

# NATIVE PLANT NURSERY

COMMUNITY CENTERED RESTORATION

MARIN COUNTY  
PARKS  
PRESERVATION · RECREATION



# GROWING PLANTS FOR LANDSCAPE RESTORATION



“Restoration is imperative for healing the earth, but reciprocity is imperative for long-lasting, successful restoration. Like other mindful practices, ecological restoration can be viewed as an act of reciprocity in which humans exercise their caregiving responsibility for the ecosystems that sustain them.”

-Dr. Robin Wall Kimmerer

HEDGEROW AT HAL BROWN PARK

A photograph of a white trillium flower in bloom, surrounded by its three large, vibrant green leaves. The plant is set against a background of forest floor debris, including brown leaves and twigs. A semi-transparent white circle is overlaid on the center of the flower, containing the text 'MCP Native Plant Nursery'.

**MCP  
Native Plant  
Nursery**

Ecological  
restoration

**MCP  
Native Plant  
Nursery**

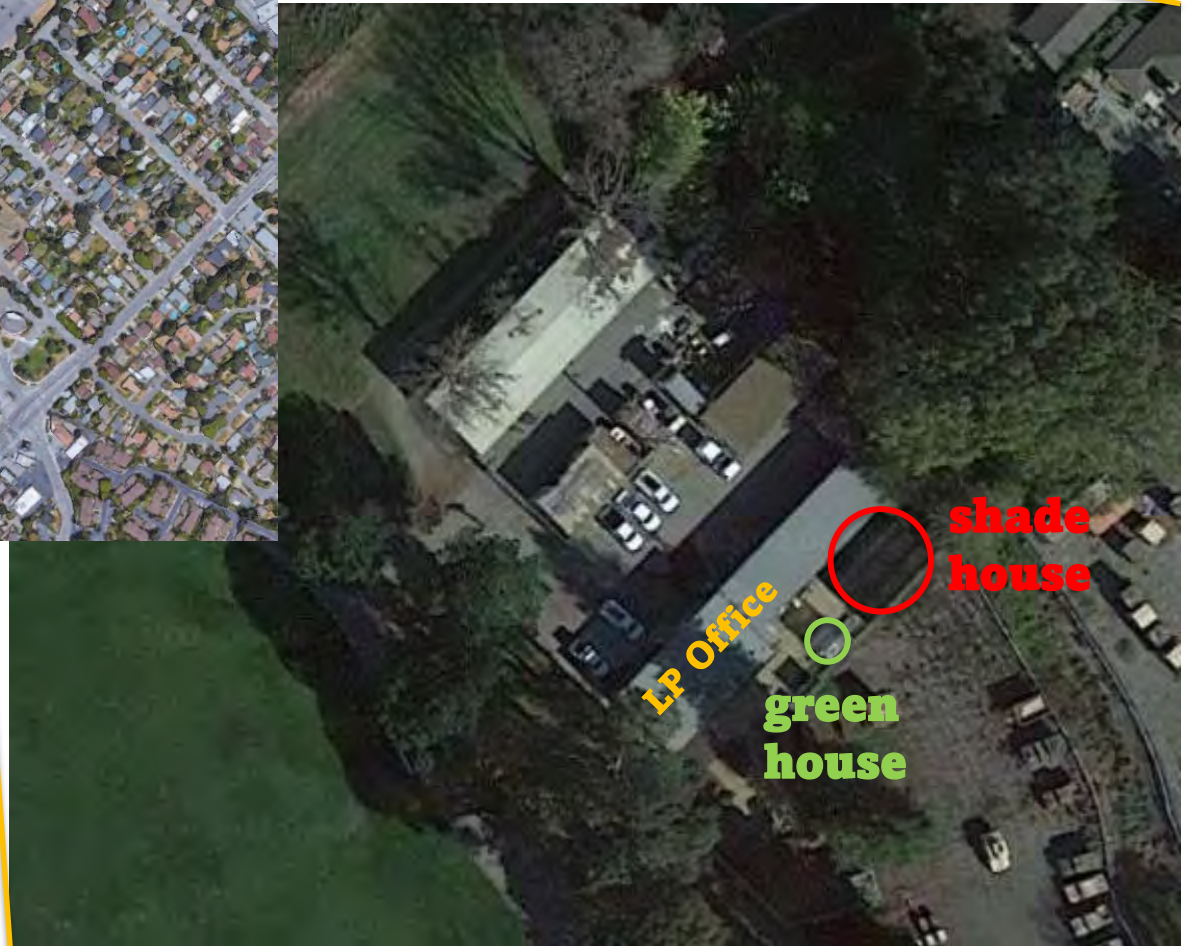
Community  
outreach &  
engagement

Aesthetic  
landscaping

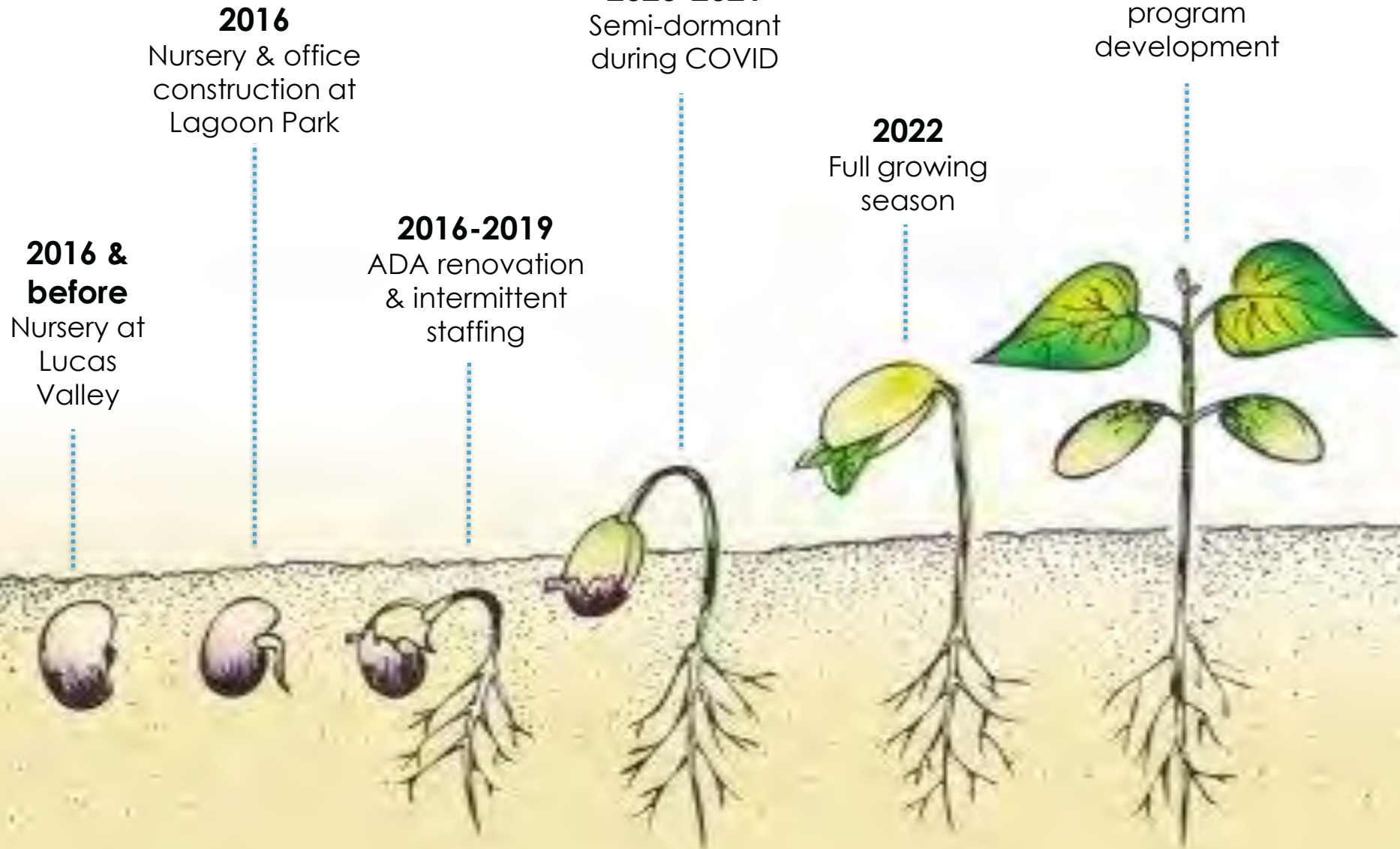
# WHERE TO FIND THE NURSERY



LAGOON PARK



# MCP NURSERY TIMELINE



# 2022 FACILITY IMPROVEMENTS



FEBRUARY 2022



EAGLE SCOUTS PROJECT



AUGUST 2022



NEW AND IMPROVED!

# 2022 FACILITY IMPROVEMENTS



SHADE SAILS & RAISED BEDS

CLEAN POT STORAGE!

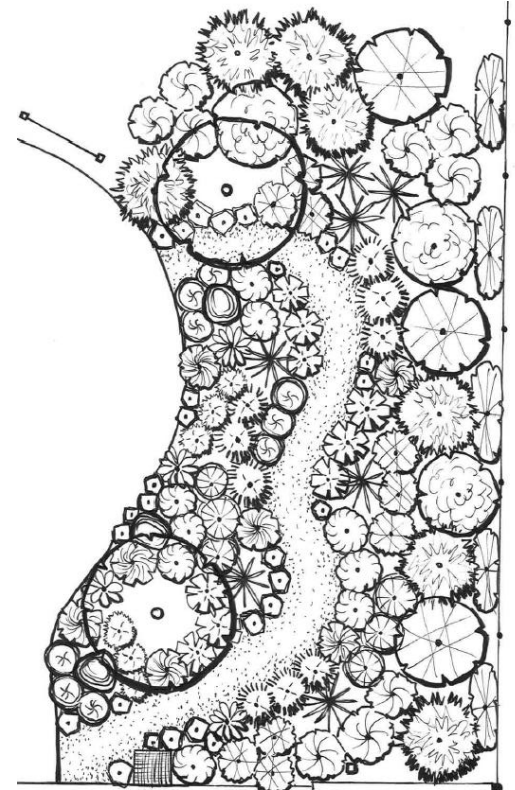




# STILL TO COME...



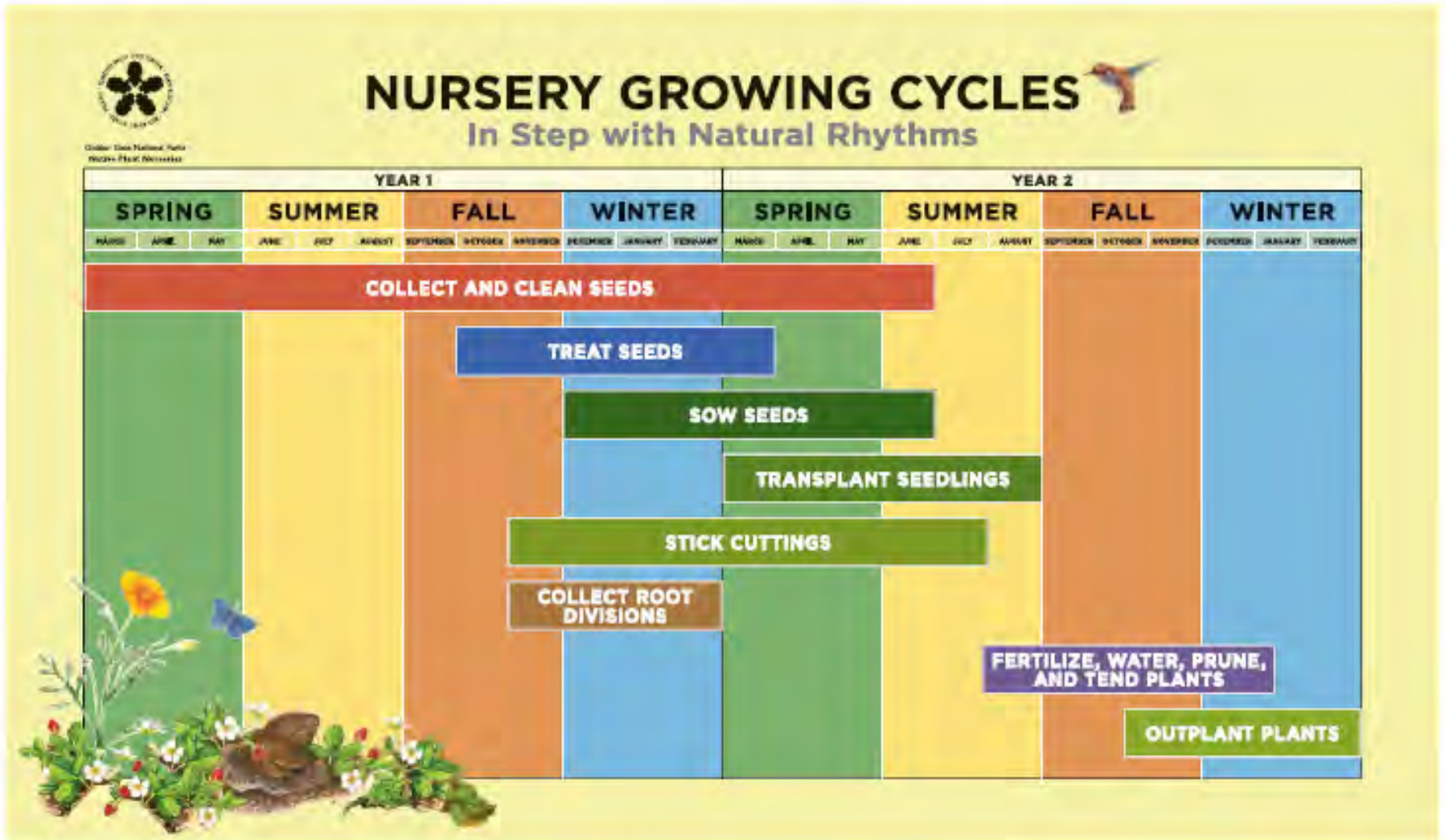
FUTURE DEMO GARDEN



LANDSCAPE DESIGN



# GROWING SEASON TIMELINE



# SEED COLLECTION AND PROCESSING



RING MOUNTAIN VOLUNTEER DAY

**MARIN COUNTY**  
**PARKS**  
PRESERVATION • RECREATION

PROCESSING TOYON BERRIES



# SEED STORAGE AND STRATIFICATION



THE SEED SHACK



RADICLES EMERGE!



# HUMBLE BEGINNINGS...

GREENHOUSE, JUNE 2022



# POTTING PLANTS FOR PROJECTS



POTTERS AT WORK



SHADE HOUSE



# OUT-PLANTING IN THE FIELD

Depends on rain!

- Usually occurs October – January

Questions moving forward:

- Irrigation & maintenance?

HAL BROWN PARK AT CREEKSIDE 2019



OLD SAINT HILARY'S 2022

# UNIQUE OPPORTUNITY FOR PUBLIC ENGAGEMENT

## Nursery assets

- Public transit, ADA accessible
- Tasks for many ability levels

## Current partnerships

- Autistry Studios
- Marin Master Gardeners

## Possible future partnerships

- Venetia Valley School
- Indigenous Healing Center
- California Native Plant Society



INSIDE POTTING ON RAINY DAY



# VOLUNTEER PROGRAM DEVELOPMENT 2022



LINC YOUTH LEADERSHIP POTTING MADRONE

**Since mid-April this year...**

- 24 volunteer events
- 400 person hours
- 50+ volunteers
- ~10,000 pots washed
- ~6,000 plants potted
- ~2,000 plants pruned

**And more still to come!**

*thank you*

# PHYTOSANITARY CONSIDERATIONS

- Do no harm!
- Mitigate risk of spreading *Phytophthora ramorum* & other spp



- Steam soil →
- Clean shoes & tools
- Off the ground!



# GROWING FOR PROJECTS



COLLECTING TULE SEED AT STAFFORD LAKE

## Grow Year 2022

- Frog Pond at Mount Burdell
- Mount Burdell grasslands
- Ring Mtn & Old Saint Hilary's
- Stafford Lake Park
- Hal Brown Park at Creekside
- Pacheco Valle milkweed
- Parks landscaping



## Looking to the future...

- Roy's Redwoods restoration
- Pacheco Pond trail closure
- Parks landscaping projects
- Bolinas Wye wetlands?
- Cascade Canyon bridges?
- Civic Center landscape?

**And...**

**The sky's the limit!**



THANK YOU  
+  
QUESTIONS?

