

**MARIN COUNTY**  
**PARKS**  
PRESERVATION • RECREATION

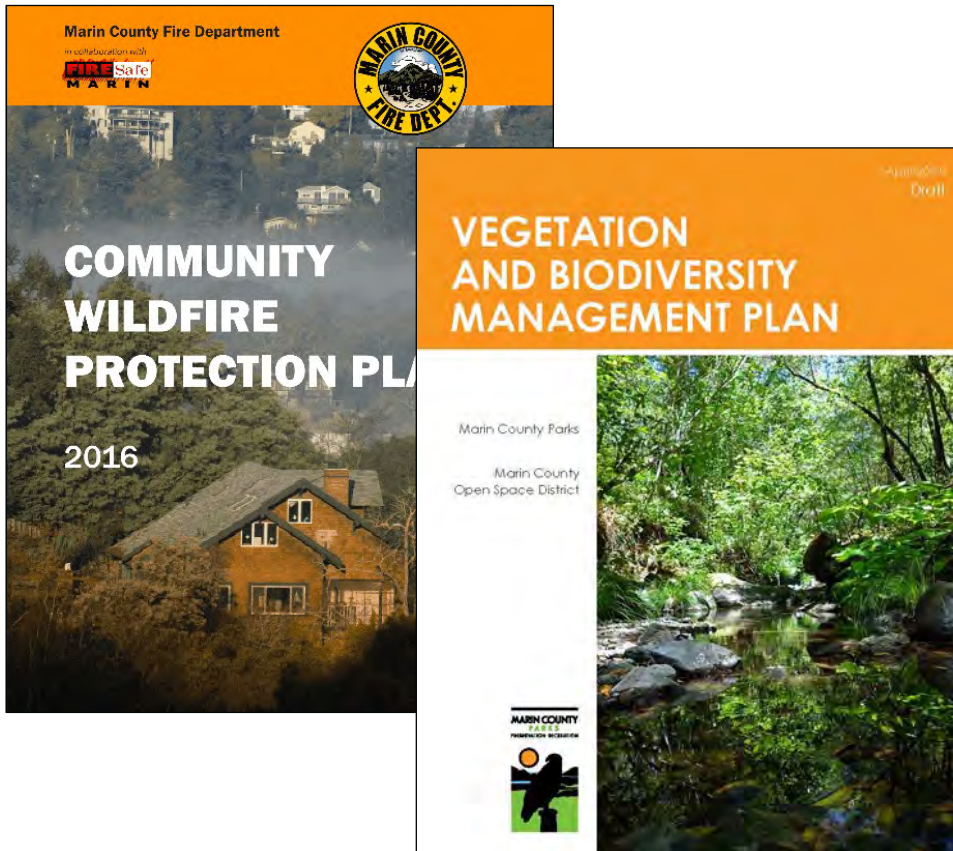


CARING FOR WHAT WE HAVE  
• 2012-2021 •

# Reducing Wildfire Risk in Marin

MAY 3, 2018

# GUIDANCE AND COORDINATION



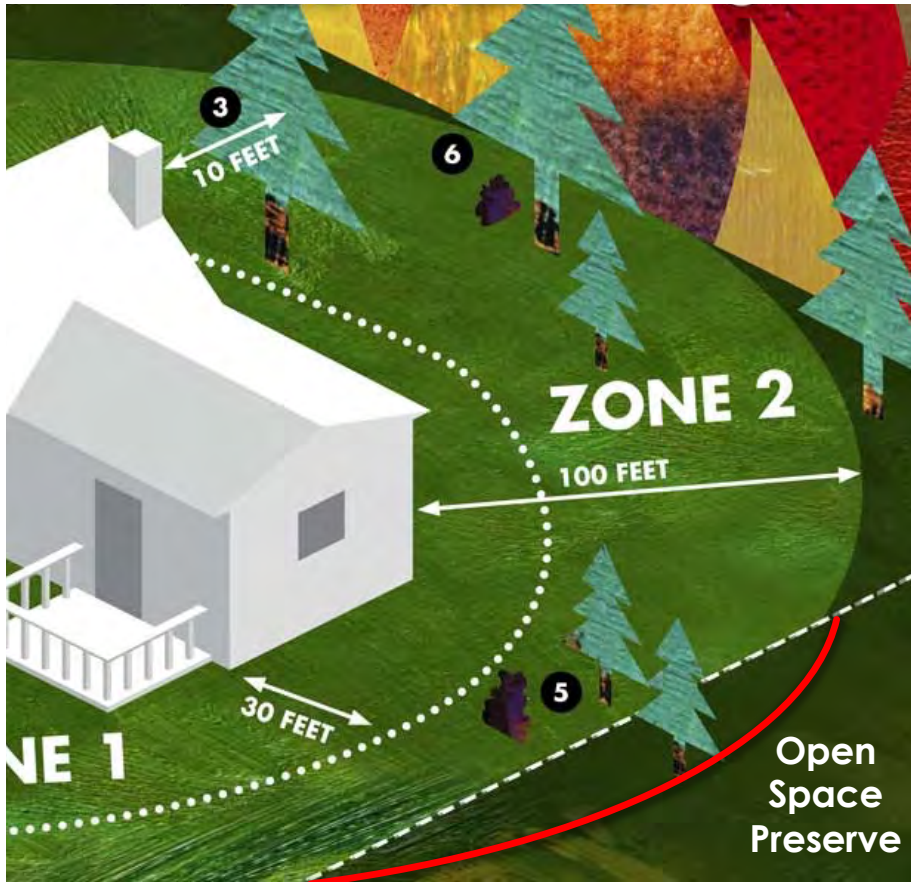
- Collaboration on priorities
- Coordination through FIRESafe MARIN
  - Grants, education, planning
- Strategic fuel reduction
- Actions with multiple benefits
  - Native habitat restoration
  - Invasive species control

# FUEL REDUCTION

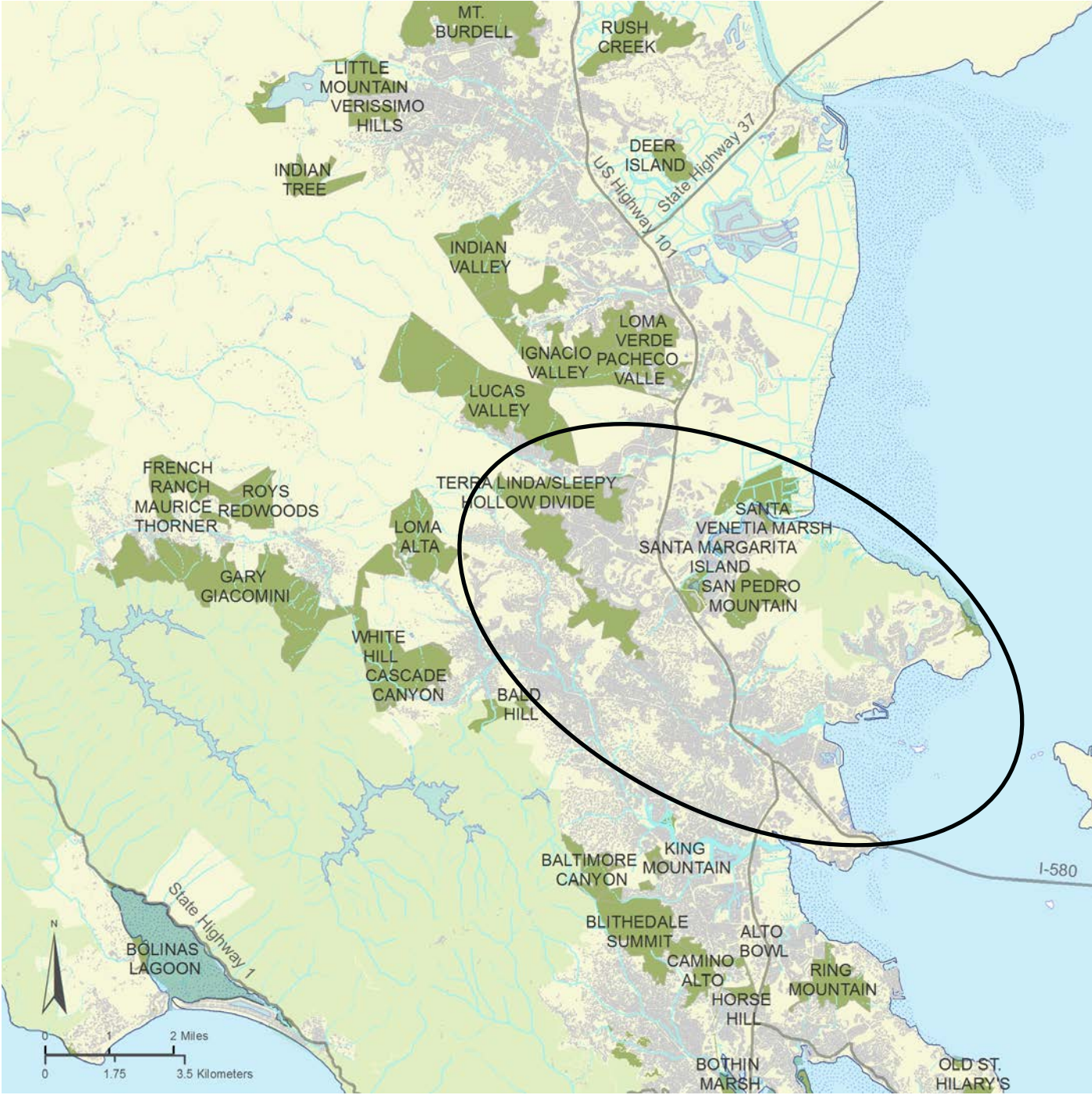


- **Defensible space** – around neighboring homes
- **Fuelbreaks** – strategic fuel reduction
- **Emergency access** – fire road clearance
- **Ignition prevention** – roadsides, powerlines
- **Fuel reduction projects** – thinning, grazing

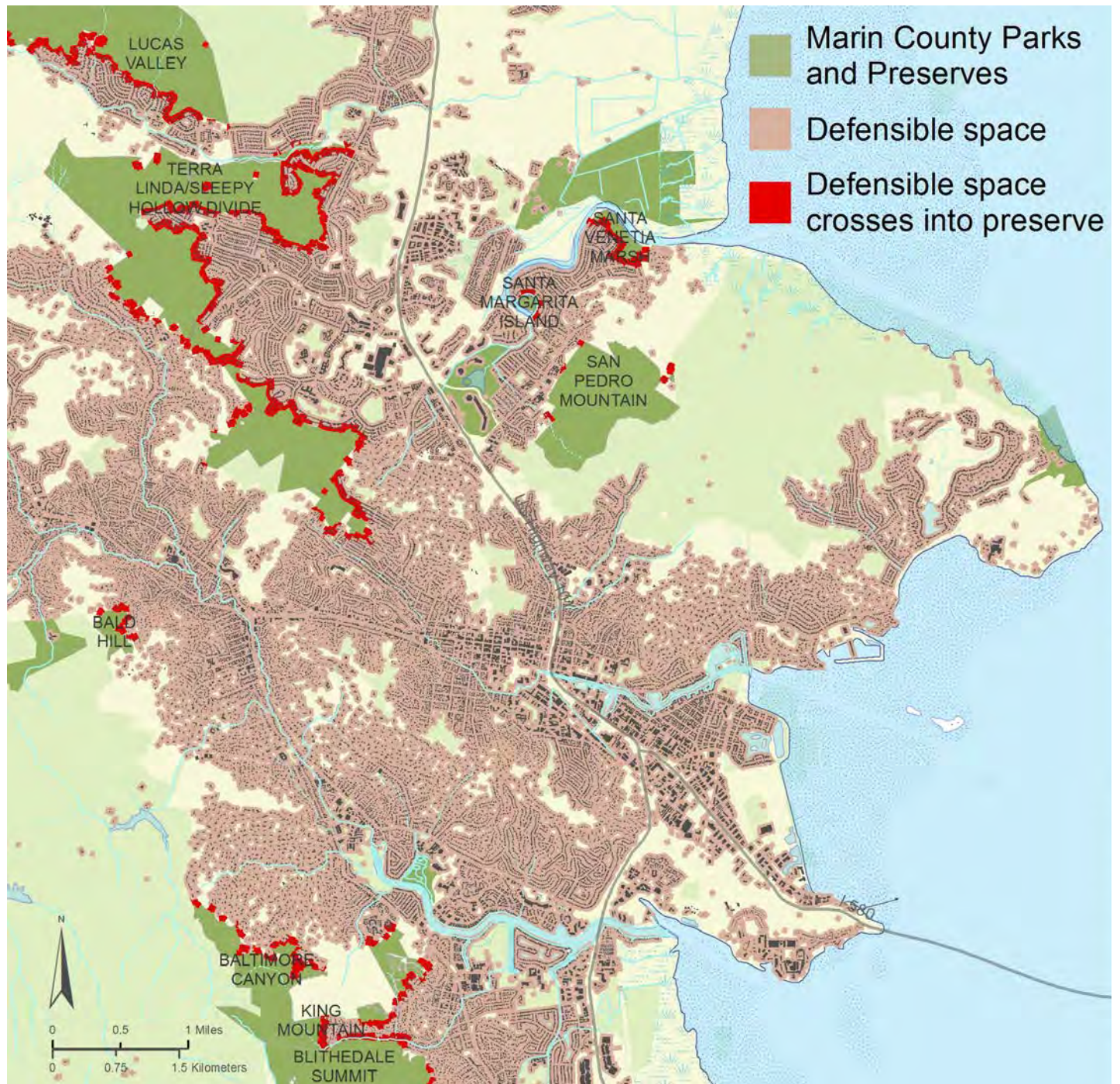
## DEFENSIBLE SPACE



- 53 acres of mowing
- 145 acres Wide Area Fuelbreaks near homes
- Defensible space permit program
  - Site visits and consultations
  - Support CAL FIRE recommended actions
  - Neighbors can maintain their full defensible space



**MARIN COUNTY**  
**PARKS**  
 PRESERVATION • RECREATION



# DEFENSIBLE SPACE



**MARIN COUNTY**  
PARKS & RECREATION  
OPEN SPACE DISTRICT



**MARIN COUNTY**  
FIRE DEPT.

FIRST CLASS MAIL  
US POSTAGE  
**PAID**  
COUNTY OF MARIN

3501 Civic Center Drive  
Suite 290  
San Rafael, CA 94903

## Open Space Neighbor

### 1234 Oak Lane

### San Rafael, CA 94903



## GET READY FOR WILDFIRE



**HARDEN YOUR HOME**

Flying embers can destroy homes up to a mile ahead of a wildfire. Prepare by making your house fire resistant.



**CREATE DEFENSIBLE SPACE**

California law requires homeowners to create a "Defensible Space Zone" around their homes.

Read on to learn more about creating defensible space next to a Marin County Open Space District preserve. For more information about how to protect your home from fire, visit [firesafemarin.org](http://firesafemarin.org)

## PROTECTING YOUR HOME FROM WILDFIRE



WILDFIRE IS COMING. ARE YOU READY?

LUCAS/ISTOCK.COM/ALAMY

**Does your home border a Marin County open space preserve?**

Throughout the year, Marin County open space, Marin County Fire Departments, and local fire agencies reduce the build-up of fire fuels in the county's preserves. It is necessary to mow grass in a preserve to obtain the 100 feet of defensible space around your home, please proceed with caution according to the guidelines below.

- **Determine if you need a permit.** No permit is needed to mow grass or other annual plants within 100 feet of your home on most preserves (and, however, Ring Mountain and Old Saint Hilary's preserves do require a permit to protect endangered plants found there). A permit is also needed to remove woody vegetation like bushes or trees. Request a permit from the Vegetation and Fire Ecologist at (415) 473-5089.
- **Confirm that the property where you want to work is owned by Marin County.** Check with the Marin County Assessor/Recorder/County Clerk's Office to determine the location of your property line. Call (415) 473-7215 or visit [marincounty.org](http://marincounty.org).
- **Determine your defensible space zone.** Measure 100 feet out from your home, not your property boundary.
- **Never mow or cut during hot and dry weather.** Mow early in the evening when temperatures are cooler than foggy days.
- **Protect wildlife.** Before mowing, walk through the area encouraging wildlife to leave. If you find a bird nest, wait until it is no longer being used before mowing this area.
- **Use caution.** Don't start a fire. Hot tools or metal blades striking rocks can start fires. Keep a fire extinguisher and/or hose at the work site.
- **Mow only grass and other annual plants.** Removing woody vegetation like bushes and trees requires a permit (see above).

The majority of property owners adjacent to Marin County open space preserves can obtain enough defensible space on their own property, but property owners can mow grass and other annual plants in the preserves if necessary to obtain the 100-foot of defensible space around homes. See the sidebar for more details.

marincountyparks.org

Alternative formats are available upon request.  
The MCCOE is a special district pursuant to the California Public Resources Code, Marin County Parks, necessary for the management of the county park system and provides public information on behalf of the MCCOE.



**DEFENSIBLE SPACE: BEFORE FIRE**



# DEFENSIBLE SPACE: AFTER FIRE



# FUEL BREAKS



# FUEL BREAKS

reduced fuel zone



# PG&E GASLINE CLEARANCE: BEFORE



# PG&E GASLINE CLEARANCE: AFTER



**PG&E GASLINE CLEARANCE: BEFORE**



**PG&E GASLINE CLEARANCE: AFTER**



**FUEL REDUCTION: THINNING (BEFORE)**





# FUEL REDUCTION: THINNING (AFTER)



# FUEL REDUCTION: CHIPPING



# FUEL REDUCTION: BURN PILES



# FUEL REDUCTION: GRAZING



# FUEL REDUCTION: GRAZING



## REDUCING WILDFIRE RISK IN MARIN



- **1,816 acres** managed annually for fire hazard reduction
  - **53 acres** ignition prevention and defensible space mowing
  - **249 acres** emergency access mowing & pruning
  - **23 acres** fuelbreaks maintained
  - **1,346 acres** grazed
  - **145 acres** thinned since 2003
- In partnership with county and local fire departments

**MARIN COUNTY**  
**PARKS**  
PRESERVATION • RECREATION



CARING FOR WHAT WE HAVE  
• 2012-2021 •

# THANK YOU

Main Office  
3501 Civic Center Drive, Suite 260  
San Rafael, CA 94903

Website: [marincountyparks.org](http://marincountyparks.org)

Phone: (415) 473-6387



@marincountyparks



@marincountyparks



@marincountyparks



[youtube.com/marinparks](https://youtube.com/marinparks)