



Vegetation Management Work

MARCH 17, 2022



VISION STATEMENT



Strategically apply Marin County Open Space District resources to reduce wildfire risk on county lands, especially in the wildland/urban interface where open space preserves border homes and neighborhoods.

FROM VISION TO ACTION



ONGOING MANAGEMENT

In 2022, Parks vegetation management staff will monitor and oversee vegetation management in 412 targeted areas across 60 parks, preserves, and other county-owned properties.

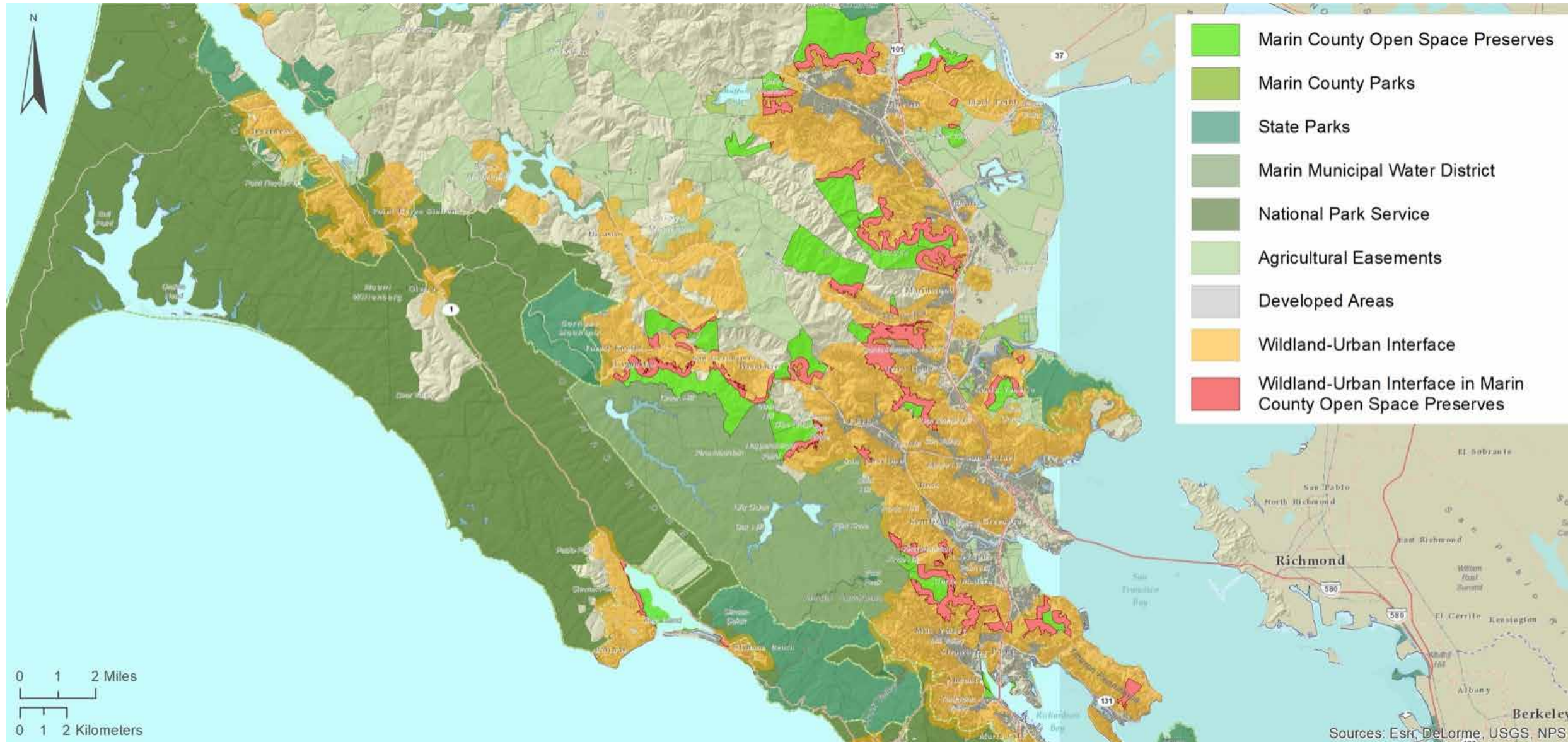


PARTNERSHIP PROJECTS

Parks staff is continually engaged in identifying project opportunities with local fire agencies, including the recently funded Marin Wildfire Prevention Authority (MWPA).

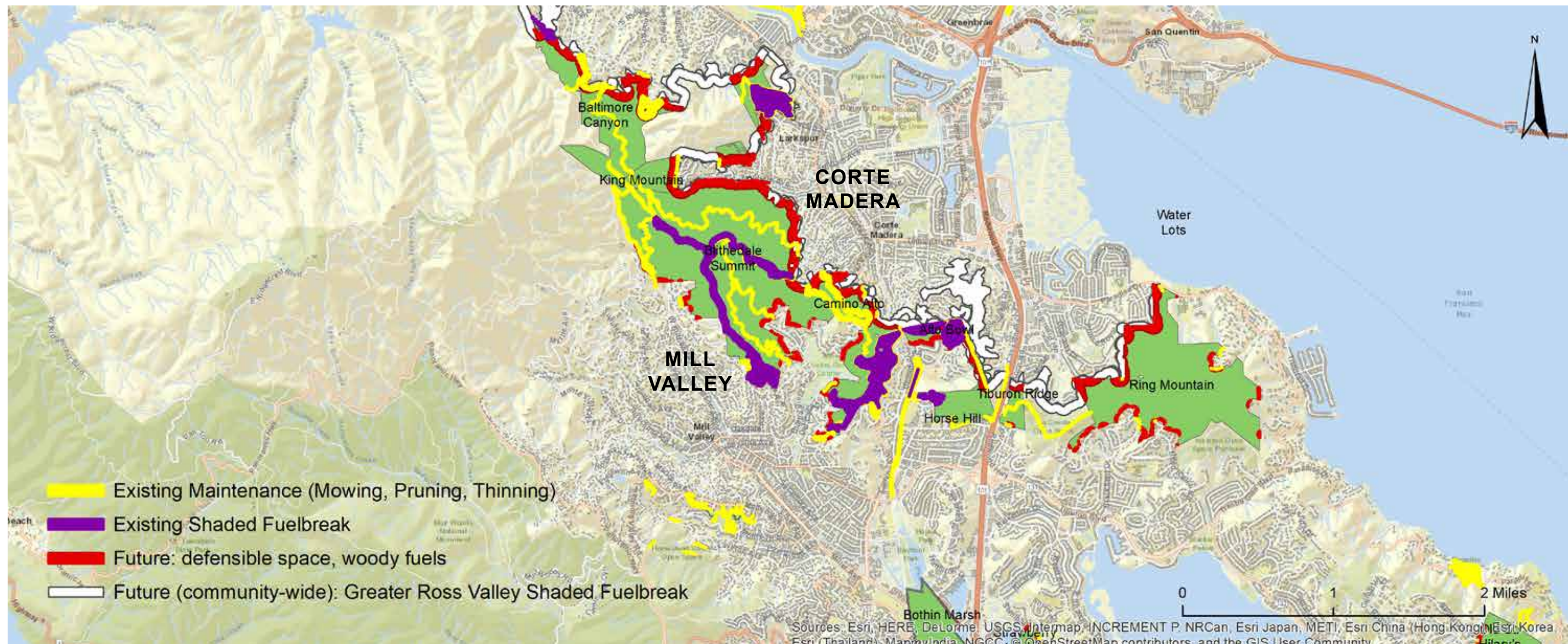
COUNTY-WIDE MAP

10% of wildland/urban interface, where homes border public lands, falls within MCOSD preserves.



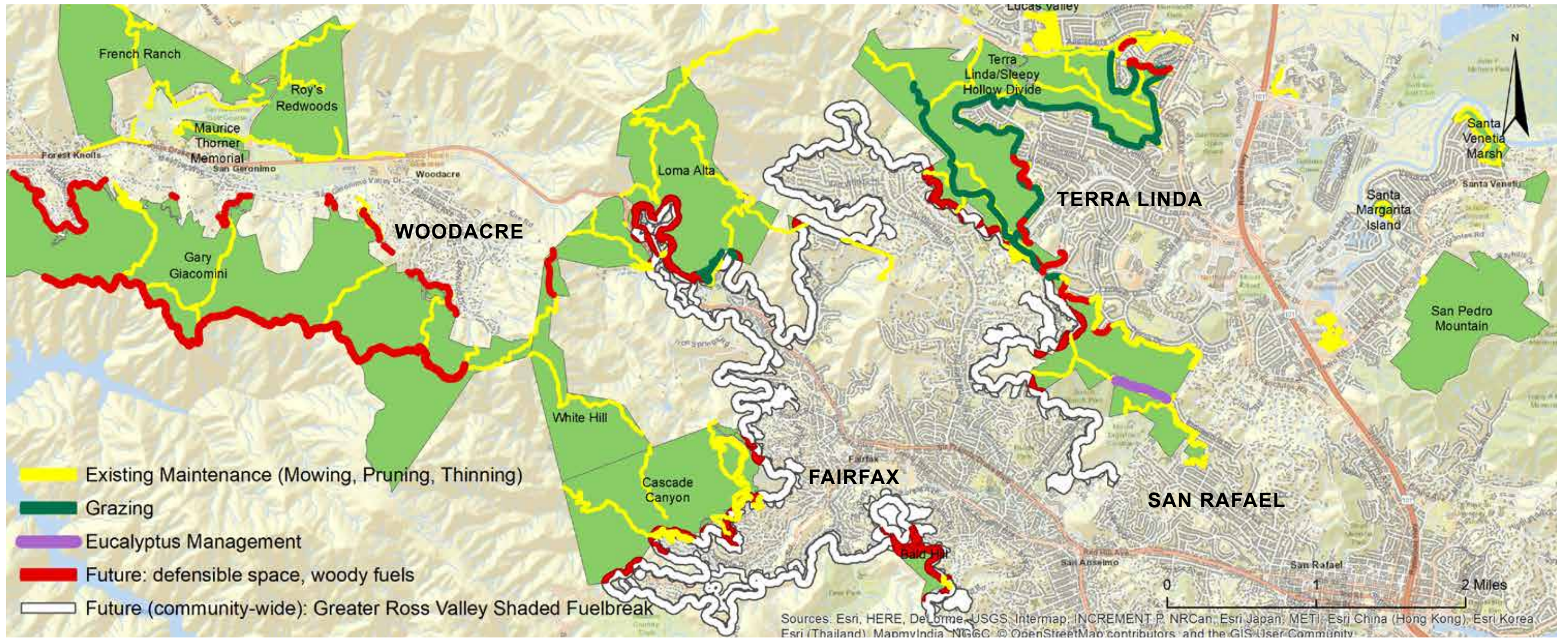
SOUTH MARIN MAP

Parks staff identify targeted areas in County preserves and deploy appropriate capabilities based on what is most effective.



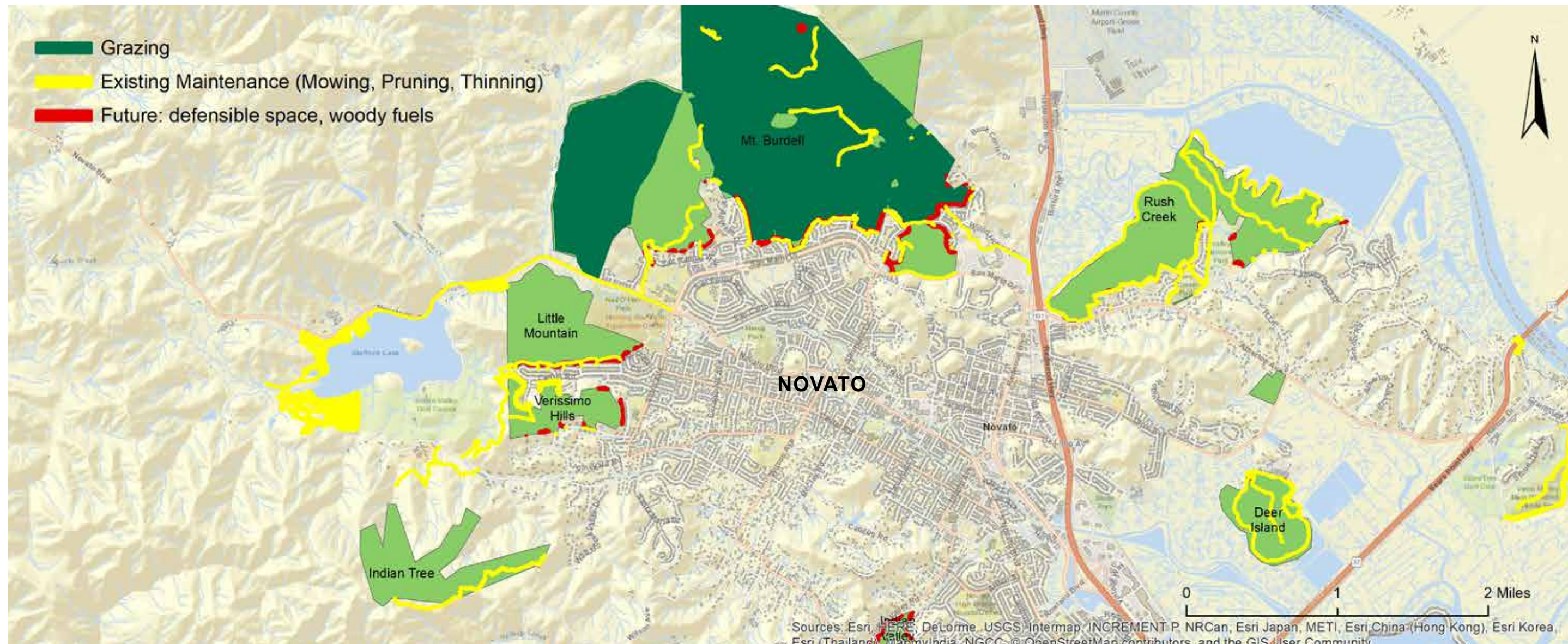
CENTRAL MARIN MAP

Parks staff identify targeted areas in County preserves and deploy appropriate capabilities based on what is most effective.



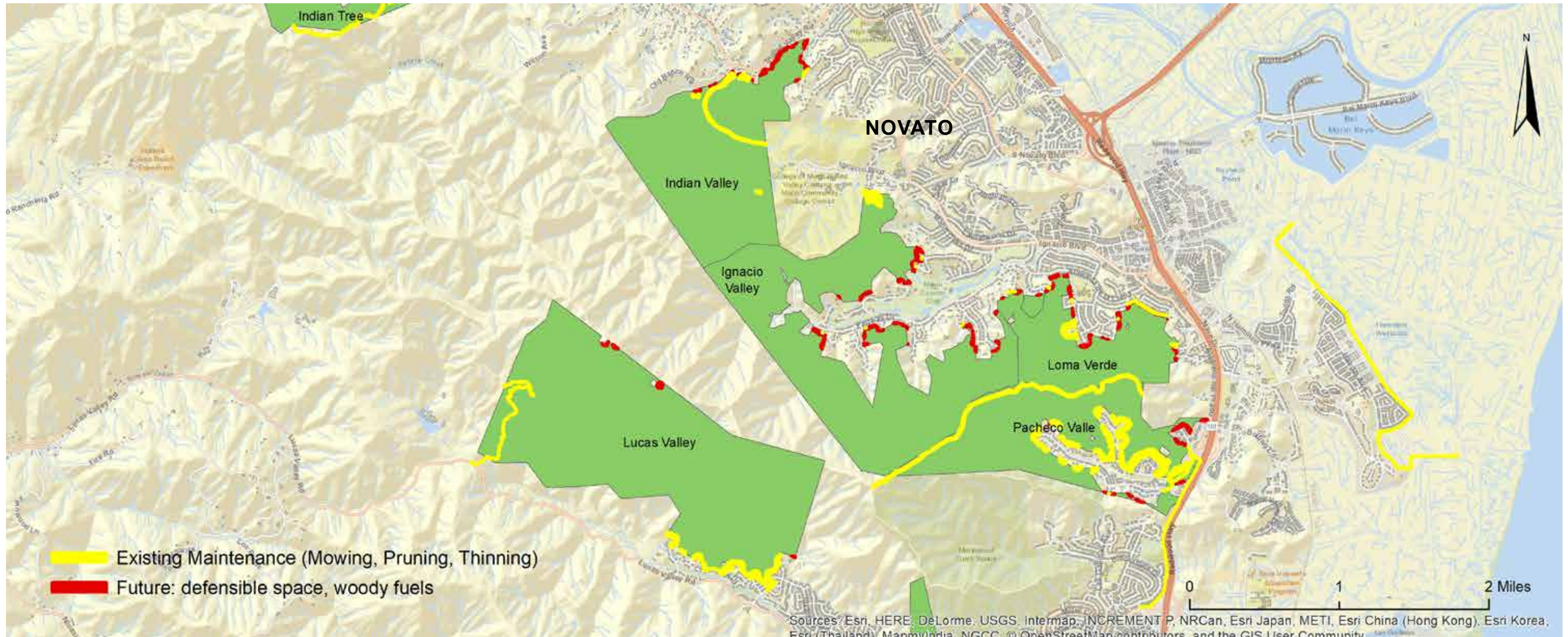
NORTH MARIN MAP

Parks staff identify targeted areas in County preserves and deploy appropriate capabilities based on what is most effective.

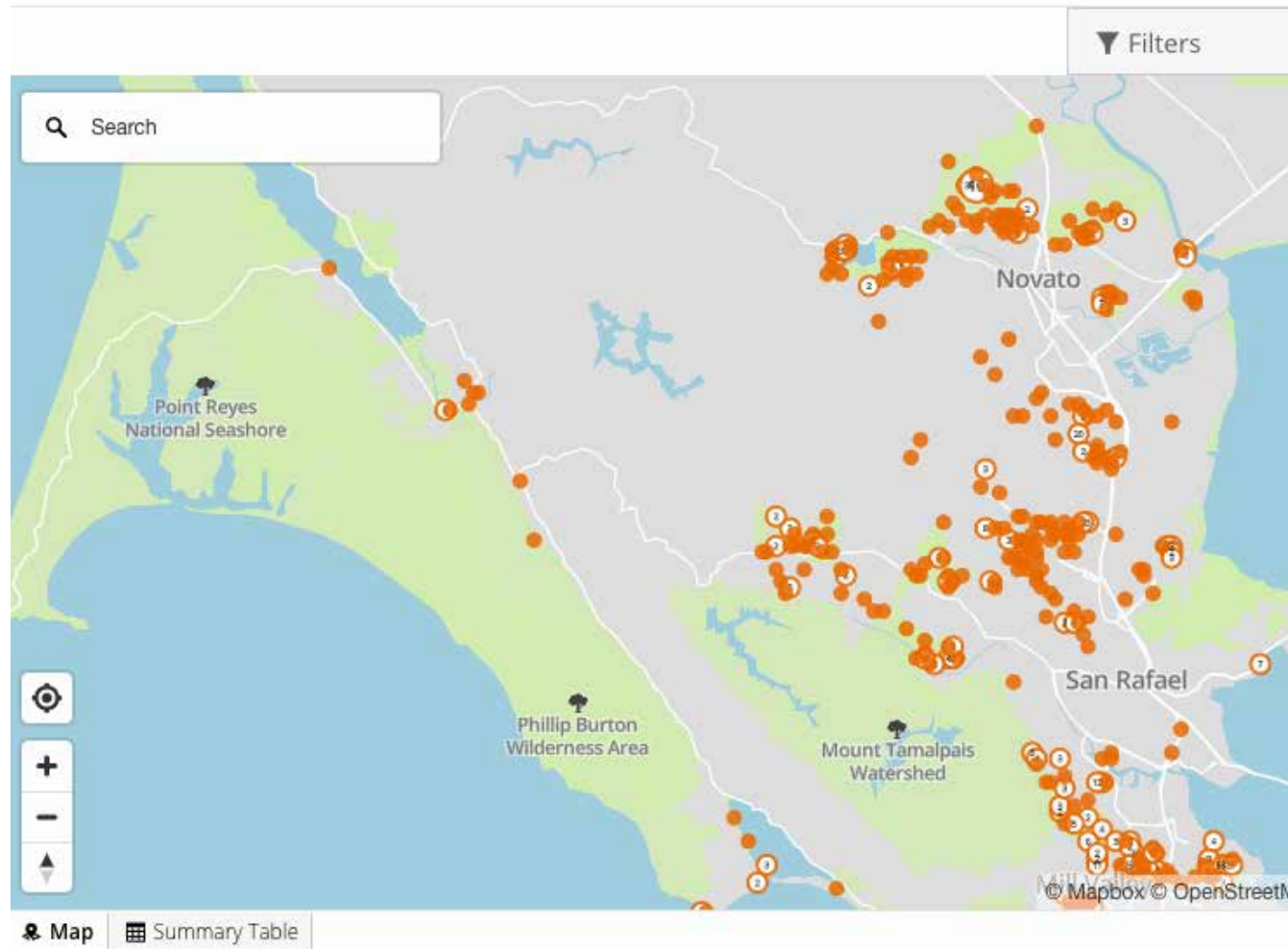


MARIN BIG ROCK AREA MAP

Parks staff identify targeted areas in County preserves and deploy appropriate capabilities based on what is most effective.



OPEN DATA



- **Vegetation management project information is publicly available** on the County’s Open Data portal. Go to data.marincounty.org and search for “Open Space Vegetation Management”.
- The interactive online map visualizes vegetation management project work, which can be **filtered by year, location, capability, and more**.
- Source data for vegetation management work from 2006 to 2022 is **available for download in spreadsheet format**.

VEGETATION MANAGEMENT WORK

CAPABILITIES

In recent years, Parks has significantly expanded its array of capabilities.



**OPEN SPACE
MAINTENANCE CREW**



**FIRE AGENCY
CREWS**



**CONSERVATION CORPS
NORTH BAY**

CAPABILITIES

Research collected year-over-year allows Parks to optimize how it applies vegetation management methods and capabilities.



**CONTRACTED
GRAZING**



**CONTRACTED
SERVICES**



**EARLY DETECTION,
RAPID RESPONSE**

VEGETATION MANAGEMENT WORK PROCESS

