



## Memorial Trail Improvement Project

Terra Linda / Sleepy Hollow Open Space Preserve

Initial Study / Mitigated Negative Declaration Response to Comments

Marin County Open Space District Board of Directors Meeting of November 08, 2022

The Draft Initial Study/Mitigated Negative Declaration (IS/MND) for the Memorial Trail Improvement Project (proposed project) at Terra Linda/Sleepy Hollow Open Space Preserve was available for a 30-day public review and comment period June 13 – July 15, 2022. The Notice of Intent to Adopt a Mitigated Negative Declaration (NOI) was posted at the Marin County Clerk's Office and published on the Office of Planning and Research State Clearinghouse CEQANet on June 13, 2022,<sup>1</sup> and the NOI for the proposed project was emailed and/or mailed to 274 neighborhood residents, stakeholders, responsible agencies, decision-makers, and individuals who previously expressed interest in receiving such notification. The NOI was published in the legal section of the Marin Independent Journal on June 13, 2022. The NOI was posted at the existing public trailheads at the project area and was posted on the Marin County Open Space District's (MCOSD) website. During the planning phase for the proposed project, the MCOSD hosted an on-line public meeting on October 7, 2020. Public comments were received through an online comment submission format and email.

The MCOSD received comments from 80 individuals and one regulatory agency during the public review and comment period. This Response to Comments documents includes responses to comments received from the California Department of Fish and Wildlife and five Master Responses to comments of a similar theme. A list of the commentators and a reference to the Master Response is provided at end of the Responses to Comments, followed by the comments received and related correspondence. If assistance is needed in reading the comments received, please contact Jason Hoorn at [jhoorn@marincounty.org](mailto:jhoorn@marincounty.org).

None of the comments received or responses resulted in changes to the IS/MND.

### CDFW Comments

#### Comment Summary 1 Summary: Northern Spotted Owl

The IS/MND concludes that northern spotted owl (NSO) is unlikely to utilize the project area due to habitat composition, proximity to development, and levels of public use however, the project area and a 0.25-mile radius appears to consist of potentially suitable nesting habitat for NSO, including coast live oak (*Quercus agrifolia*) forest and California bay (*Umbellularia californica* var. *californica*) forest, therefore nesting NSO may occur within the project area or a 0.25-mile radius and be disturbed. There are California Natural Diversity Database (CNDDB) documented NSO occurrences approximately 1.8 miles south of the project area and 2.5 miles to the east, which are well within the dispersal distance of NSO and in close proximity to development and areas of public use.

Given the potential for NSO to occur within the project area and 0.25-mile radius, Mitigation Measure (MM) BIO-1 would likely be insufficient to detect NSO presence. Additionally, the appropriate buffer distance for NSO is 0.25 mile (1,320 feet), as noted on page 51 of the MND, and therefore 100 feet, as proposed in Best Management Practice (BMP) Special-Status Wildlife-4: Avoidance and Protection of Northern Spotted Owl would be insufficient to avoid potential impacts to nesting NSO if they are present. If active NSO nests are not detected by the proposed surveys in MM BIO-1, nesting NSO could be disturbed by project activities resulting in nest abandonment and loss of eggs or reduced health and vigor and loss of young, thereby substantially reducing the number of the species. NSO is CESA listed as a threatened species and therefore is considered to be a threatened species pursuant to CEQA Guidelines section 15380. Therefore, if an active NSO nest is disturbed by the Project, the Project may result in a substantial reduction in the number of a threatened species, which is considered to be a Mandatory Finding of Significance pursuant to CEQA Guidelines section 15065, subdivision (a)(1).

For an adequate environmental setting and to reduce impacts to NSO to less than significant, CDFW recommends that the MND include the following mitigation measure for NSO.

---

<sup>1</sup> State Clearinghouse (SCH) Number 2022060238

*MM BIO-2:* A qualified biologist shall provide an assessment of potential NSO nesting habitat within the Project area and a 0.25-mile radius and obtain CDFW's written acceptance of the assessment. Alternatively, if the assessment is not completed, or if it concludes that NSO nesting habitat is present, then no Project activities within 0.25 miles of potential NSO nesting habitat shall occur between March 15 and August 31 unless a qualified biologist approved in writing by CDFW conducts NSO surveys following the U.S. Fish and Wildlife Service (USFWS) *Protocol for Surveying Proposed Management Activities That May Impact Northern Spotted Owls*, dated (revised) January 9, 2012. Surveys shall be conducted in accordance with Section 9 of the survey protocol, *Surveys for Disturbance-Only Projects*. If breeding NSO are detected during surveys, a 0.25 mile no-disturbance buffer zone shall be implemented around the nest until the end of the breeding season, or a qualified biologist determines that the nest is no longer active, unless otherwise approved in writing by CDFW. The Project shall obtain CDFW's written acceptance of the qualified biologist and survey report prior to Project construction occurring between March 15 and August 31 each year.

Alternate buffer zones may be proposed to CDFW after conducting an auditory and visual disturbance analysis following the USFWS guidance, *Estimating the Effects of Auditory and Visual Disturbance to Northern Spotted Owls and Marbled Murrelets in Northwestern California*, dated October 1, 2020. Alternative buffers must be approved in writing by CDFW. If take of NSO cannot be avoided, the Project shall consult with CDFW pursuant to CESA and obtain an ITP, and also consult with USFWS pursuant to the federal Endangered Species Act.

CDFW considers the breeding season of NSO to be until August 31, not July 31, as young are still dependent on their parents and do not begin to disperse until September. Therefore, the project should consider the potential for impacts to NSO through August 31.

Would the Project have a substantial adverse effect, either directly or through habitat modifications, on any species identified as a candidate, sensitive, or special status species in local or regional plans, policies, or regulations, or by CDFW or USFWS?

### **Response**

The Marin County Open Space District recognizes that if preconstruction surveys do not detect a northern spotted owl nest that potential impacts from project implementation could occur. Potential impacts to northern spotted owl are not expected to result from implementation of the proposed project for a few primary reasons. The closest known northern spotted owl nest site to the project area is 1.5 miles away at a parcel of land owned by the City of San Rafael. The patchy forested areas within and surrounding the project area do not have a dense canopy, and the understory vegetation ranges from open to scrubby, and does not appear to be potential nesting habitat.

Point Blue Conservation Science previously surveyed the northern half of the preserve and did not find any NSO nests. A Point Blue Conservation Science Senior Avian Ecologist surveyed the project area on August 29, 2022 to ground-truth the habitat. This avian ecologist conducts United States Fish and Wildlife Service protocol-level surveys for northern spotted owls. The surveyed area included a 0.25-mile buffer around the project area. The survey found the vegetation consisted of smaller bays, with some oaks and scrub with grassy areas between the drainages, and the understory in the forested areas was not very open and therefore not suitable for northern spotted owl hunting. The conclusion is that the project area is not suitable for northern spotted owl nesting or hunting. No northern spotted owl nests were found. This survey supports the conclusions in the IS/MND and satisfies the survey included in the mitigation measure recommended in the comment. The Marin County Open Space District will provide information regarding the August 29, 2022 survey to the CDFW.

A Biological Resources Assessment for the project area was completed by Prunuske Chatham, Inc. (PCI), in August 2019. PCI conducted botanical and wildlife surveys of the study area in spring 2019. The field surveys were conducted by PCI's senior wildlife biologist and vegetation ecologist. The primary purposes of the Biological Resources Assessment were to characterize biological communities and habitat conditions, to determine whether or not suitable habitat for special-status species is present, and to identify potential biological constraints. The potential for presence of special-status plants and wildlife and habitats was determined based on habitat conditions, presence or absence of unique habitat features, proximity of the Study Area to reported occurrences, and geographic ranges of relevant species. The surveys consisted of evaluating corridors along trails in the southeastern portion of the Preserve between Ridgewood Fire Road and Devon Drive including Memorial Trail and habitats in the interior of the Preserve. Habitats beyond these boundaries were not evaluated. The Biological Resources Assessment evaluated data collected and maintained by the Marin County Open Space

District, a review of the California Natural Diversity Database (CNDDDB), and other sources. PCI documented the presence of two special-status birds, oak titmice (*Baeolophus inornatus*) and Nuttall's woodpecker (*Picoides nuttalli*), within the Study Area. Additional special-status bird species and bat species have been documented within Terra Linda / Sleepy Hollow Open Space Preserve but were not found during PCI's field surveys. The study area provides suitable habitat for these species and therefore there is potential for the species to exist within the project area even though PCI did not document presence. These include Cooper's hawk (*Accipiter cooperi*), Sharp-shinned hawk (*Accipiter striatus*), Grasshopper sparrow (*Ammodramus savannarum*), Golden eagle (*Aquila chrysaetos*), Burrowing owl (*Athena cunicularia*), Northern harrier (*Circus hudsonius*), White-tailed kite (*Elanus leucurus*), Pallid bat (*Antrozous pallidus*), Townsend's big-eared bat (*Corynorhinus townsendii*), and Hoary bat (*Lasiurus cinereus*).

Implementation of the proposed project would include ground-disturbing activities associated with trail decommissioning utilizing active methods and implementation of trail improvements however, this minimal disturbance would not result in habitat modifications that could cause potential impacts to special-status species that have the potential to occur within the project area. Implementation of the proposed project would remove one trunk of a multi-trunk California bay tree. The trunk to be removed is 8-inch diameter at breast height (DBH). This tree is located in the California Bay – Coast Live Oak plant community and is not associated with a stream crossing.

Implementation of Mitigation Measure BIO-1, along with implementation of applicable RTMP BMPs, would reduce potential impacts on special-status and nesting birds to a less than significant level. Mitigation Measure BIO-1, in conjunction with the August 29, 2022 survey completed by Point Blue Conservation Science, satisfies the recommendations included in the mitigation measure included in the comment. Point Blue Conservation Science's Senior Avian Ecologist conducts United States Fish and Wildlife Service protocol-level surveys for northern spotted owls and concluded the project area does not include suitable habitat for northern spotted owls.

Surveys conducted in accordance with Section 9 of the survey protocol, *Surveys for Disturbance-Only Projects*, is required for areas with suitable habitat. The project area does not support suitable NSO habitat, therefore the additional surveys required for Section 9 are not applicable for the proposed project. The Marin County Open Space District will commit to conducting nesting surveys through August 31<sup>st</sup> instead of July 31<sup>st</sup>, per CDFW's recommendation for birds other than northern spotted owl. For northern spotted owl, the following additional guidelines were developed between the Marin County Open Space District, the United States Fish and Wildlife Service, and Point Blue Conservation Science and apply to projects that involve disturbance only with no habitat modification, and would apply to the proposed project:

- No Effect: Action occurs August 1 through January 31
- Not Likely to Adversely Affect: Action occurs July 10 through July 31
- Likely to adversely affect: Action occurs March 1 through August 31

From 1992 to 2004, the United States Fish and Wildlife Service recommended that projects involving disturbance with no habitat modification should not take place between March 1 and August 31. In 2004, these dates were modified to February 1 through July 9. February 1 was selected based on data from coastal California sites showing earlier nesting behavior. The United States Fish and Wildlife Service agreed that the Marin County Open Space District could maintain a March 1 start date. July 9 was selected based on early fledging of young. This date gave fledgling northern spotted owls two-to-four weeks to acclimate to their surroundings. Point Blue Conservation Science recommends the more conservative approach of four weeks post-fledging based on site-specific data. The following documents will be provided to CDFW which provide details regarding the Marin County Open Space District's protocols:

- 2010 SF Bay Area NSO monitoring protocol
- 2008 guidance for NSO nesting season
- 2017 Marin County Parks bird nesting survey protocol, which were accepted by CDFW in 2019

The Marin County Open Space District has been utilizing the United States Fish and Wildlife guidance regarding NSO breeding season, which is February 1 - July 31. The Marin County Open Space District does not expect implementation of the proposed project would affect NSO because there is a lack of suitable habitat and no NSO nests have been located within the project area or the preserve.

The Marin County Open Space District will provide preconstruction surveys to CDFW for written acceptance prior to construction occurring between March 15 and August 31 each year of project implementation.

As documented in the IS/MND, implementation of the proposed project including implementation of the applicable RTMP BMPs and Mitigation Measure BIO-1, would not result in substantial adverse effects, either directly or through habitat modifications, on any species identified as a candidate, sensitive, or special status species in local or regional plans, policies, or regulations, or by CDFW or the United States Fish and Wildlife Service.

## **Comment Summary 2: Burrowing Owl**

The MND identifies that western burrowing owl (*Athene cunicularia*) has been documented within the larger Terra Linda/Sleepy Hollow Open Space Preserve, the project area provides suitable habitat for burrowing owl, and there is the potential for burrowing owl to occur there. The project area is within the wintering range of burrowing owl. CDFW appreciates that surveys have been done within the preserve; however, it is unclear if any of the survey locations were within the project area and a sufficient buffer zone to detect wintering owls that may be disturbed. Furthermore, it appears the last time surveys were conducted was March 2018, which may not accurately reflect current conditions and occupancy.

If wintering burrowing owls are not detected by the appropriate surveys, the project may result in reduced health and vigor, or mortality, of owls resulting from removal of wintering burrows, or wintering burrow abandonment caused by audio and visual disturbances from Project construction activities. Burrowing owl is protected under Fish and Game Code sections 3503 and 3503.5 and the federal Migratory Bird Treaty Act. Therefore, if wintering burrowing owl occupy the Project area or adjacent habitat, Project impacts to burrowing owl would be potentially significant.

For an adequate environmental setting and to reduce impacts to wintering burrowing owl to less-than-significant, CDFW recommends that the MND include the following mitigation measure.

*MM BIO-3:* Prior to Project activities occurring during the burrowing owl wintering season from September 1 to January 31, a qualified biologist shall conduct a habitat assessment, and if warranted based on the habitat assessment, a survey pursuant to the CDFW *Staff Report on Burrowing Owl Mitigation* (CDFW 2012 Staff Report). The habitat assessment and surveys shall encompass the Project site and a sufficient buffer zone to detect owls nearby that may be impacted commensurate with the type of disturbance anticipated up to 500 meters or 1,640 feet, as outlined in the CDFW 2012 Staff Report, and include burrow surrogates such as culverts, piles of concrete or rubble, and other non-natural features, in addition to burrows and mounds. Time lapses between surveys or Project activities shall trigger subsequent surveys, as determined by a qualified biologist, including but not limited to a final survey within 24 hours prior to ground disturbance. Surveys shall occur each year of Project construction during burrowing owl wintering season if there is suitable habitat on or adjacent to the Project site (within up to 1,640 feet) where owls could be disturbed, as determined by a qualified biologist. The qualified biologist shall have a minimum of two years of experience implementing the CDFW 2012 Staff Report survey methodology resulting in detections. Detected burrowing owls shall be avoided pursuant to the buffer zone prescribed in the CDFW 2012 Staff Report unless otherwise approved in writing by CDFW, and any passive relocation plan for non-nesting owls shall be subject to CDFW review.

Please be advised that CDFW does not consider eviction of burrowing owls including passive removal of an owl from its burrow or other shelter, as a "take" avoidance, minimization, or mitigation measure; therefore, off-site habitat compensation shall be included in the eviction plan. Habitat compensation acreages shall be approved by CDFW, as the amount depends on site-specific conditions, and completed before Project construction. It shall also include placement of a conservation easement and preparation and implementation of a long-term management plan.

### **Response**

Burrow surveys have been conducted across all potential grassland habitats within the preserve. The burrowing owl was observed in the northern part of the preserve (38.020429, -122.561295), which is

well over the 500-meter buffer. The surveys were conducted in 2017, 2018 and again in 2022. In the 2017-2018 survey, only two inactive ground squirrel burrows were within the project area. No signs of western burrowing owls were observed. In the 2022 survey, no burrows larger than 3 inches, the average ground squirrel burrow size, were observed, nor were any other features a burrowing owl could use. Based on these results, the Marin County Open Space District has concluded there are no burrowing owls in the project area however, the Marin County Open Space District will include looking for habitat features during the preconstruction surveys and provide the results to the CDFW.

As required by Mitigation Measure BIO-1, the Marin County Open Space District would conduct pre-construction surveys. If state and/or federally listed birds are found breeding within the construction area, activities shall be halted until the chicks have fledged. If construction activities must continue and would incur take of the listed species, MCOSD would consult with the CDFW and USFWS prior to the initiation of work that would result in take.

### **Comment Summary 3: Special-status Herpetofauna**

The project may impact the following special-status herpetofauna, which the MND identified have a low potential to occur: California giant salamander (*Dicamptodon ensatus*), foothill yellow-legged frog (*Rana boylei*) Northwest/North Coast clade, California red-legged frog (*Rana draytonii*), and western pond turtle (*Actinemys marmorata*). The California Natural Diversity Database (CNDDB) identifies occurrences of all four species within two to five miles of the project. The project could impact stream or upland dispersal habitat or refugia for special status herpetofauna through vegetation removal and grading activities, potentially injuring or killing them. Based on the above, if these special-status herpetofauna occur within the project area, project impacts to special-status herpetofauna would be potentially significant.

To reduce potential impacts to less-than-significant, CDFW recommends including the following mitigation measure in the MND.

*MM BIO-4:* For all Project activities that occur within 500 feet of stream or wetland habitat, prior to ground-disturbing activities, a qualified biologist shall conduct a pre-construction survey within 48 hours prior to the start of Project activities, focusing on the presence of foothill yellow-legged frog, California red-legged frog, California giant salamander and western pond turtle and their nests. If any of these special-status species are discovered during the survey, Project activities shall not begin until CDFW has been consulted and approved in writing measures to avoid and minimize impacts to special-status species, and the measures have been implemented. If California red-legged frog is encountered, the Project shall consult with USFWS pursuant to the federal Endangered Species Act and obtain any required authorization for impacts.

If an LSA Notification is submitted for Project activities affecting streams, CDFW may include in the LSA Agreement, if issued, additional protection measures for special status herpetofauna pending further analysis of the potential for their occurrence within the project area.

### **Response**

Although the surrounding project area has small rodent burrows and shrubby habitat that may provide shelter, special status herpetofauna have not been observed within the preserve. The Biological Resources Assessment prepared by Prunuske Chatham, Inc. in August 2019 did not find presence of California giant salamander (*Dicamptodon ensatus*), foothill yellow-legged frog (*Rana boylei*) Northwest/North Coast clade, California red-legged frog (*Rana draytonii*), or western pond turtle (*Actinemys marmorata*) within the project area. Due to timing of the survey, no streams or wet seepy areas within 500 meters of the project area were observed. The project area and nearby areas do not contain other wet areas where these species could disperse to and therefore, implementation of the proposed project would not impact these species. The Marin County Open Space District would observe changes to the landscape from any winter/spring rains and would include any nearby habitat in a preconstruction survey.

The Marin County Open Space District submitted regulatory permit applications for the proposed project, including a Lake or Streambed Alteration Agreement to CDFW via EPIMs, on June 13, 2022 and is currently working through the permitting process.

### **Comment Summary 4: American Badger**

The project is within the range of the American badger (*Taxidea taxus*) within grassland habitat and oak woodland habitat that may be suitable for American badger. Badgers range throughout most of California

and can dig burrows in a single day; therefore, the species may occupy the project site and adjacent habitat prior to project construction. Additionally, the California Wildlife Habitat Relationships Predicted Habitat Suitability for the grassland portions of the site is High Suitability. American badger is an SSC and project impacts to American badger would be potentially significant.

For an adequate environmental setting and to reduce impacts to less-than-significant, CDFW recommends that the MND: (1) analyze the potential for American badger to occur on and adjacent to the project area, and (2) include mitigation measures to ensure impacts are reduced to less-than-significant. These measures may include a qualified biologist surveying for the species including adjacent habitat prior to construction, avoiding occupied burrows including a sufficient buffer approved by CDFW, and preparing and implementing a CDFW-approved relocation plan if badgers are found on or adjacent to the project site and cannot be avoided.

#### **Response**

Burrow surveys have been conducted across all potential grassland habitats within the preserve. The burrowing owl was observed in the northern part of the preserve (38.020429, -122.561295), which is well over the 500-meter buffer. The surveys were conducted in 2017, 2018 and again in 2022. In the 2017-2018 survey, only two inactive ground squirrel burrows were within the project area. In the 2022 survey, no burrows larger than 3 inches, the average ground squirrel burrow size, were observed. Based on these results, the Marin County Open Space District has concluded there are no American badgers in the project area however, the Marin County Open Space District will include looking for habitat features during the preconstruction surveys and provide the results to the CDFW.

#### **Comment Summary 5: Special-Status Plants**

It is unclear whether the project could impact special-status plants. The MND states that no special-status plants are expected to occur, given negative survey results. The MND notes that Prunuske Chatham, Inc. completed a Biological Resources Assessment (BRA) in August 2019, which included botanical surveys that were conducted in spring 2019. The BRA was not included as an appendix of the MND, and as such, CDFW cannot determine whether the BRA sufficiently addressed potential impacts to special-status plants. As outlined in CDFW's *Protocol for Surveying and Evaluating Impacts to Special-Status Native Plant Populations and Sensitive Natural Communities* failure to locate special-status plants during one field season may not adequately determine presence, and multiple years of surveys may be necessary depending on presence of adverse environmental conditions and species life history.

CDFW recommends including the BRA as an appendix to the MND and including the following mitigation measure.

*MM BIO-5:* The 2019 botanical survey report documenting absence of special-status plants within areas subject to Project direct and indirect impacts shall be provided to CDFW for written acceptance. If the survey report is not accepted in writing by CDFW, a qualified biologist shall conduct additional botanical surveys during the appropriate blooming period and conditions for all special-status plants that have the potential to occur prior to the start of construction. The survey area shall include the Project area and adjacent habitat where indirect impacts, for example hydrological modifications, may occur. More than one year of surveys may be necessary. Surveys shall be conducted following CDFW's *Protocol for Surveying and Evaluating Impacts to Special-Status Native Plant Populations and Sensitive Natural Communities* (<https://wildlife.ca.gov/Conservation/Survey-Protocols#377281280-plants>). Survey reports shall be submitted to CDFW for written approval prior to the start of construction. If any special-status plant species are observed, the Project shall fully avoid direct and indirect impacts to all individuals and prepare and implement a CDFW-approved avoidance plan prior to Project activities. If the Project cannot avoid impacts to special-status plants, the Project shall prepare and implement a CDFW-approved mitigation plan prior to project construction including: 1) compensatory habitat mitigation at a 3:1 mitigation to impact ratio, and 2) funding for management of mitigation land in perpetuity, unless otherwise approved in writing by CDFW.

#### **Response**

The Marin County Open Space District will provide the PCI Biological Resources Assessment to CDFW. PCI conducted botanical surveys to characterize plant communities, compile an inventory of species observed, and to evaluate the potential for presence of special-status plant species. Surveys were conducted on April 16, 26 and June 18, 2019. Special-status species identified as having potential to occur based on the background review would typically be blooming and identifiable during those times. PCI conducted research to determine typical blooming periods and concluded that it would be unlikely

for any rare plant species would be blooming later than June 18<sup>th</sup>. Surveys followed the protocol described in the California Department of Fish and Games (CDFW) *Protocols for Surveying and Evaluating Impacts to Special-status Native Plant Populations and Natural Communities* (CDFW 2009), as well as other survey guidelines. During each survey the existing trails and proposed general areas for future trails were traversed on foot and all habitats were surveyed. All plants observed were identified using the *Jepson eFlora* (Jepson Flora Project 2019) and *Marin Flora* (Howell et al. 2007) to the taxonomic level necessary to determine whether or not they were rare. Botanical nomenclature follows the *Jepson eFlora*.

A background literature and database search was conducted to determine the potential for special-status species and sensitive habitats to occur within or adjacent to the Study Area. The search focused on reported occurrences for the Novato and San Rafael 7.5' USGS quadrangles within a 5-mile buffer around the Preserve. General references, including aerial photographs, GIS maps, and soil survey reports were also consulted to evaluate the potential for unique biological communities and special-status species. The review included, but was not limited to, the following sources:

- California Natural Diversity Database (CNDDDB)4 (CDFW 2019)
- California Sensitive Natural Communities (CDFW 2018)
- A Manual of California Vegetation Online (CNPS 2019a)
- CNPS Inventory of Rare and Endangered Vascular Plants of California (CNPS 2019b)
- Calflora database (Calflora 2019)
- Information for Planning and Conservation (IPaC) Trust Resource List for the project area (USFWS 2019)
- Natural Resources Conservation Service Web Soil Survey (NRCS 2019)
- Marin County Open Space District Road and Trail Management Plan (MCOSD 2014);
- Marin County Open Space District Vegetation and Biodiversity Management Plan (MCOSD 2015); and
- Field guides and general references for plants, birds, mammals, reptiles, amphibians, and invertebrates.

The IS/MND on page 76 includes the following conclusion: “The botanical surveys conducted as part of the PCI Biological Assessment concluded that no special-status plant species were documented within the study area.”

The PCI Biological Resources Assessment included several recommendations to minimize potential impacts to biological resources. Most of these recommendations have been incorporated into the project design or are included in the RTMP BMPs however, one recommendation specifically addressed trail decommissioning in the sensitive serpentine habitat. The recommendation suggested avoiding any ground disturbance in serpentine habitat, and if ground disturbance could not be avoided, conduct a focused botanical survey of the area prior to disturbance and develop a restoration plan.

Approximately 0.6 acre of serpentine grassland exists in the project area. Implementation of the proposed project would include decommissioning of Social Trail A, which includes approximately 0.04 acres in serpentine grassland. Decommissioning Social Trail A would involve passive methods, and no ground-disturbing activity would occur within serpentine grassland. The remaining trails proposed for decommissioning or improvement do not occur within serpentine grassland. Given that no ground-disturbing activity would occur within serpentine habitat, no impact would occur from implementation of the proposed project.

#### **Comment Summary 6: Lake and Streambed Alteration and Riparian Habitat**

The MND notes that “the proposed trail bridges would be located above the 100-year flood elevation spanning the banks of the ephemeral streams and would not be subject to regulatory permit authorizations.” However, bridges often cause permanent shading of the stream which may result in a substantial adverse impact to stream habitat. The MND also notes that the concrete foundations for these bridges will be set at the top of the stream banks. Depending on site-specific characteristics—such as slope of bank and adjacent lands, location and extent of riparian vegetation, and hydrological profile—installation of these bridges may

have permanent or temporary impacts to the stream and its associated ecological communities and be subject to an LSA Notification. The MND mentions that multiple unnamed seasonal drainages occur throughout the project area, but it is unclear what level of impact, if any, the project will have on these drainages and if they are different than the streams where crossings will be installed. If permanent or temporary impacts to ephemeral drainages may be substantial the impacts would be subject to an LSA Notification. The project may result in permanent and temporary impacts to stream and riparian habitat. If the Project impacts stream and associated riparian habitat, impacts to these resources would be potentially significant.

For an adequate environmental setting, to comply with Fish and Game Code section 1602 et seq., and to reduce impacts to streams to less-than-significant, CDFW recommends including the following mitigation measure in the MND:

*MM BIO-5:* For Project activities that may substantially alter the bed, bank, or channel of on-site drainages or associated riparian habitat, including but not limited to bridge installation or modification, the Project shall consult with CDFW to determine if an LSA Notification is warranted, including providing CDFW with an aerial based map of aquatic features on the Project area. If CDFW determines that any of the Project impacts are subject to Fish and Game Code section 1600 et seq., the Project shall submit an LSA Notification to CDFW prior to Project construction. If CDFW determines that an LSA Agreement is warranted, the Project shall comply with all required measures in the LSA Agreement, including but not limited to requirements to mitigate impacts to the streams and riparian habitat. Permanent impacts to the stream and associated riparian habitat shall be mitigated by restoration of riparian habitat at a minimum 3:1 mitigation to impact ratio based on acreage and linear distance as close to the Project area as possible and within the same watershed and year as the impact, unless otherwise approved in writing by CDFW. Temporary impacts shall be restored on-site in the same year as the impact at a 1:1 ratio.

Please be advised that an LSA Agreement obtained for this Project would likely require the above recommended mitigation measures, as applicable.

Furthermore, while the MND states that work will be restricted to the dry season to the extent feasible, it also states work will occur March – May. CDFW considers the dry season to be June 15 to October 15, and an LSA agreement would likely limit work to this window, with the possibility to extend work on a week-to-week basis if conditions remain dry, unless additional justification for working in the wet season is provided.

### **Response**

Each of the bridges are located on ephemeral streams in oak-bay woodlands under 100 percent canopy. The shading effect of these small trail bridges will have a less than significant impact on stream habitat. The footings will be set above and beyond the stream banks and out the influence of the streams. No riparian vegetation will be removed to construct the bridges. The hydrological profile will not be impacted by the bridges, and the ephemeral streams will not experience any temporary or permanent impacts from their placement.

Implementation of the rock armored ford crossings may alter the bed, bank, and/or channel of the ephemeral streams. The Marin County Open Space District submitted regulatory permit applications for the proposed project, including a Lake or Streambed Alteration Agreement to CDFW via EPIMs, on June 13, 2022 and is currently working through the permitting process.

No riparian vegetation would be removed to implement the proposed project.

The multiple unnamed seasonal drainages that occur throughout the project area are the same drainages where small trail bridges are proposed to improve water quality by reducing the existing erosion and sedimentation caused by visitors crossing through the bed of the drainages. Upslope work may occur as early as March, depending on weather, soil moisture, and the results of pre-construction surveys for special status species. Descriptions of the potential impact of the stream crossing are included in the IS/MND, and duplicated below:



**Table 1: Trail Bridge Stream Crossings**

| CROSSING REFERENCE            | LENGTH  | TEMPORARY CONSTRUCTION IMPACT | PERMANENT IMPACT | CUT AND FILL VOLUME   |
|-------------------------------|---------|-------------------------------|------------------|-----------------------|
| Memorial Trail Social Trail 1 | 30 feet | 80 feet                       | 40 feet          | 3 cubic yards         |
| Memorial Trail Social Trail 4 | 16 feet | 40 feet                       | 25 feet          | 2 cubic yards         |
| Memorial Trail Social Trail 7 | 24 feet | 80 feet                       | 30 feet          | 4 cubic yards         |
| Memorial Trail Social Trail 8 | 30 feet | 80 feet                       | 40 feet          | 6 cubic yards         |
| Malone Trail Social Trail 10  | 18 feet | 40 feet                       | 28 feet          | 4 cubic yards         |
| Malone Trail Social Trail 12  | 18 feet | 40 feet                       | 28 feet          | 2 cubic yards         |
| <b>TOTAL</b>                  |         |                               |                  | <b>21 cubic yards</b> |

**Table 2: Rock Armored Stream Crossings**

| CROSSING REFERENCE            | LENGTH  | TEMPORARY CONSTRUCTION IMPACT | PERMANENT IMPACT | CUT AND FILL VOLUME   |
|-------------------------------|---------|-------------------------------|------------------|-----------------------|
| Memorial Trail Social Trail 2 | 10 feet | 15 feet                       | 10 feet          | 2 cubic yards         |
| Memorial Trail Social Trail 3 | 10 feet | 15 feet                       | 10 feet          | 2 cubic yards         |
| Memorial Trail Social Trail 5 | 12 feet | 20 feet                       | 12 feet          | 4 cubic yards         |
| Memorial Trail Social Trail 6 | 16 feet | 24 feet                       | 16 feet          | 6 cubic yards         |
| Malone Trail Social Trail 9   | 12 feet | 20 feet                       | 12 feet          | 3 cubic yards         |
| Malone Trail Social Trail 11  | 8 feet  | 16 feet                       | 8 feet           | 3 cubic yards         |
| Malone Trail Social Trail 13  | 12 feet | 20 feet                       | 12 feet          | 3 cubic yards         |
| <b>TOTAL</b>                  |         |                               |                  | <b>23 cubic yards</b> |

**Comment Summary 7: Editorial Comments**

CDFW appreciates that the MND included Appendix A, which includes a list of Best Management Practices (BMP) utilized by the District as part of their Road and Trail Management Plan. However, it is not always clear which BMPs are being implemented for the project and it appears some BMPs should be designated as enforceable mitigation measures. For clarity, CDFW recommends that BMPs being implemented for the project that are necessary to reducing impact to less-than-significant be included as a mitigation measure in the MND.

**Response**

The IS/MND lists the applicable RTMP Policies and BMPs in the Setting section of each of the environmental checklist topic areas, under the sub-heading “Applicable RTMP Policies and BMPs.”

**Comment Summary 8: Environmental Data**

CEQA requires that information developed in environmental impact reports and negative declarations be incorporated into a database which may be used to make subsequent or supplemental environmental determinations. Accordingly, please report any special-status species and natural communities detected during project surveys CNDDB. The CNDDB field survey form can be filled out and submitted online at the following link: <https://wildlife.ca.gov/Data/CNDDB/Submitting-Data>. The types of information reported to CNDDB can be found at the following link: <https://www.wildlife.ca.gov/Data/CNDDB/Plants-and-Animals>.

**Response**

The IS/MND describes the California Bay Forest, Valley Oak Woodland, Annual and Perennial Grasslands, and Serpentine Grassland which are considered sensitive plant communities per CDFW’s List of California Terrestrial Natural Communities and the Manual of California Vegetation. The IS/MND describes two special-status birds documented within the study area including Oak titmouse (*Baeolophus inornatus*) and Nuttall’s woodpecker (*Picoides nuttallii*). The Marin County Open Space District will ensure that any required CNDDB reporting is completed. No special status plants were identified within the project area.

**Comment Summary 9: Environmental Document Filing Fees**

The project, as proposed, would have an impact on fish and/or wildlife, and assessment of environmental document filing fees is necessary. Fees are payable upon filing of the Notice of Determination by the Lead

Agency and serve to help defray the cost of environmental review by CDFW. Payment of the environmental document filing fee is required in order for the underlying project approval to be operative, vested, and final.

**Response**

The Marin County Open Space District would pay the applicable CDFW filing fee when filing the Notice of Determination.

## **Master Response 1: Support of the Proposed Project**

### **Comment Summary**

Of the comments received, the majority supported the proposed project, including the Marin Conservation League, and several commenters welcomed the opportunity to volunteer their time to implement and/or maintain the proposed project. Common reasons for supporting the proposed Project include the following:

- Provides a gentler grade that would be safer for trail users by reducing risk of injury
- Better support the recreational needs of the community, including students at nearby schools
- Provides more equitable access for all visitors and improved trail connectivity
- Would improve commuter access, thereby reducing vehicles on roads
- Design features including reverse grades and rolling dips to remove water from the trail
- Improves environmental conditions by reducing erosion, landslide potential, and habitat fragmentation consistent with the MCOSD's Road and Trail Management Plan

### **Response**

The Marin County Open Space Districts appreciates support of the proposed project.

## **Master Response 2: Concerns Regarding Oak Ridge Trail and Ridgewood Drive**

Several comments asked questions pertaining to designating the Oak Ridge Trail and Ridgewood Drive. These comments and questions are summarized in this Memorandum along with the MCOSD responses.

### **Comment Summary**

Provide clarity of the Oak Ridge Trail and decommissioning of the associated social trails, including how they would affect private land.

### **Response**

The proposed project would not occur on private property or provide a trail connection to private property. The existing social trail connecting to Oak Ridge Road does so on private property. The proposed trailhead would be located on public Marin County Open Space District property that abut Oak Ridge Road, approximately 100-feet downslope from the existing social trail, which would be decommissioned as part of the proposed project. Marin County Open Space District staff met on site with the property owner to explain the plans for the Oak Ridge Trail connection and the proposed decommissioning of existing social trails that currently lead to private property.

### **Comment Summary**

Concern regarding including the Oak Ridge Trail on the publicized trail map and the potential for increased traffic, vehicle parking, and increased garbage. Oak Ridge Road and Circle Road have no sidewalks and a lot of pedestrian traffic and dog walking, and the trailhead is adjacent to the only fire hydrant. These existing conditions make increased traffic and on-street parking dangerous for local residents. Concern was also expressed regarding potential hazards of inadequate emergency vehicle access and response times due to the narrow road geometry.

### **Response**

Marin County Open Space District does not expect the proposed improvements to the existing 0.10 mile of social trail connecting to Oak Ridge Road would change visitation patterns, including traffic, parking, garbage, or other nuisances on Oak Ridge Road.

The existing Oak Ridge Trail connection currently serves the residences on Oak Ridge Road. The proposed project would not add a new recreational use or create a new connection, only improve the existing trail. If local residents find cars illegally parked or have other nuisance complaints on the public roadway, the City of San Rafael Police Department or the Marin County Sheriff Department should be contacted. If local residents have complaints regarding behavior within the preserve, the Marin County Open Space District should be contacted. It is beyond the jurisdiction of the Marin County Open Space District to propose improvements to public roads outside of its property. Those concerns should be presented to the Marin County Public Works Department. As part of its trail monitoring program, the Marin County Open Space District would install visitor use cameras for a six-week period in years 1, 2 and 5 after project implementation to capture visitor use trends. One camera would be placed on the Memorial Trail near the Oak Ridge social trail and the second would be placed on the Malone Trail.

Implementation of the proposed project is anticipated to increase neighborhood trail access at the designated trailheads at Malone Lane, Dias Way, and Del Haro Way and introduce bicycles to the Memorial Trail at the Del Haro Way trailhead. The increase in use is anticipated to be locally driven by the residents of Terra Linda and the Terra Linda High School sports programs, particularly the cross-country running team and the mountain bike team, Go Trojans. The proposed project does not include new designated parking or other amenities that would normally contribute to a significant increase in visitors, new types of visitors, or create a destination attraction.

**Comment Summary**

Suggestion to place signage along Oak Ridge Road prohibiting trail access parking so adequate emergency services access and response times are maintained.

**Response**

The Marin County Open Space District does not expect the proposed improvements to the existing 0.10 mile of social trail connecting to Oak Ridge Road would change visitation patterns, including traffic, parking, and emergency vehicle access on Oak Ridge Road. The placement of signage on public roads, including No Parking signage, is outside of the jurisdiction of the Marin County Open Space District. These concerns should be presented to the Marin County Public Works Department.

**Comment Summary**

Concern regarding increased usage in the surrounding project area would expose local residents to greater exposure of impacts from fire hazards and question as to whether signage would be installed to emphasize the high fire hazard danger in the project area.

**Response**

The Marin County Open Space District does not expect the proposed improvements to the existing 0.10 mile of trail would change visitation patterns or increase fire hazard within the preserve. Currently and historically, pedestrian and equestrian access has been in place connecting the Los Ranchitos neighborhood and Oak Ridge Road to the Memorial Trail through the use of deteriorating social trails and pathways. The proposed improvements would provide a sustainable solution for this use. The proposed project would improve and designate the Oak Ridge Trail and would also prohibit use of the trail by bicycles, thus continuing the current use pattern of neighborhood hikers and equestrians. As designated trail use type will be limited, and as the access to the Oak Ridge Trailhead is peripheral to that of the proposed Diaz, Del Haro and Malone Trailheads from the greater Terra Linda area, visitation patterns or increased fire hazard risk by increased use is not expected. Current Marin County Open Space District practice is to include information regarding fire danger on the secondary entrance signage.

**Comment Summary**

Concern regarding crossing the seasonal creek to access the Oak Ridge Trail being potentially dangerous and could result in injuries.

**Response**

The comment is referencing a seasonal creek crossing associated with a social trail proposed for decommissioning. The proposed connection to Oak Ridge Road would cross the creek on Marin County Open Space District property, not the location of the current social trail, and would utilize a bridge to span the stream. This proposed improvement would eliminate the concern of visitors injuring themselves while crossing the seasonal creek crossing to access the proposed Oak Ridge Trail.

**Comment Summary**

Concern regarding parking a truck and horse trailer on Oak Ridge Road.

**Response**

The proposed improvements are not expected to change the behavior of equestrians trailering to access the Oak Ridge Trailhead. This was confirmed by several members of the Marin Horse Council. The trail is currently used by one or two local equestrians that ride their horse to the site, and that behavior is expected to remain the same after implementation of the proposed project.

**Comment Summary**

The proposed project is not needed and is a waste of Measure A money and suggested more fire control near the trails and dog waste boxes at trailheads instead of improving the trails and installing signage. Question regarding how erosion was documented.

**Response**

Bare soil, rutting, rilling, gulying and downslope sediment deposition are all signs of erosion, and all are evident in abundance on the current Memorial Trail and Oak Ridge social trail alignments. These existing conditions are unfavorable for trail use and maintenance. Implementation of the proposed project would correct these unfavorable conditions to provide an improved trail system for visitors and maintenance.

**Comment Summary**

Notice of the proposed project was poorly placed, in the middle of the Oak Ridge Trail, and should have been placed on the street, on the top of Memorial Trail, or at the end of Dias Way.

**Response**

The posting on the Oak Ridge social trail occurred at the Marin County Open Space District's property line. Between that point and the public street is private property, where the MCOSD does not have permission to post signs. The public Notice of Intent to Adopt a Mitigated Negative Declaration for the proposed project was conducted in compliance with the requirements of the California Environmental Quality Act by posting in the project area, publishing the notice in the legal section of the Marin IJ, and mailing the notice to residents within a 300-foot radius of the project area. Marin County Open Space District exceeded these required public noticing requirements by mailing the notice beyond the required 300-foot radius, posting on its project webpage, and emailing the notice to interested parties.

**Comment Summary**

Concern regarding lack of consultation of the proposed project with the Los Ranchitos Improvement Association.

**Response**

Upon awareness of the Los Ranchitos Improvement Association, the Marin County Open Space District conducted two meetings on site with Los Ranchitos Improvement Association members, exchanged several email correspondences, and several members were mailed notices regarding the proposed project.

**Comment Summary**

Concern regarding parking on Ridgewood Drive, speeding cars, increase trash and dog poop, and fire hazard, especially from people smoking cigarettes. Request for resident parking, speed bumps, signage with preserve hours, re-open gate at Los Altos to provide parking and vehicle turn-around.

**Response**

The IS/MND discussed the expected increase in recreational use on pages 79, 83, and 104. In summary, the Marin County Open Space District expects that any increase in recreational use on the Memorial, Malone, and Dias Trails to come from neighbors and school children traveling by foot or bike and not become a destination for people traveling by car. The increase in use is anticipated to be locally driven by the residents of Terra Linda and the Terra Linda High School sports programs, particularly the cross-country running team and the mountain bike team, Go Trojans. The proposed project would formalize the Malone Lane, Oak Ridge and Del Haro Way trailheads, which are currently undesignated, and would designate the formalized Del Haro Trailhead of the realigned Memorial Trail to multi-use, which would provide access to non-motorized bikes on the Memorial Trail in addition to hikers, equestrians, and dogs. These changes to the trail system within the project area are anticipated to increase neighborhood trail access at the designated trailheads and introduce bicycles to the Memorial Trail at the Del Haro Way trailhead. This would be a neighborhood trail connection that would primarily serve the neighborhood rather than a destination trail that would attract visitors in cars. The proposed project does not include new designated parking or other amenities that would normally contribute to a significant increase in visitors, new types of visitors, or create a destination attraction. Implementation of the proposed project is not likely to significantly increase vehicle trips for recreational use of these trails. For this reason, parking or increased vehicular traffic is not expected to significantly increase.

If local residents find cars illegally parked or have other nuisance complaints on the public roadway, the City of San Rafael Police Department or the Marin County Sheriff Department should be contacted. If local residents have complaints regarding behavior within the preserve, the Marin County Open Space District should be contacted. It is beyond the scope of the proposed project to implement improvements to public roads. Those concerns should be presented to the Marin County Public Works Department.

Current Marin County Open Space District practice is to include information regarding fire danger on the primary and secondary entrance signage. Preserve rules and hours is included on entry signage. It is beyond the scope of the proposed project to implement improvements to public roads including the vehicle turn-around proposed by some Ridgewood Drive residents, and the vehicle turn-around is not included as part of the proposed project. The request to install a vehicle turn-around could be presented to the Marin County Public Works Department.

#### **Comment Summary**

Expressed opposition to the turn-about at Ridgewood Drive proposed by other neighbors because it would create a nuisance with vehicles parking and kids drinking, playing loud music, and vehicular fender benders.

#### **Response**

It is beyond the scope of the proposed project to implement improvements to public roads including the vehicle turn-around proposed by some Ridgewood Drive residents, and the vehicle turn-around is not included as part of the proposed project.

### **Master Response 3: Concerns Regarding Proposed Dias Way Trail Connection**

#### **Comment Summary**

Question regarding if the spur to Dias Way would retain multi-use for bike and equestrian use to disperse local access.

#### **Response**

The access from Dias Way to the planned Memorial Trail realignment is relatively steep compared to the proposed Del Haro access. For this reason, and to provide a logical separation of use, the Dias Way access is planned as hiking only.

#### **Comment Summary**

Question regarding the plan for parking rules or guidelines in or around the trail start/finish locations and if the dead-end termination at Dias Way would have any physical changes.

#### **Response**

The IS/MND discussed the expected increase in recreational use on pages 79, 83, and 104. In summary, the Marin County Open Space District expects that any increase in recreational use on the Memorial, Malone, and Dias Trails to come from neighbors and school children traveling by foot or bike and not become a destination for people traveling by car. The increase in use is anticipated to be locally driven by the residents of Terra Linda and the Terra Linda High School sports programs, particularly the cross-country running team and the mountain bike team, Go Trojans. The proposed project would formalize the Malone Lane, Oak Ridge and Del Haro Way trailheads, which are currently undesignated, and would designate the formalized Del Haro Trailhead of the realigned Memorial Trail to multi-use, which would provide access to non-motorized bikes on the Memorial Trail in addition to hikers, equestrians, and dogs. These changes to the trail system within the project area are anticipated to increase neighborhood trail access at the designated trailheads and introduce bicycles to the Memorial Trail. The proposed project does not include new designated parking or other amenities that would normally contribute to a significant increase in visitors, new types of visitors, or create a destination attraction. Implementation of the proposed project is not likely to increase vehicle trips for recreational use of these trails. For this reason, parking or increased vehicular traffic is not expected to significantly increase. Current Marin County Open Space District practice is to include information regarding fire danger on the secondary entrance signage.

If local residents find cars illegally parked or have other nuisance complaints on the public roadway, the City of San Rafael Police Department or the Marin County Sheriff Department should be contacted. If local residents have complaints regarding behavior within the preserve, the Marin County Open Space District should be contacted. It is beyond the jurisdiction of the Marin County Open Space District to propose improvements to public roads outside of its property. Those concerns should be presented to the Marin County Public Works Department.

### **Master Response 4: Concerns Regarding the Proposed Malone Trail**

#### **Comment Summary**

Request to make the Malone Trail segment accessible to bikes.

**Response**

The Malone Trail is located on relatively steep ground in an inner-gorge to stream-side geomorphic setting within a California bay-laurel forest. Typical to this type of setting, there is little in the way of undergrowth vegetation to provide a buffer to rain splash erosion and runoff impacts. The area currently contains a series of social hiking trails. In order to continue to provide access, but in a sustainable manner, this trail has been planned as a minimal width, single track, hiking only trail to have the least amount of impact to its surroundings. During the development phase of the proposed project, there was quite a bit of discussion to intentionally separate recreational uses. The Malone Trail as a hiker only trail is responsive to the community feedback received during project development, in addition to the physical constraints. Currently, there is approximately 3.08 miles of trail within the preserve and of that, approximately 0.44 is accessible to bikes. After implementation of the proposed project, there would be approximately 4.56 miles of trail within the preserve, and of that approximately 1.78 miles would be accessible to bikes.

**Comment Summary**

Request for clarification regarding decommissioning the Malone Social Trail and what that involves, particularly in proximity to private property.

**Response**

The existing Malone social trail that runs behind private property, through the creek, and travels steeply uphill. After implementation the proposed trail alignment to provide sustainable access, the existing social trail would be decommissioned by implementing multiple closure techniques, including decompacting the tread, applying native grass seed, erosion control blankets, and/or mulch where appropriate, recontouring to the native slope where appropriate, and applying native organic material to further protect the soil from erosion and to discourage use. The installation of signage and split rail fencing may also be employed to alert users that restoration efforts are underway and to please keep off of the area.

The proposed Malone Trail would gradually contour down the slope from the ridge above Devon Drive, traverse the small drainages with bridge crossings, and approach its termination point at the street end of the proposed Malone Trail alignment from the interior of the preserve, rather than along the property boundary and directly behind the fence at the boundary with private property, as it does now.

**Master Response 5: Request Regarding Crestwood Trail****Comment Summary**

Request to allow dogs on leash on the Crestwood Trail as it is a mapped fire road that was donated to the County by the neighborhood and dogs have been off leash in this area for years.

**Response**

The Crestwood Trail is outside of the proposed project area. Marin County Open Space District staff will share this request with its Operations and Maintenance staff.

## List of Commentators and Reference to Applicable Master Response

| <b>Name of Commentator</b> | <b>Master Response Reference</b> |
|----------------------------|----------------------------------|
| Debbie Hultman             | CDFW                             |
| Craig Ross                 | 1                                |
| John Cheetham              | 1                                |
| Robin Pendoley             | 1                                |
| Grace Kredo-Brown          | 1                                |
| Warren Lanier              | 1                                |
| Gavin Blair                | 1                                |
| Jane Jaroszewski           | 1                                |
| Karen Madden               | 1                                |
| Paul McDermott             | 1                                |
| Kim Keith-Brown            | 1                                |
| Jason Matthies             | 1                                |
| Galen Pewtherer            | 1                                |
| Joshua Brown               | 1                                |
| Anthony Craig              | 1                                |
| Chris Hagan                | 1                                |
| Ian Fein                   | 1                                |
| Matthew Park               | 1                                |
| Paul Jauregui              | 1                                |
| Jason Montour              | 1                                |
| Eric Bridges               | 1                                |
| Scott Murray               | 1                                |
| Sean O'Donnell             | 1                                |
| Britt Parawell             | 1                                |
| Kimberleigh Cox            | 1                                |
| Lorene Jackson             | 1                                |
| Naveen Kumar               | 1                                |
| Sonya Kumar                | 1                                |
| Vivicka Parawell           | 1                                |
| Warren Lanier              | 1                                |
| Cynthia Kredo              | 1                                |
| Dan Stevens                | 1                                |
| Tom Boss                   | 1                                |
| Aaron Golbus               | 1                                |
| Brian Casey                | 1                                |
| Chris Carisetti            | 1                                |
| Cindy Irish                | 1                                |
| Daniel Sankey              | 1                                |
| Drew Gilligan              | 1                                |
| Harriot Manley             | 1                                |
| Izzy Landry                | 1                                |
| Jasper van Woudenberg      | 1                                |
| Jeff Landry                | 1                                |
| Mel Santos                 | 1                                |
| Michael Krueger            | 1                                |
| Michael Yoham              | 1                                |
| Philip Mooney              | 1                                |
| Stephen Barnes             | 1                                |
| Christian Hobbs            | 1                                |
| Ethan Schwartz             | 1                                |
| Joe Harvey                 | 1                                |
| Kevin Gerzevitz            | 1                                |
| Luc Pieron                 | 1                                |



| <b>Name of Commentator</b> | <b>Master Response Reference</b> |
|----------------------------|----------------------------------|
| Preston McCoy              | 1                                |
| Robert Miller              | 1                                |
| Sean Hogan                 | 1                                |
| Sophia Beavis              | 1                                |
| Alex Burnham               | 1                                |
| Annabel Heinemann          | 1                                |
| Donald Johnson             | 1                                |
| Gautham Iyer               | 1                                |
| Jackson Ratcliffe          | 1                                |
| Vernon Huffman             | 1                                |
| Lloyd Miller               | 1                                |
| Sammy Owen                 | 1                                |
| Shirley Fischer            | 1                                |
| Jeff Weidner               | 1 and 4                          |
| Lorene Jackson             | 1 and 5                          |
| Emily Morganti             | 2                                |
| Judy Schriebman            | 2                                |
| Christian Douglas          | 2                                |
| Jim Sauve                  | 2                                |
| Rick Lewis                 | 2                                |
| Geoff Evans                | 2                                |
| Danielle Meshorer          | 2                                |
| Susan Gahry                | 2                                |
| Ronald Zien                | 2                                |
| Colleen Vergari            | 2 and 4                          |
| Chris Matthews             | 3                                |
| Brian Ghidinelli           | 3                                |

## Response to CDFW Comments

**From:** [REDACTED]  
**To:** [Julene, Michelle](#)  
**Cc:** [REDACTED] [Hoom, Jason](#)  
**Subject:** Memorial Trail Improvement Project-SCH2022060238  
**Date:** Wednesday, July 13, 2022 3:18:11 PM  
**Attachments:** [Memorial Trail Improvement Project-SCH2022060238-Julene-BIRD071322.pdf](#)

---

Some people who received this message don't often get email from [REDACTED] [Learn why this is important](#)

Good Afternoon,

Please see the attached letter for your records. If you have any questions, contact Alicia Bird, cc'd above.

Thank you,

*Debbie Hultman* | Assistant to the Regional Manager  
California Department of Fish and Wildlife – Bay Delta Region  
2825 Cordelia Road, Ste. 100, Fairfield, CA 94534

[REDACTED] | [REDACTED]



State of California – Natural Resources Agency

DEPARTMENT OF FISH AND WILDLIFE

Bay Delta Region

2825 Cordelia Road, Suite 100

Fairfield, CA 94534

(707) 428-2002

[www.wildlife.ca.gov](http://www.wildlife.ca.gov)

**GAVIN NEWSOM, Governor**

**CHARLTON H. BONHAM, Director**



July 13, 2022

Ms. Michelle Julene  
Regulatory Open Space Planner  
Marin County Open Space District  
|3501 Civic Center Drive, Suite 260  
San Rafael, CA 94903  
[mjulene@marincounty.org](mailto:mjulene@marincounty.org)

Subject: Memorial Trail Improvement Project, Mitigated Negative Declaration,  
SCH No. 2022060238, Marin County

Dear Ms. Julene:

The California Department of Fish and Wildlife (CDFW) received a Notice of Intent to Adopt a Mitigated Negative Declaration (MND) from Marin County Open Space District (District) for the Memorial Trail Improvement Project (Project) pursuant to the California Environmental Quality Act (CEQA) and CEQA Guidelines.<sup>1</sup>

CDFW is submitting comments on the MND to inform the District, as the Lead Agency, of potentially significant impacts to biological resources associated with the Project.

## **CDFW ROLE**

CDFW is a **Trustee Agency** with responsibility under CEQA pursuant to CEQA Guidelines section 15386 for commenting on projects that could impact fish, plant, and wildlife resources. CDFW is also considered a **Responsible Agency** if a project would require discretionary approval, such as permits issued under the California Endangered Species Act (CESA), the Lake and Streambed Alteration (LSA) Program, or other provisions of the Fish and Game Code that afford protection to the state's fish and wildlife trust resources.

## **PROJECT DESCRIPTION SUMMARY**

**Proponent:** Marin County Open Space District

**Objective:** Improve visitor access to the Terra Linda/Sleepy Hollow Open Space Preserve, reduce trail erosion and sedimentation, and reduce trail density and habitat fragmentation. Project activities include decommissioning approximately 1.77 miles of trail and implementing approximately 1.93 miles in trail improvements. Trail

---

<sup>1</sup> CEQA is codified in the California Public Resources Code in Section 21000 et seq. The "CEQA Guidelines" are found in Title 14 of the California Code of Regulations, commencing with Section 15000.

Michelle Julene, Regulatory Open Space Planner  
Marin County Open Space District  
July 13, 2022  
Page 2

improvements include 13 ephemeral stream crossings, seven would be rock armored fords and six would be bridges.

**Location:** The Project is located within an approximate 4-acre area in the southeast portion of the Terra Linda/Sleepy Hollow Open Space Preserve in the County of Marin, State of California on Assessor's Parcel Numbers 177-220-64 and 175-010-97, and centered at approximately Latitude 37.994692°N, Longitude 122.554462°W.

**Timeframe:** The Project is planned to occur over two seasons from approximately March to October. The Project implementation year is not provided.

## REGULATORY REQUIREMENTS

### Lake and Streambed Alteration

CDFW requires an LSA Notification, pursuant to Fish and Game Code section 1600 et seq., for Project activities affecting lakes or streams and associated riparian habitat. Notification is required for any activity that may substantially divert or obstruct the natural flow; change or use material from the bed, channel, or bank including associated riparian or wetland resources; or deposit or dispose of material where it may pass into a river, lake, or stream. Work within ephemeral streams, washes, watercourses with a subsurface flow, and floodplains are subject to notification requirements. **Project activities conducted within or adjacent to the ephemeral streams within the Project area would likely be subject to LSA Notification requirements as further described below.** CDFW will consider the CEQA document for the Project and may issue an LSA Agreement. CDFW may not execute the final LSA Agreement (or Incidental Take Permit (ITP)) until it has complied with CEQA as a Responsible Agency.

### California Endangered Species Act

Please be advised that a CESA ITP must be obtained if the Project has the potential to result in "take" of plants or animals listed under CESA, either during construction or over the life of the Project. **The Project has the potential to impact northern spotted owl (*Strix occidentalis caurina*), a CESA listed as threatened species, as further described below.** Issuance of an ITP is subject to CEQA documentation; the CEQA document must specify impacts, mitigation measures, and a mitigation monitoring and reporting program. If the Project will impact CESA listed species, early consultation is encouraged, as significant modification to the Project and mitigation measures may be required in order to obtain an ITP.

CEQA requires a Mandatory Finding of Significance if a project is likely to substantially restrict the range or reduce the population of a threatened or endangered species. (Pub. Resources Code, §§ 21001, subd. (c) & 21083; CEQA Guidelines, §§ 15380, 15064, & 15065). Impacts must be avoided or mitigated to less-than-significant levels unless the

Michelle Julene, Regulatory Open Space Planner  
Marin County Open Space District  
July 13, 2022  
Page 3

CEQA Lead Agency makes and supports Findings of Overriding Consideration (FOC). The CEQA Lead Agency's FOC does not eliminate the Project proponent's obligation to comply with CESA.

### **Fully Protected Species**

Fully Protected species, such as white-tailed kite (*Elanus leucurus*) and golden eagle (*Aquila chrysaetos*), may not be taken or possessed at any time (Fish & G. Code, §§ 3511, 4700, 5050, & 5515).

### **COMMENTS AND RECOMMENDATIONS**

CDFW offers the comments and recommendations below to assist the District in adequately identifying and/or mitigating the Project's significant, or potentially significant, direct and indirect impacts on fish and wildlife (biological) resources. Editorial comments or other suggestions may also be included to improve the document. Based on the Project's avoidance of significant impacts on biological resources with implementation of mitigation measures, including CDFW's below recommendations, CDFW concludes that a Mitigated Negative Declaration is appropriate for the Project.

**Mandatory Findings of Significance: Does the Project have the potential to substantially reduce the number or restrict the range of an endangered, rare, or threatened species?**

### **Environmental Setting and Mitigation Measures**

#### **Comment 1: Northern Spotted Owl, MND pages 51, 77-78 and 166**

**Issue:** The MND states that northern spotted owl (NSO) is unlikely to utilize the Project area due to habitat composition, proximity to development, and levels of public use (Page 78). However, the Project area and a 0.25-mile radius appears to consist of potentially suitable nesting habitat for NSO, including coast live oak (*Quercus agrifolia*) forest and California bay (*Umbellularia californica* var. *californica*) forest, therefore nesting NSO may occur within the Project area or a 0.25-mile radius and be disturbed (Press et al. 2010). There are California Natural Diversity Database (CNDDDB) documented NSO occurrences approximately 1.8 miles south of the Project area and 2.5 miles to the east, which are well within the dispersal distance of NSO (Hollenbeck et al. 2018) and in close proximity to development and areas of public use.

Given the potential for NSO to occur within the Project area and 0.25-mile radius, Mitigation Measure (MM) BIO-1 (Page 77-78) would likely be insufficient to detect NSO presence. Additionally, the appropriate buffer distance for NSO is 0.25 mile (1,320 feet), as noted on page 51 of the MND, and therefore 100 feet, as proposed in Best

Michelle Julene, Regulatory Open Space Planner  
Marin County Open Space District  
July 13, 2022  
Page 4

Management Practice (BMP) Special-Status Wildlife-4: Avoidance and Protection of Northern Spotted Owl (Page 166) would be insufficient to avoid potential impacts to nesting NSO if they are present. Furthermore, CDFW considers the breeding season of NSO to be until August 31, not July 31 (Page 51), as young are still dependent on their parents and do not begin to disperse until September (CDFW 2016). Therefore, the Project should consider the potential for impacts to NSO through August 31.

**Specific impacts and why they may occur and be significant:** If active NSO nests are not detected by the proposed surveys in MM BIO-1, nesting NSO could be disturbed by Project activities resulting in nest abandonment and loss of eggs or reduced health and vigor and loss of young, thereby substantially reducing the number of the species. NSO is CESA listed as a threatened species and therefore is considered to be a threatened species pursuant to CEQA Guidelines section 15380. Therefore, if an active NSO nest is disturbed by the Project, the Project may result in a substantial reduction in the number of a threatened species, which is considered to be a Mandatory Finding of Significance pursuant to CEQA Guidelines section 15065, subdivision (a)(1).

**Recommendation:** For an adequate environmental setting and to reduce impacts to NSO to less than significant, CDFW recommends that the MND include the following mitigation measure for NSO.

*MM BIO-2:* A qualified biologist shall provide an assessment of potential NSO nesting habitat within the Project area and a 0.25-mile radius and obtain CDFW's written acceptance of the assessment. Alternatively, if the assessment is not completed, or if it concludes that NSO nesting habitat is present, then no Project activities within 0.25 miles of potential NSO nesting habitat shall occur between March 15 and August 31 unless a qualified biologist approved in writing by CDFW conducts NSO surveys following the U.S. Fish and Wildlife Service (USFWS) *Protocol for Surveying Proposed Management Activities That May Impact Northern Spotted Owls*, dated (revised) January 9, 2012. Surveys shall be conducted in accordance with Section 9 of the survey protocol, *Surveys for Disturbance-Only Projects*. If breeding NSO are detected during surveys, a 0.25 mile no-disturbance buffer zone shall be implemented around the nest until the end of the breeding season, or a qualified biologist determines that the nest is no longer active, unless otherwise approved in writing by CDFW. The Project shall obtain CDFW's written acceptance of the qualified biologist and survey report prior to Project construction occurring between March 15 and August 31 each year.

Alternate buffer zones may be proposed to CDFW after conducting an auditory and visual disturbance analysis following the USFWS guidance, *Estimating the Effects of Auditory and Visual Disturbance to Northern Spotted Owls and Marbled Murrelets in Northwestern California*, dated October 1, 2020. Alternative buffers must be approved in writing by CDFW.

Michelle Julene, Regulatory Open Space Planner  
Marin County Open Space District  
July 13, 2022  
Page 5

If take of NSO cannot be avoided, the Project shall consult with CDFW pursuant to CESA and obtain an ITP, and also consult with USFWS pursuant to the federal Endangered Species Act.

**Would the Project have a substantial adverse effect, either directly or through habitat modifications, on any species identified as a candidate, sensitive, or special status species in local or regional plans, policies, or regulations, or by CDFW or USFWS?**

### **Environmental Setting and Mitigation Measures**

#### **Comment 2: Burrowing Owl, Pages 20-21, 71, 74, 76**

**Issue:** The MND identifies that western burrowing owl (*Athene cunicularia*) has been documented within the larger Terra Linda/Sleepy Hollow Open Space Preserve (Page 20), the Project area provides suitable habitat for burrowing owl, and there is the potential for burrowing owl to occur there (Page 76). The Project area is within the wintering range of burrowing owl. CDFW appreciates that surveys have been done within the preserve; however, it is unclear if any of the survey locations were within the Project area and a sufficient buffer zone to detect wintering owls that may be disturbed. Furthermore, it appears the last time surveys were conducted was March 2018 (Page 74), which may not accurately reflect current conditions and occupancy.

**Specific impacts and why they may occur and be significant:** Burrowing owl is a California Species of Special Concern (SSC) because the species' population viability and survival are adversely affected by risk factors such as precipitous declines from habitat loss, fragmentation, and degradation; evictions from nesting sites without habitat mitigation; wind turbine mortality; human disturbance; and eradication of California ground squirrels (*Spermophilus beecheyi*) resulting in a loss of suitable burrows required by burrowing owls for nesting, protection from predators, and shelter (Shuford and Gardali 2008; CDFW 2012 Staff Report; personal communication, CDFW Statewide Burrowing Owl Coordinator Esther Burkett, May 13, 2022). Preliminary analyses of regional patterns for breeding populations of burrowing owls have detected declines both locally in their central and southern coastal breeding areas, and statewide where the species has experienced breeding range retraction (CDFW 2012 Staff Report; personal communication, Esther Burkett, May 13, 2022).

Historically, the most abundant populations of burrowing owl within the San Francisco Bay Area were in Alameda, Contra Costa, and Santa Clara counties and populations were locally abundant within portions of Solano and San Mateo counties. Burrowing owls are no longer abundant and may be disappearing entirely from western Contra Costa, western Alameda, and Santa Clara counties. Breeding burrowing owls may be extirpated in Marin County, and only use the region on a limited basis in winter

Michelle Julene, Regulatory Open Space Planner  
Marin County Open Space District  
July 13, 2022  
Page 6

(Townsend and Lenihan 2007 as cited in Sheffield 2021). Habitat loss caused by development is the most immediate threat to burrowing owls in high growth areas of the San Francisco Bay Area, and loss of burrowing owl habitat will likely continue well into the future (Townsend and Lenihan 2007). As urbanization increases and local burrowing owl populations decline, they become vulnerable to stochastic events (demographic, genetic, and environmental) associated with small population size, creating the potential for an extinction “vortex” (Gilpin and Soulé 1986 as cited in Townsend and Lenihan 2007).

If wintering burrowing owls are not detected by the appropriate surveys, the Project may result in reduced health and vigor, or mortality, of owls resulting from removal of wintering burrows, or wintering burrow abandonment caused by audio and visual disturbances from Project construction activities. Burrowing owl is protected under Fish and Game Code sections 3503 and 3503.5 and the federal Migratory Bird Treaty Act. Therefore, if wintering burrowing owl occupy the Project area or adjacent habitat, Project impacts to burrowing owl would be potentially significant.

**Recommendation:** For an adequate environmental setting and to reduce impacts to wintering burrowing owl to less-than-significant, CDFW recommends that the MND include the following mitigation measure.

*MM BIO-3:* Prior to Project activities occurring during the burrowing owl wintering season from September 1 to January 31, a qualified biologist shall conduct a habitat assessment, and if warranted based on the habitat assessment, a survey pursuant to the CDFW *Staff Report on Burrowing Owl Mitigation* (CDFW 2012 Staff Report). The habitat assessment and surveys shall encompass the Project site and a sufficient buffer zone to detect owls nearby that may be impacted commensurate with the type of disturbance anticipated up to 500 meters or 1,640 feet, as outlined in the CDFW 2012 Staff Report, and include burrow surrogates such as culverts, piles of concrete or rubble, and other non-natural features, in addition to burrows and mounds. Time lapses between surveys or Project activities shall trigger subsequent surveys, as determined by a qualified biologist, including but not limited to a final survey within 24 hours prior to ground disturbance. Surveys shall occur each year of Project construction during burrowing owl wintering season if there is suitable habitat on or adjacent to the Project site (within up to 1,640 feet) where owls could be disturbed, as determined by a qualified biologist. The qualified biologist shall have a minimum of two years of experience implementing the CDFW 2012 Staff Report survey methodology resulting in detections. Detected burrowing owls shall be avoided pursuant to the buffer zone prescribed in the CDFW 2012 Staff Report unless otherwise approved in writing by CDFW, and any passive relocation plan for non-nesting owls shall be subject to CDFW review.

Please be advised that CDFW does not consider eviction of burrowing owls (i.e., passive removal of an owl from its burrow or other shelter) as a “take” avoidance,



Michelle Julene, Regulatory Open Space Planner  
Marin County Open Space District  
July 13, 2022  
Page 7

minimization, or mitigation measure; therefore, off-site habitat compensation shall be included in the eviction plan. Habitat compensation acreages shall be approved by CDFW, as the amount depends on site-specific conditions, and completed before Project construction. It shall also include placement of a conservation easement and preparation and implementation of a long-term management plan.

**Comment 3: Special-status Herpetofauna, Page 20**

**Issue:** The Project may impact the following special-status herpetofauna, which the MND identified have a low potential to occur: California giant salamander (*Dicamptodon ensatus*), foothill yellow-legged frog (*Rana boylei*) Northwest/North Coast clade, California red-legged frog (*Rana draytonii*), and western pond turtle (*Actinemys marmorata*). CNDDDB identifies occurrences of all four species within two to five miles of the Project.

The Project would impact streams and surrounding habitat that may be occupied by these species. Foothill yellow-legged frogs have been documented moving up to 500 feet from the wetted channel of a stream across upland habitat (CDFW 2018). California red-legged frogs can use upland habitat one to two miles away from breeding ponds, including habitat such as rocks, small mammal burrows, logs, densely vegetated areas, and even man-made structures (i.e., culverts, livestock troughs, spring-boxes, and abandoned sheds) (USFWS 2017). Western pond turtles can move more than four miles up or down stream; therefore, the Project area is within the mobility range of western pond turtle observations (Holland 1994). The species may also survive outside of aquatic habitat for several months in uplands up to several hundred feet from aquatic habitat (Purcell et al. 2017; Zaragoza et al. 2015).

**Specific impacts and why they may occur and be significant:** The Project could impact stream or upland dispersal habitat or refugia for special-status herpetofauna through vegetation removal and grading activities, potentially injuring or killing them. Based on the above, if these special-status herpetofauna occur within the Project area, Project impacts to special-status herpetofauna would be potentially significant.

**Recommendation:** To reduce potential impacts to less-than-significant, CDFW recommends including the following mitigation measure in the MND.

**MM BIO-4:** For all Project activities that occur within 500 feet of stream or wetland habitat, prior to ground-disturbing activities, a qualified biologist shall conduct a pre-construction survey within 48 hours prior to the start of Project activities, focusing on the presence of foothill yellow-legged frog, California red-legged frog, California giant salamander and western pond turtle and their nests. If any of these special-status species are discovered during the survey, Project activities shall not begin until CDFW has been consulted and approved in writing measures to avoid and minimize impacts to

Michelle Julene, Regulatory Open Space Planner  
Marin County Open Space District  
July 13, 2022  
Page 8

special-status species, and the measures have been implemented. If California red-legged frog is encountered, the Project shall consult with USFWS pursuant to the federal Endangered Species Act and obtain any required authorization for impacts.

If an LSA Notification is submitted for Project activities affecting streams, CDFW may include in the LSA Agreement, if issued, additional protection measures for special-status herpetofauna pending further analysis of the potential for their occurrence within the Project area.

#### **Comment 4: American Badger**

**Issue:** The Project is within the range<sup>2</sup> of the American badger (*Taxidea taxus*). The Project is located within grassland habitat and oak woodland habitat that may be suitable for American badger. Badgers range throughout most of California and can dig burrows in a single day; therefore, the species may occupy the Project site and adjacent habitat prior to Project construction (Ministry of Environment Ecosystems 2007 as cited in Brehme et al. 2015). Additionally, the California Wildlife Habitat Relationships Predicted Habitat Suitability for the grassland portions of the site is High Suitability.

**Specific impacts and why they may occur and be significant:** American badger is an SSC. The Project may result in injury or mortality to adult or young badgers, or burrow abandonment. Therefore, if American badgers are present on or adjacent to the Project area, Project impacts to American badger would be potentially significant.

**Recommendation:** For an adequate environmental setting and to reduce impacts to less-than-significant, CDFW recommends that the MND: (1) analyze the potential for American badger to occur on and adjacent to the Project area, and (2) include mitigation measures to ensure impacts are reduced to less-than-significant. These measures may include a qualified biologist surveying for the species including adjacent habitat prior to construction, avoiding occupied burrows including a sufficient buffer approved by CDFW, and preparing and implementing a CDFW-approved relocation plan if badgers are found on or adjacent to the Project site and cannot be avoided.

#### **Comment 5: Special-Status Plants (Page 19)**

**Issue:** It is unclear whether the Project could impact special-status plants. The MND states that no special-status plants are expected to occur, given negative survey results (Page 19). The MND notes that Prunuske Chatham, Inc. completed a Biological Resources Assessment (BRA) in August 2019, which included botanical surveys that were conducted in spring 2019. The BRA was not included as an appendix of the MND,

---

<sup>2</sup> The American badger range map is available at <https://nrm.dfg.ca.gov/FileHandler.ashx?DocumentID=2598&inline=1>

Michelle Julene, Regulatory Open Space Planner  
Marin County Open Space District  
July 13, 2022  
Page 9

and as such, CDFW cannot determine whether the BRA sufficiently addressed potential impacts to special-status plants.

As outlined in CDFW's *Protocol for Surveying and Evaluating Impacts to Special-Status Native Plant Populations and Sensitive Natural Communities*<sup>3</sup> failure to locate special-status plants during one field season may not adequately determine presence, and multiple years of surveys may be necessary depending on presence of adverse environmental conditions and species life history.

**Recommendation:** CDFW recommends including the BRA as an appendix to the MND and including the following mitigation measure.

*MM BIO-5:* The 2019 botanical survey report documenting absence of special-status plants within areas subject to Project direct and indirect impacts shall be provided to CDFW for written acceptance. If the survey report is not accepted in writing by CDFW, a qualified biologist shall conduct additional botanical surveys during the appropriate blooming period and conditions for all special-status plants that have the potential to occur prior to the start of construction. The survey area shall include the Project area and adjacent habitat where indirect impacts, for example hydrological modifications, may occur. More than one year of surveys may be necessary. Surveys shall be conducted following CDFW's *Protocol for Surveying and Evaluating Impacts to Special-Status Native Plant Populations and Sensitive Natural Communities* (<https://wildlife.ca.gov/Conservation/Survey-Protocols#377281280-plants>). Survey reports shall be submitted to CDFW for written approval prior to the start of construction. If any special-status plant species are observed, the Project shall fully avoid direct and indirect impacts to all individuals and prepare and implement a CDFW-approved avoidance plan prior to Project activities. If the Project cannot avoid impacts to special-status plants, the Project shall prepare and implement a CDFW-approved mitigation plan prior to project construction including: 1) compensatory habitat mitigation at a 3:1 mitigation to impact ratio, and 2) funding for management of mitigation land in perpetuity, unless otherwise approved in writing by CDFW.

**Would the Project have a substantial adverse effect on any riparian habitat or other sensitive natural community identified in local or regional plans, policies, regulations, or by CDFW or USFWS?**

### **Project Description and Environmental Setting**

**Comment 6: Lake and Streambed Alteration and Riparian Habitat, MND Pages 13, 19-20, 53, 70, 80**

---

<sup>3</sup> See: <https://wildlife.ca.gov/Conservation/Survey-Protocols#377281280-plants>

Michelle Julene, Regulatory Open Space Planner  
Marin County Open Space District  
July 13, 2022  
Page 10

**Issue:** The MND notes that “the proposed trail bridges would be located above the 100-year flood elevation spanning the banks of the ephemeral streams and would not be subject to regulatory permit authorizations.” However, bridges often cause permanent shading of the stream which may result in a substantial adverse impact to stream habitat. Additionally, the MND also notes that the concrete foundations for these bridges will be set at the top of the stream banks. Depending on site-specific characteristics—such as slope of bank and adjacent lands, location and extent of riparian vegetation, and hydrological profile—installation of these bridges may have permanent or temporary impacts to the stream and its associated ecological communities and be subject to an LSA Notification.

Additionally, the MND mentions that multiple unnamed seasonal drainages occur throughout the Project area, but it is unclear what level of impact, if any, the Project will have on these drainages and if they are different than the streams where crossings will be installed. If permanent or temporary impacts to ephemeral drainages may be substantial the impacts would be subject to an LSA Notification.

Furthermore, while the MND states that work will be restricted to the dry season to the extent feasible, it also states work will occur March – May. CDFW considers the dry season to be June 15 to October 15, and an LSA agreement would likely limit work to this window, with the possibility to extend work on a week-to-week basis if conditions remain dry, unless additional justification for working in the wet season is provided.

**Specific impacts and why they may occur and be significant:** The Project may result in permanent and temporary impacts to stream and riparian habitat. Riparian habitat is of critical importance to protecting and conserving the biotic and abiotic integrity of an entire watershed. When riparian habitat is substantially altered, riparian functions become impaired, thereby likely substantially adversely impacting aquatic and terrestrial species. Substantial removal of vegetation significantly reduces suitable nesting and roosting habitat for many bird and bat species, and causes the loss of important refugia for small mammals. Therefore, if the Project impacts stream and associated riparian habitat, impacts to these resources would be potentially significant.

**Recommendation:** For an adequate environmental setting, to comply with Fish and Game Code section 1602 et seq., and to reduce impacts to streams to less-than-significant, CDFW recommends including the following mitigation measure in the MND:

*MM BIO-5:* For Project activities that may substantially alter the bed, bank, or channel of on-site drainages or associated riparian habitat, including but not limited to bridge installation or modification, the Project shall consult with CDFW to determine if an LSA Notification is warranted, including providing CDFW with an aerial based map of aquatic features on the Project area. If CDFW determines that any of the Project impacts are subject to Fish and Game Code section 1600 et seq., the Project shall submit an LSA

Michelle Julene, Regulatory Open Space Planner  
Marin County Open Space District  
July 13, 2022  
Page 11

Notification to CDFW prior to Project construction. If CDFW determines that an LSA Agreement is warranted, the Project shall comply with all required measures in the LSA Agreement, including but not limited to requirements to mitigate impacts to the streams and riparian habitat. Permanent impacts to the stream and associated riparian habitat shall be mitigated by restoration of riparian habitat at a minimum 3:1 mitigation to impact ratio based on acreage and linear distance as close to the Project area as possible and within the same watershed and year as the impact, unless otherwise approved in writing by CDFW. Temporary impacts shall be restored on-site in the same year as the impact at a 1:1 ratio.

**Please be advised that an LSA Agreement obtained for this Project would likely require the above recommended mitigation measures, as applicable.**

### **EDITORIAL COMMENTS**

CDFW appreciates that the MND included Appendix A, which includes a list of Best Management Practices (BMP) utilized by the District as part of their Road and Trail Management Plan. However, it is not always clear which BMPs are being implemented for the Project and it appears some BMPs should be designated as enforceable mitigation measures. For clarity, CDFW recommends that BMPs being implemented for the Project that are necessary to reducing impact to less-than-significant be included as a mitigation measure in the MND.

### **ENVIRONMENTAL DATA**

CEQA requires that information developed in environmental impact reports and negative declarations be incorporated into a database which may be used to make subsequent or supplemental environmental determinations. (Pub. Resources Code, § 21003, subd. (e)). Accordingly, please report any special-status species and natural communities detected during Project surveys CNDDDB. The CNDDDB field survey form can be filled out and submitted online at the following link: <https://wildlife.ca.gov/Data/CNDDDB/Submitting-Data>. The types of information reported to CNDDDB can be found at the following link: <https://www.wildlife.ca.gov/Data/CNDDDB/Plants-and-Animals>.

### **ENVIRONMENTAL DOCUMENT FILING FEES**

The Project, as proposed, would have an impact on fish and/or wildlife, and assessment of environmental document filing fees is necessary. Fees are payable upon filing of the Notice of Determination by the Lead Agency and serve to help defray the cost of environmental review by CDFW. Payment of the environmental document filing fee is required in order for the underlying project approval to be operative, vested, and final. (Cal. Code Regs, tit. 14, § 753.5; Fish & G. Code, § 711.4; Pub. Resources Code, § 21089).


Michelle Julene, Regulatory Open Space Planner  
Marin County Open Space District  
July 13, 2022  
Page 12

## CONCLUSION

CDFW appreciates the opportunity to comment on the MND to assist the District in identifying and mitigating Project impacts on biological resources.

Questions regarding this letter or further coordination should be directed to Alicia Bird, Environmental Scientist, at [REDACTED]; or Melanie Day, Senior Environmental Scientist (Supervisory), at [REDACTED]

Sincerely,

DocuSigned by:  
  
Erin Chappell  
B77E9A6211EF486  
Erin Chappell  
Regional Manager  
Bay Delta Region

ec: Office of Planning and Research, State Clearinghouse (SCH No. 2022060238)

Jason Hoorn, Natural Resources Planner, Marin County, [JHoorn@marincounty.org](mailto:JHoorn@marincounty.org)

## REFERENCES

Brehme, C.S.; Hathaway, S.A.; Booth, R.; Smith, B.H.; and Fisher, R.N. 2015. Research of American Badgers in Western San Diego County, 2014. Data Summary prepared for California Department of Fish and Wildlife and the San Diego Association of Governments. 24pp. (42pp. with Appendix).

CDFW. 2016. A Status Review of the Northern Spotted Owl (*Strix occidentalis caurina*) in California. Report to the Fish and Game Commission.  
<https://nrm.dfg.ca.gov/FileHandler.ashx?DocumentID=116307&inline>

CDFW. 2018. Considerations for Conserving the Foothill Yellow-Legged Frog.  
<https://nrm.dfg.ca.gov/FileHandler.ashx?DocumentID=157562&inline>

Holland, Dan C. 1994. The western pond turtle: habitat and history. Unpublished final report, U. S. Dept. of Energy, Portland, Oregon.

Jeff P. Hollenbeck, Susan M. Haig, Eric D. Forsman, J. David Wiens, Geographic variation in natal dispersal of Northern Spotted Owls over 28 years, *The Condor*, Volume 120, Issue 3, 1 August 2018, Pages 530–542,  
<https://doi.org/10.1650/CONDOR-17-164.1>

Michelle Julene, Regulatory Open Space Planner  
Marin County Open Space District  
July 13, 2022  
Page 13

Press, D., D. Adams, H. Jensen, K. Fehring, W. Merkle, M. Koenen, and L. A. Starcevich. 2010. San Francisco Bay Area Network northern spotted owl monitoring protocol: Version 6.4. Natural Resource Report NPS/SFAN/NRR—2010/245. National Park Service, Fort Collins, Colorado.

Purcell, Kathryn L.; McGregor, Eric L.; Calderala, Kathryn. 2017. Effects of drought on western pond turtle survival and movement patterns. *Journal of Fish and Wildlife Management*. 8(1): 15-27.

Sheffield, S. 2021. Population Dynamics and Conservation of the Western Burrowing Owl (*Athene cunicularia hypugaea*) in the United States and Canada: a 20-year update. Volume 29.

Shuford, W. D., and Gardali, T., editors. 2008. California Bird Species of Special Concern: A ranked assessment of species, subspecies, and distinct populations of birds of immediate conservation concern in California. *Studies of Western Birds* 1. Western Field Ornithologists, Camarillo, California, and California Department of Fish and Game, Sacramento.

Townsend, S.E. and C. Lenihan. 2007. Burrowing Owl status in the greater San Francisco Bay Area. *Proceedings of the Burrowing Owl Symposium* 60-69. The Institute for Bird Populations 2007.

USFWS. 2017. Species Account for California Red-legged frog. December 2017. [https://www.fws.gov/sacramento/es\\_species/Accounts/Amphibians-Reptiles/ca\\_red\\_legged\\_frog/](https://www.fws.gov/sacramento/es_species/Accounts/Amphibians-Reptiles/ca_red_legged_frog/)

Zaragoza, George; Rose, Jonathan P.; Purcell, Kathryn.; Todd, Brian. 2015. Terrestrial habitat use by western pond turtles (*Actinemys marmorata*) in the Sierra Foothills. *Journal of Herpetology*. 49(3): 437-441.

**From:** [REDACTED]  
**To:** [Passantino, Rosemary](#); [Campo, Jon](#); [Julene, Michelle](#); [Hoorn, Jason](#)  
**Subject:** Re: IS/MND Public Comments Memorial Trail - Craig Ross  
**Date:** Monday, June 13, 2022 9:28:47 AM

---



## IS/MND Public Comments Memorial Trail

|          |  |
|----------|--|
| Name     | Craig Ross   |
| Email    | [REDACTED]   |
| Zipcode  | 94903  |
| Comments | Creating more access for bikes is a positive! Marin is severely lacking enough trails for this growing population of outdoor enthusiasts. Living in the Terra Linda neighborhood, I am very excited about this multi use trail. I can only hope that construction of this trail will lead to more opportunities for mountain bikes, as trail access is severely limited... Given mostly to the efforts of a handful of entitled and selfish few. |

You can [edit this submission](#) and [view all your submissions](#) easily.



**From:** [REDACTED]  
**To:** [Passantino, Rosemary](#); [Campo, Jon](#); [Julene, Michelle](#); [Hoorn, Jason](#)  
**Subject:** Re: IS/MND Public Comments Memorial Trail - Craig Ross  
**Date:** Wednesday, July 13, 2022 2:39:30 PM

---



## IS/MND Public Comments Memorial Trail

|          |  |
|----------|--|
| Name     | Craig Ross   |
| Email    | [REDACTED]   |
| Zipcode  | 94903  |
| Comments | I can't think of a better use of funding than for creating this trail. Multi use, however, is key. With the growing population of cyclists, there needs need to be taken into consideration. I've lived in Terralinda for over 15 years and I am an avid mountain biker, hiker, and trail runner. Honestly, I don't ride horses, so I'm indifferent to whether or not you allow them on this trail. But for the sake of the Terralinda community, including a grown population of school-aged children and adolescents, this project needs to be completed in a reasonable, if not expedited, manner |

You can [edit this submission](#) and [view all your submissions](#) easily.

**From:** [REDACTED]  
**To:** [Passantino, Rosemary](#); [Campo, Jon](#); [Julene, Michelle](#); [Hoorn, Jason](#)  
**Subject:** Re: IS/MND Public Comments Memorial Trail - john cheetham  
**Date:** Monday, June 13, 2022 8:14:08 PM

---



## IS/MND Public Comments Memorial Trail

|          |  |
|----------|--|
| Name     | john cheetham  |
| Email    | [REDACTED]   |
| Zipcode  | 94903  |
| Comments | <p>Hi, I am very much in favor of the proposed Memorial Trail upgrades. As the incoming head coach of the Terra Linda High Mountain Bike Club, having a safe, legal, close-to-school trail to ride, especially in the winter months, would be fantastic and help us keep mountain biking more accessible and inclusive to our entire span of abilities within the team.</p> <p>It would also dramatically improve access to Ridgewood Fire Road for students at TLHS and the neighborhoods on Elizabeth Drive and Sun Valley. We would be excited to volunteer in the construction as well as part of our commitment to Teen Trail Corps volunteer hours.</p> <p>Please keep me in the loop!</p> |

You can [edit this submission](#) and [view all your submissions](#) easily.

**From:** [REDACTED]  
**To:** [Passantino, Rosemary](#); [Campo, Jon](#); [Julene, Michelle](#); [Hoorn, Jason](#)  
**Subject:** Re: IS/MND Public Comments Memorial Trail - Robin Pendoley  
**Date:** Monday, June 13, 2022 10:59:34 PM

---



## IS/MND Public Comments Memorial Trail

|          |  |
|----------|--|
| Name     | Robin Pendoley   |
| Email    | [REDACTED]   |
| Zipcode  | 94903  |
| Comments | <p>To Whom It May Concern;</p> <p>I submit this comment to offer strong support to the planned Memorial Trail Improvement Project as a means of reducing the community's impact on the environment. I have used the existing Memorial Trail for over 30 years as a hiker, runner, and as a former coach of distance runners at Terra Linda High School.</p> <p>While the design of the trail improvements rightly aim to mitigate the current negative impacts on the natural environment from the various social trails and the poorly designed Memorial Trail ascending to the ridge, I wanted to emphasize how the trail improvements are likely to reduce carbon emissions. As a former Terra Linda High School athlete and coach, I can attest to the fact that the distance runners during both the fall Cross Country and spring Track seasons run on trails at least 4 days per week. While the Memorial Trail has met this need on occasion, the teams often elect to drive to China Camp, Phoenix Lake, or even Bon Tempe and Lagunitas Lakes to access trails that are more suitable for high school runners. As a result for 2/3 of each school year, anywhere from 3 to 6 car loads of athletes leave Terra Linda High School and drive from 5 to 15 miles to access high quality trails. The proposed improvements to the Memorial Trail will dramatically reduce the grade and improve the footing on the trail, making it and the extensive trail system on top of the ridge accessible to the athletes without the need for vehicles. This will produce a significant environmental benefit by reducing greenhouse gas emissions.</p> |

Additionally, it is worth noting that this project will provide the increasingly diverse student body of Terra Linda High School access to open space to enrich classes across the curriculum. As a coach and educator, I can attest that my students often shared that their time as runners or classes that included activities on trails were their first exposure to trails in Marin. They noted how this exposure sparked a passion for open space and exploring the natural environment. With 1,247 students, nearly 60% identifying as BIPOC youth, and 37.7% qualifying for Free and Reduced Lunch, this is an excellent opportunity to provide equitable access and exposure to Marin's natural beauty. Such exposure can have lasting positive environmental impacts through the raised consciousness of the need to protect the wild lands.

Thank you,  
Robin Pendoley

You can [edit this submission](#) and [view all your submissions](#) easily.

**From:** [REDACTED]  
**To:** [Passantino, Rosemary](#); [Campo, Jon](#); [Julene, Michelle](#); [Hoorn, Jason](#)  
**Subject:** Re: IS/MND Public Comments Memorial Trail - Grace Kredo-Brown  
**Date:** Tuesday, June 14, 2022 1:19:26 PM

---



## IS/MND Public Comments Memorial Trail

|          |  |
|----------|--|
| Name     | Grace Kredo-Brown  |
| Email    | [REDACTED]   |
| Zipcode  | 94903  |
| Comments | The current state of the trail is too steep and eroded to be beneficial to the people using it and the environment. It is in a state that is not easy to use and seems disruptive of the habitat of the creatures there. I'm in support of having a new multi use trail there. |

You can [edit this submission](#) and [view all your submissions](#) easily.

# Master Response 1

**From:** [REDACTED] Warren Lanier  
**To:** [Julene, Michelle](#)  
**Cc:** [Hoorn, Jason](#); [Campo, Jon](#)  
**Subject:** Re: Memorial Trail Improvement Project: CEQA Document Public Review and Comment Period Starts Today  
**Date:** Tuesday, June 14, 2022 7:50:44 AM

---

Progress continues! Thank you for the update. Still very excited for this project and the impact it will have on the TL students.

Thank you for all of your efforts on this.

Best,

w

On Mon, Jun 13, 2022, 9:00 AM Julene, Michelle <[MJulene@marincounty.org](mailto:MJulene@marincounty.org)> wrote:

Greetings!

The Marin County Open Space District (MCOSD) has prepared an Initial Study/Proposed Mitigated Declaration (IS/MND) to comply with the California Environmental Quality Act (CEQA) for the proposed Memorial Trail Improvement Project. This email transmits the Notice of Intent to Adopt an MND (NOI), which is the legal document that initiates the public review period on the IS/MND.

**The public review and comment period is June 13 – July 15, 2022 at 5:00pm.**

The document and the online comment form is available for review on the Marin County Parks website at: <https://www.parks.marincounty.org/projectsplans/road-and-trail-management/memorial-trail-terra-linda>

Comments can be submitted online using the online comment form using the link provided above, by email, or USPS as follows:

Jason Hoorn, Natural Resources Coordinator; [jhoorn@marincounty.org](mailto:jhoorn@marincounty.org)

Marin County Open Space District; 3501 Civic Center Drive, Suite 260; San Rafael, CA 94903

If you have any questions or need more information, please contact Jason Hoorn at [jhoorn@marincounty.org](mailto:jhoorn@marincounty.org).

Thank you ~ Michelle



**Michelle Julene**

# Master Response 1

**From:** [Redacted]  
**To:** [Passantino, Rosemary](#); [Campo, Jon](#); [Julene, Michelle](#); [Hoorn, Jason](#)  
**Subject:** Re: IS/MND Public Comments Memorial Trail - Gavin Blair  
**Date:** Tuesday, June 21, 2022 11:03:38 AM

---



## IS/MND Public Comments Memorial Trail

|          |  |
|----------|--|
| Name     | Gavin Blair  |
| Email    | [Redacted]   |
| Zipcode  | 94903  |
| Comments | <p>The restoration of this trail is import as it allows for greater use for hikers, bikers, and those TL High School students who can have easier access when going to school plus it would be of use to the High School sports team such as cross country.</p> <p>Making a reduced grade and more viable trail benefits and serves the community in so many ways and is an excellent use of public funds where a true difference is being made.</p> |

You can [edit this submission](#) and [view all your submissions](#) easily.

**From:** [REDACTED]  
**To:** [Passantino, Rosemary](#); [Campo, Jon](#); [Julene, Michelle](#); [Hoorn, Jason](#)  
**Subject:** Re: IS/MND Public Comments Memorial Trail - Jane Jaroszewski  
**Date:** Tuesday, June 21, 2022 5:53:47 PM

---



## IS/MND Public Comments Memorial Trail

|          |   |
|----------|---|
| Name     | Jane Jaroszewski  |
| Email    | [REDACTED]  |
| Zipcode  | 94903   |
| Comments | <p>As avid hikers, bikers, and runners, we support the proposed Memorial Trail Project. We also have a student at TLHS and the trail will provide access for them to run and bike after school. I distinctly remember coming to Terra Linda (from Walnut Creek) to run a high school cross country meet in the 1980's. The hills were so green and beautiful and I told myself I wanted to live here one day. Our open spaces are incredibly special and our community appreciates the accessibility and maintenance of the trails. My kids have such an appreciation of nature due to their ability to hike and bike locally - we regularly use the Ponti Ridge Trail and the trails near our house on Las Gallinas. We wholeheartedly support the Memorial Trail Project and will be thrilled to see the local students biking and running after school without having to drive. Thank you so much!!!</p> |

You can [edit this submission](#) and [view all your submissions](#) easily.



**From:** [REDACTED]  
**To:** [Passantino, Rosemary](#); [Campo, Jon](#); [Julene, Michelle](#); [Hoorn, Jason](#)  
**Subject:** Re: IS/MND Public Comments Memorial Trail - Karen Madden`  
**Date:** Tuesday, June 21, 2022 4:11:29 PM

---



## IS/MND Public Comments Memorial Trail

|          |  |
|----------|--|
| Name     | Karen Madden`  |
| Email    | [REDACTED]   |
| Zipcode  | 94903  |
| Comments | <p>I am a resident of Marinwood and have benefitted greatly from the improvements to the Ponti Ridge Trail. I am a consistent walker of the trail and I am pleased to report that bikers and hikers are able to use this wonderful trail in harmony. I am excited about the potential improvements to the Memorial Trail behind TLHS, and I am in favor of Marin County Parks moving forward with taking on this project improvement. The students of TLHS will greatly benefit from having close access to a multi-use trail that is graded at a level that is more appropriate. In addition, by improving this trail, students on the Cross Country and Mountain Biking team will not have to drive to places in order to train. This is a key benefit. The hills of Terra Linda are alive with hikers, bikers, and even goats- it truly is a beautiful sight. The more trails we can add to the already wonderful network, the better. Thank you, Marin County Parks, for all the work you had done, and my family and I wholeheartedly support you in continuing you endeavors, starting with the Memorial Trail project.</p> <p>Thank you,<br/>Karen Madden</p> |

You can [edit this submission](#) and [view all your submissions](#) easily.

# Master Response 1

**From:** [REDACTED]  
**To:** [Passantino, Rosemary](#); [Campo, Jon](#); [Julene, Michelle](#); [Hoorn, Jason](#)  
**Subject:** Re: IS/MND Public Comments Memorial Trail - Paul McDermott  
**Date:** Tuesday, June 21, 2022 4:35:44 PM

---



## IS/MND Public Comments Memorial Trail

|          |   |
|----------|---|
| Name     | Paul McDermott  |
| Email    | [REDACTED]  |
| Zipcode  | 94903   |
| Comments | <p>Yeah for Marin county!!! Let's continue to make the county accessible for all types of outdoor activities. Connecting existing trails with new ones, and making the existing trails (steep fire roads) easier for all types of use is what makes this county so special. I am 100% behind this.</p> <p>Considering how amazing Ponti Trail is I can't wait for the future. My Son will be at TL High in 2 years and enjoys Mtn Biking and Running and having this trail more accessible is a win for everyone. Even if it isn't done by then future residents will be able to enjoy for years to come!</p> |

You can [edit this submission](#) and [view all your submissions](#) easily.

# Master Response 1

**From:** [REDACTED]  
**To:** [Julene, Michelle](#); [Julene, Michelle](#)  
**Cc:** [Hoorn, Jason](#); [Campo, Jon](#)  
**Subject:** Re: Memorial Trail Improvement Project: CEQA Document Public Review and Comment Period Starts Today  
**Date:** Thursday, June 23, 2022 2:58:47 PM

---

Thanks very much for this information, Michelle. We'll make sure to get the word out.

Regards,  
Kim Keith-Brown

On Monday, June 13, 2022, 9:02:26 AM PDT, Julene, Michelle <[mjulene@marincounty.org](mailto:mjulene@marincounty.org)> wrote:

Greetings!

The Marin County Open Space District (MCOSD) has prepared an Initial Study/Proposed Mitigated Declaration (IS/MND) to comply with the California Environmental Quality Act (CEQA) for the proposed Memorial Trail Improvement Project. This email transmits the Notice of Intent to Adopt an MND (NOI), which is the legal document that initiates the public review period on the IS/MND.

**The public review and comment period is June 13 – July 15, 2022 at 5:00pm.**

The document and the online comment form is available for review on the Marin County Parks website at: <https://www.parks.marincounty.org/projectsplans/road-and-trail-management/memorial-trail-terra-linda>

Comments can be submitted online using the online comment form using the link provided above, by email, or USPS as follows:

Jason Hoorn, Natural Resources Coordinator; [jhoorn@marincounty.org](mailto:jhoorn@marincounty.org)

Marin County Open Space District; 3501 Civic Center Drive, Suite 260; San Rafael, CA 94903

If you have any questions or need more information, please contact Jason Hoorn at [jhoorn@marincounty.org](mailto:jhoorn@marincounty.org).

Thank you ~ Michelle



**Michelle Julene**

Regulatory Open Space Planner

[MJulene@marincounty.org](mailto:MJulene@marincounty.org)

**Marin County Parks & Open Space District**

3501 Civic Center Drive, Suite 260

# Master Response 1

**From:** [REDACTED]  
**To:** [Passantino, Rosemary](#); [Campo, Jon](#); [Julene, Michelle](#); [Hoorn, Jason](#)  
**Subject:** Re: IS/MND Public Comments Memorial Trail - Jason Matthies  
**Date:** Monday, June 27, 2022 2:27:58 PM

---



## IS/MND Public Comments Memorial Trail

|          |   |
|----------|---|
| Name     | Jason Matthies  |
| Email    | [REDACTED]  |
| Zipcode  | 94903   |
| Comments | <p>Hello, My family and I are in complete support of the proposed Memorial Trail connecting the area behind TLHS to Ridgewood Fire Road.</p> <p>This important new trail would provide much needed trail access not only for TLHS athletes but for local hikers, runners, cyclist and equestrians looking for safe purpose built trail routes to and from Ridgewood Fire Road from the San Rafael, Sun Valley, TL, Marinwood and Lucas Valley neighborhoods. Please feel free to call or email me with questions.</p> <p>Thank you. -Jason Matthies. [REDACTED]</p> |

You can [edit this submission](#) and [view all your submissions](#) easily.

**From:** [REDACTED]  
**To:** [Passantino, Rosemary](#); [Campo, Jon](#); [Julene, Michelle](#); [Hoorn, Jason](#)  
**Subject:** Re: IS/MND Public Comments Memorial Trail - Galen Pewtherer  
**Date:** Tuesday, June 28, 2022 10:28:06 AM

---



## IS/MND Public Comments Memorial Trail

|          |   |
|----------|---|
| Name     | Galen Pewtherer   |
| Email    | [REDACTED]  |
| Zipcode  | 94960   |
| Comments | <p>I'm writing to express my support for this project; the current fire road is incredibly steep and makes access to the ridge very difficult for many folks, the proposed trail will address this.</p> <p>It has the additional benefit of providing trail access to Terra Linda HS cross-country and MTB teams without having to travel on paved roads with cars.</p> |

You can [edit this submission](#) and [view all your submissions](#) easily.

**From:** [REDACTED]  
**To:** [Passantino, Rosemary](#); [Campo, Jon](#); [Julene, Michelle](#); [Hoorn, Jason](#)  
**Subject:** Re: IS/MND Public Comments Memorial Trail - Joshua Brown  
**Date:** Tuesday, June 28, 2022 7:58:55 AM

---



## IS/MND Public Comments Memorial Trail

|          |  |
|----------|--|
| Name     | Joshua Brown   |
| Email    | [REDACTED]   |
| Zipcode  | 94903  |
| Comments | <p>Memorial Trail Public Comment</p> <p>My brief comment is broad and energetic support for this multi-use trail that is a few short blocks from the Terra Linda High School (TLHS) user group. ~ Joshua Brown 2019-2022 Head Coach TLHS Mountain Bike Team</p> <p>My longer comment on this trail is layered. The existing trail is unusable in its current damaged condition. A repair and realignment of a multi-use trail has the potential to provide access to open space to an energetic user group. TLHS represents a diverse community and a tremendous pool of resources. With the Marin School of Environmental Leadership embedded in the school this trail represents ongoing academic content and volunteer integration opportunities. For athletic programs such as cross country, track &amp; cycling, this represents equitable access to a trail that does not require carpooling to distant locations, nor would it required advanced levels of experience to succeed in climbing. For those worried about shared aspects with youth on bikes, please know that the first lessons we teach our student and adult volunteers are trail etiquette and safety. The next lessons are centered around Inclusivity, Equity, Respect, Community and Fun. I remain enthusiastic and supportive of the proposed project for not a single purpose, but for the broad benefits of trail access for this diverse community in Marin.</p> <p>Sincerely – ~ Joshua Brown 2019-2022 Head Coach TLHS Mountain Bike Team</p> |

**From:** [REDACTED]  
**To:** [Passantino, Rosemary](#); [Campo, Jon](#); [Julene, Michelle](#); [Hoorn, Jason](#)  
**Subject:** Re: IS/MND Public Comments Memorial Trail - Anthony Craig  
**Date:** Wednesday, June 29, 2022 7:45:54 AM

---



## IS/MND Public Comments Memorial Trail

|          |   |
|----------|---|
| Name     | Anthony Craig   |
| Email    | [REDACTED]  |
| Zipcode  | 94960   |
| Comments | <p>To Whom It May Concern,</p> <p>I am in favor of the Memorial Trail Project as it would provide access to bikes at a slope manageable for children. The existing trail is much too steep and discouraging to younger kids.</p> <p>Other benefits include:</p> <ol style="list-style-type: none"><li>1. TLHS Track team would not have to drive to off site locations to train.</li><li>2. TLHS Mt. Bike team would not have to ride on city streets to access open space.</li><li>3. TLHS is one of the few high schools in Marin without access to good open space trails.</li><li>4. The trail will be more accessible for more people due to reduced trail grades. Current trail grades are over 30%, new trail would be about 7%.</li><li>5. New trail would allow for multiuse.</li></ol> <p>Thank you for your consideration,</p> <p>Anthony J. Craig</p> |

You can [edit this submission](#) and [view all your submissions](#) easily.

# Master Response 1

**From:** [REDACTED]  
**To:** [Passantino, Rosemary](#); [Campo, Jon](#); [Julene, Michelle](#); [Hoorn, Jason](#)  
**Subject:** Re: IS/MND Public Comments Memorial Trail - Chris Hagan  
**Date:** Wednesday, June 29, 2022 9:13:10 AM

---



## IS/MND Public Comments Memorial Trail

|          |   |
|----------|---|
| Name     | Chris Hagan   |
| Email    | [REDACTED]  |
| Zipcode  | 94960   |
| Comments | Please move ahead with the Memorial Trail project.<br>The safety and health benefits for the community resulting from this work are immeasurable! |

You can [edit this submission](#) and [view all your submissions](#) easily.



**From:** [REDACTED]  
**To:** [Passantino, Rosemary](#); [Campo, Jon](#); [Julene, Michelle](#); [Hoorn, Jason](#)  
**Subject:** Re: IS/MND Public Comments Memorial Trail - Ian Fein  
**Date:** Wednesday, June 29, 2022 7:08:53 PM

---



## IS/MND Public Comments Memorial Trail

|          |   |
|----------|---|
| Name     | Ian Fein  |
| Email    | [REDACTED]  |
| Zipcode  | 94903   |
| Comments | I strongly support this Memorial Trail Improvement Project. I am a TLHS alum, and a current resident who mountain bikes frequently, and can say that this trail would be a great asset for the community and the high school students in particular. That ridge is lacking in good routes up. (Much like Big Rock Ridge was lacking before Ponti.) I am a strong supporter of this. |

You can [edit this submission](#) and [view all your submissions](#) easily.

# Master Response 1

**From:** [REDACTED]  
**To:** [Passantino, Rosemary](#); [Campo, Jon](#); [Julene, Michelle](#); [Hoorn, Jason](#)  
**Subject:** Re: IS/MND Public Comments Memorial Trail - Matthew Park  
**Date:** Wednesday, June 29, 2022 9:09:32 AM

---



## IS/MND Public Comments Memorial Trail

|          |   |
|----------|---|
| Name     | Matthew Park  |
| Email    | [REDACTED]  |
| Zipcode  | 94925   |
| Comments | Really, really hope Marin can differentiate itself as a progressive, mountain biking friendly community. After all this is the birthplace of the sport! TY! |

You can [edit this submission](#) and [view all your submissions](#) easily.

# Master Response 1

**From:** [REDACTED]  
**To:** [Passantino, Rosemary](#); [Campo, Jon](#); [Julene, Michelle](#); [Hoorn, Jason](#)  
**Subject:** Re: IS/MND Public Comments Memorial Trail - Paul Jauregui  
**Date:** Wednesday, June 29, 2022 7:07:35 AM

---



## IS/MND Public Comments Memorial Trail

|          |  |
|----------|--|
| Name     | Paul Jauregui  |
| Email    | [REDACTED]   |
| Zipcode  | 94930  |
| Comments | I support this project as it provides more equitable access to cyclists, equestrians, and hikers. This will also help Terra Linda High School students to not have to drive to offsite locations to train. |

You can [edit this submission](#) and [view all your submissions](#) easily.

# Master Response 1

**From:** [REDACTED]  
**To:** [Passantino, Rosemary](#); [Campo, Jon](#); [Julene, Michelle](#); [Hoorn, Jason](#)  
**Subject:** Re: IS/MND Public Comments Memorial Trail - Jason Montour  
**Date:** Thursday, June 30, 2022 8:45:10 PM

---



## IS/MND Public Comments Memorial Trail

|          |  |
|----------|--|
| Name     | Jason Montour  |
| Email    | [REDACTED]   |
| Zipcode  | 94903  |
| Comments | After the wonderful completion of the Ponti trail, I wholeheartedly support the trail improvement here. Jon and his team do a great job balancing the open space to improve accessibility. The more people out there, the more we can preserve our wonderful county. |

You can [edit this submission](#) and [view all your submissions](#) easily.

# Master Response 1

**From:** [REDACTED]  
**To:** [Passantino, Rosemary](#); [Campo, Jon](#); [Julene, Michelle](#); [Hoorn, Jason](#)  
**Subject:** Re: IS/MND Public Comments Memorial Trail - Eric Bridges  
**Date:** Friday, July 01, 2022 10:51:35 AM

---



## IS/MND Public Comments Memorial Trail

|          |   |
|----------|---|
| Name     | Eric Bridges  |
| Email    | [REDACTED]  |
| Zipcode  | 94903   |
| Comments | I want to express my support for this project. As a resident of the Los Ranchitos neighborhood, I welcome improvements to the trailhead on Oak Ridge Road. Unlike some of my neighbors I have little to no concern about increased traffic on Circle Road or Oak Ridge Road. I also welcome improvements to Memorial Trail which is currently very challenging to navigate. Thank you for improving our public lands and equitable access to them for everyone. |

You can [edit this submission](#) and [view all your submissions](#) easily.

# Master Response 1

**From:** [REDACTED]  
**To:** [Passantino, Rosemary](#); [Campo, Jon](#); [Julene, Michelle](#); [Hoorn, Jason](#)  
**Subject:** Re: IS/MND Public Comments Memorial Trail - SCOTT MURRAY  
**Date:** Friday, July 01, 2022 7:31:26 AM

---



## IS/MND Public Comments Memorial Trail

|          |   |
|----------|---|
| Name     | SCOTT MURRAY  |
| Email    | [REDACTED]  |
| Zipcode  | 94930   |
| Comments | <p>This is a fantastic project that will add so much to the local area. Please, please build this and other trails in the county. Thank you for the forward thinking and making Marin's open space more accessible to all.</p> <p>Cheers,<br/>Scott</p> |

You can [edit this submission](#) and [view all your submissions](#) easily.

# Master Response 1

**From:** [REDACTED]  
**To:** [Passantino, Rosemary](#); [Campo, Jon](#); [Julene, Michelle](#); [Hoorn, Jason](#)  
**Subject:** Re: IS/MND Public Comments Memorial Trail - Sean O'Donnell  
**Date:** Saturday, July 02, 2022 12:50:49 PM

---



## IS/MND Public Comments Memorial Trail

|          |  |
|----------|--|
| Name     | Sean O'Donnell   |
| Email    | [REDACTED]   |
| Zipcode  | 94903  |
| Comments | <p>Growing up in Terra Linda and now having my own family here, we frequently hike in this area. We would strongly back any trail improvements and would volunteer to help build. Please make this happen.</p> <p>Thank you!</p> |

You can [edit this submission](#) and [view all your submissions](#) easily.

# Master Response 1

**From:** [REDACTED]  
**To:** [Passantino, Rosemary](#); [Campo, Jon](#); [Julene, Michelle](#); [Hoorn, Jason](#)  
**Subject:** Re: IS/MND Public Comments Memorial Trail - Britt Parawell  
**Date:** Sunday, July 03, 2022 11:26:48 AM

---



## IS/MND Public Comments Memorial Trail

|          |   |
|----------|---|
| Name     | Britt Parawell  |
| Email    | [REDACTED]  |
| Zipcode  | 94903   |
| Comments | I would love to have this officially designated as a trail head. I live in los Ranchitos and have for 23 years. My wife grew up here and we also have family living in the neighborhood. We have used this trail head for many years and I would love to see it get a little attention and official status. I don't think it will disrupt the neighborhood and would be a plus to the people who live in this neighborhood. |

You can [edit this submission](#) and [view all your submissions](#) easily.



# Master Response 1

**From:** [REDACTED]  
**To:** [Passantino, Rosemary](#); [Campo, Jon](#); [Julene, Michelle](#); [Hoorn, Jason](#)  
**Subject:** Re: IS/MND Public Comments Memorial Trail - Kimberleigh Cox  
**Date:** Friday, July 01, 2022 12:05:06 PM

---



## IS/MND Public Comments Memorial Trail

|          |  |
|----------|--|
| Name     | Kimberleigh Cox  |
| Email    | [REDACTED]   |
| Zipcode  | 94903  |
| Comments | <p>I'm writing in support of the Memorial Trail to improve access and safety for students and the general public. This is a much needed trail and would drastically improve the quality of outdoor experience for those in this area. The Ponte fire road in Marinwood has positively impacted the community by getting far more people out on the trails and improving the connections to other open space. We bought in Marinwood 14 years ago but since the opening of Ponte down the street from us, everyone is more active and it has improved the value of our living experience here. We hope that Memorial trail can be an improvement for the community near TLHS.</p> |

You can [edit this submission](#) and [view all your submissions](#) easily.

# Master Response 1

**From:** [REDACTED]  
**To:** [Passantino, Rosemary](#); [Campo, Jon](#); [Julene, Michelle](#); [Hoorn, Jason](#)  
**Subject:** Re: IS/MND Public Comments Memorial Trail - Naveen Kumar  
**Date:** Tuesday, July 05, 2022 2:46:08 PM

---



## IS/MND Public Comments Memorial Trail

|          |  |
|----------|--|
| Name     | Naveen Kumar   |
| Email    | [REDACTED]   |
| Zipcode  | 94903  |
| Comments | I fully support this project as it will be great for our neighborhood as well as safer for our children.<br>Thank you for making our open space more accessible! |

You can [edit this submission](#) and [view all your submissions](#) easily.

# Master Response 1

**From:** [REDACTED]  
**To:** [Passantino, Rosemary](#); [Campo, Jon](#); [Julene, Michelle](#); [Hoorn, Jason](#)  
**Subject:** Re: IS/MND Public Comments Memorial Trail - Sonya Kumar  
**Date:** Tuesday, July 05, 2022 2:52:08 PM

---



## IS/MND Public Comments Memorial Trail

|          |  |
|----------|--|
| Name     | Sonya Kumar  |
| Email    | [REDACTED]   |
| Zipcode  | 94903  |
| Comments | I support this project. As a wildlife biologist and ecologist I feel that this will help improve the habitat and open space for our unique Marin flora and fauna. In addition it will be really beneficial for our community and our children. Our high school mountain bikers will be able to reach more trails without having to go on roads with cars and our kids will have more access to hiking and outdoor areas. |

You can [edit this submission](#) and [view all your submissions](#) easily.

**From:** [Redacted]  
**To:** [Passantino, Rosemary](#); [Campo, Jon](#); [Julene, Michelle](#); [Hoorn, Jason](#)  
**Subject:** Re: IS/MND Public Comments Memorial Trail - Vivicka Parawell  
**Date:** Tuesday, July 05, 2022 9:23:33 AM

---



**IS/MND Public Comments Memorial Trail**

|          |  |
|----------|--|
| Name     | Vivicka Parawell   |
| Email    | [Redacted]   |
| Zipcode  | 94903  |
| Comments | <p>Hello -</p> <p>I am writing to let you know that I am a resident of the los ranchitos neighborhood, living at [Redacted] Oak view Dr. I fully support adding the trail at ridgewood for equestrian and people access to The Terra linda sleepy Hollow divide trails. I believe such access is important for the los ranchitos community And will be an asset in the long run. I think the public access is important for Marin county trails as a whole.</p> <p>Sincerely,<br/>Vivicka Parawell</p> |

You can [edit this submission](#) and [view all your submissions](#) easily.

**From:** [REDACTED]  
**To:** [Passantino, Rosemary](#); [Campo, Jon](#); [Julene, Michelle](#); [Hoorn, Jason](#)  
**Subject:** Re: IS/MND Public Comments Memorial Trail - Warren Lanier  
**Date:** Tuesday, July 05, 2022 10:07:28 AM

---



**IS/MND Public Comments Memorial Trail**

|          |  |
|----------|--|
| Name     | Warren Lanier  |
| Email    | [REDACTED]   |
| Zipcode  | 94903  |
| Comments | <p>This is a tremendous project and the proposed trail route and features are really top notch. The Open Space trail team has put together a wonderful solution to a mostly useless fall line trail that was eroding the hillside and not serving the local community.</p> <p>The proposed multi-use path is not only beautiful, but is a big big step in solving a decades long trail access issue for the Terra Linda community, especially for Terra Linda High School students. For too long our students have studied and played in the shadow of our beautiful hills with no local access to the trail systems right in their backyard.</p> <p>Our ever growing and constantly diversifying school community deserves easy and accessible entrance to the trail systems of Marin. With the proposed trail our PE programs will be able to begin highlighting the importance of exercise in the natural setting. Further, all of our sports programs will have a safe and healthy place to train. Fewer sidewalks and cars.</p> <p>As the TLHS Cross Country and Track and Field coach, I can say that my athletes will be using this new trail every week, if not almost everyday. For years we have been required to either risk injury running on pavement and concrete or we've have to schlep 30-50 students out to far flung trailheads. With the new and improved Memorial Trail we will have access to many more soft surface running options directly from school. No cars, drivers licenses, or gas money needed. This is a huge deal for us!</p> |

Thank you to the Open Space team and to the many community members who have been involved to this point, crafting a wonderful community asset. I can't wait for this project to be completed!

You can [edit this submission](#) and [view all your submissions](#) easily.

# Master Response 1

**From:** [REDACTED]  
**To:** [Passantino, Rosemary](#); [Campo, Jon](#); [Julene, Michelle](#); [Hoorn, Jason](#)  
**Subject:** Re: IS/MND Public Comments Memorial Trail - Cynthia Kredo  
**Date:** Monday, July 11, 2022 4:50:17 PM

---



## IS/MND Public Comments Memorial Trail

|          |  |
|----------|--|
| Name     | Cynthia Kredo  |
| Email    | [REDACTED]   |
| Zipcode  | 94903  |
| Comments | I am a long time resident of Terra aliens who has walked, hiked, and bikes the Terra Linda Sleep Hollow Ridge often. As a member of the community I support the construction of the Memorial trail to provide access to additional trails and environmental areas. I believe this trail will provide equity to students at Terra Linda High School who often are car reliant in accessing the nature space in the local community. |

You can [edit this submission](#) and [view all your submissions](#) easily.

# Master Response 1

**From:** [REDACTED]  
**To:** [Passantino, Rosemary](#); [Campo, Jon](#); [Julene, Michelle](#); [Hoorn, Jason](#)  
**Subject:** Re: IS/MND Public Comments Memorial Trail - Dan Stevens  
**Date:** Tuesday, July 12, 2022 6:00:38 AM

---



## IS/MND Public Comments Memorial Trail

|          |   |
|----------|---|
| Name     | Dan Stevens   |
| Email    | [REDACTED]  |
| Zipcode  | 94941   |
| Comments | I support the development of these trails to provide further community access and prevent erosion |

You can [edit this submission](#) and [view all your submissions](#) easily.



# Master Response 1

**From:** [REDACTED]  
**To:** [Passantino, Rosemary](#); [Campo, Jon](#); [Julene, Michelle](#); [Hoorn, Jason](#)  
**Subject:** Re: IS/MND Public Comments Memorial Trail - Tom Boss  
**Date:** Wednesday, July 13, 2022 1:20:34 PM  
**Attachments:** [Memorial Trail Project Comment Letter 7-12-22.pdf](#)

---



## IS/MND Public Comments Memorial Trail

|               |  |
|---------------|--|
| Name          | Tom Boss   |
| Email         | [REDACTED]   |
| Zipcode       | 94930  |
| Comments      | Marin County Bicycle Coalition supports approval of this project. Our comments are in the attached letter. |
| Attach a File | <a href="#">Memorial Trail Project Comment Letter 7-12-22.pdf</a>  |

You can [edit this submission](#) and [view all your submissions](#) easily.



MARIN COUNTY BICYCLE COALITION

Marin County Parks  
3501 Civic Center Drive, Suite 260  
San Rafael, CA 94903

To whom it may concern:

Thank you for the opportunity to comment on the draft Initial Study/Mitigated Negative Declaration (IS/MND) for the proposed Memorial Trail Improvement Project in the Terra Linda/Sleepy Hollow Divide Open Space Preserve. We have reviewed the document and take this opportunity to voice our full support for approving the project as outlined.

The Memorial Trail Improvement Project will improve connectivity for hikers, bikes and people on horseback with a far better trail alignment that enhances safety as well as the visitor experience. We are especially excited for students at St. Isabella School, Mark Day School, Miller Creek Middle School and Terra Linda High School who's access to the outdoors will be enhanced by this project.

The site's abundance of social trails makes it clear there is a need for connectivity between the Terra Linda neighborhoods at its base and the ridge above, and that the current designated trail is not adequately serving that need.

Your planners were thoughtful in their approach to this project. They established a new multi-use route, while maintaining important spur trails for hiker and equestrian use only. The decommission of 1.7 miles of trail will reduce the environmental impacts to the area, and the sustainable grade and drainage features will reduce maintenance costs and erosion.

Given that the project is consistent with the goals of MCOSD's Road and Trail Management Plan (RTMP) and deploys best management practices for trail construction identified in the plan, we look forward to its approval and implementation in the near future.

Thanks again for the opportunity to comment on the project. We look forward to recruiting volunteers if needed to help implement and maintain the trail.

Tom Boss  
Off-Road Director

# Master Response 1

**From:** [REDACTED]  
**To:** [Passantino, Rosemary](#); [Campo, Jon](#); [Julene, Michelle](#); [Hoorn, Jason](#)  
**Subject:** Re: IS/MND Public Comments Memorial Trail - aaron golbus  
**Date:** Wednesday, July 13, 2022 3:31:26 PM

---



## IS/MND Public Comments Memorial Trail

|          |   |
|----------|---|
| Name     | aaron golbus  |
| Email    | [REDACTED]  |
| Zipcode  | 94903   |
| Comments | <p>I am writing in support of what Marin Co. Open Space has proposed for the Memorial Trail Improvement Project. It will improve outdoor access for the local community and its many schools. The new alignments will improve connectivity for hikers and people on horseback. There is potential to improve connectivity for bikers if Sorich and Fox Trail are designated multi-use. The new trail alignment enhances safety as well as the visitor experience.</p> <p>Project is consistent with MCOSED's Road and Trail Management Plan goals to enhance the visitor experience and reduce the environmental impacts on sensitive resources, and deploys best management practices for trail construction. Sustainable grade and drainage features will reduce maintenance costs and erosion.</p> <p>I'd like to volunteer to help build and maintain the trail.</p> <p>I am also available for hire as a Trail Improvement Project Manager /Consultant.</p> <p>Regards, Aaron Golbus</p> |

You can [edit this submission](#) and [view all your submissions](#) easily.

# Master Response 1

**From:** [Redacted]  
**To:** [Passantino, Rosemary](#); [Campo, Jon](#); [Julene, Michelle](#); [Hoorn, Jason](#)  
**Subject:** Re: IS/MND Public Comments Memorial Trail - Brian Casey  
**Date:** Wednesday, July 13, 2022 1:49:59 PM

---



## IS/MND Public Comments Memorial Trail

|          |   |
|----------|---|
| Name     | Brian Casey   |
| Email    | [Redacted]  |
| Zipcode  | 94903   |
| Comments | This is a great idea, looking forward to seeing this trail improved and made safe for all users, including bikes. |

You can [edit this submission](#) and [view all your submissions](#) easily.

**From:** [REDACTED]  
**To:** [Passantino, Rosemary](#); [Campo, Jon](#); [Julene, Michelle](#); [Hoorn, Jason](#)  
**Subject:** Re: IS/MND Public Comments Memorial Trail - Chris Carisetti  
**Date:** Wednesday, July 13, 2022 1:31:09 PM

---



## IS/MND Public Comments Memorial Trail

|          |  |
|----------|--|
| Name     | Chris Carisetti  |
| Email    | [REDACTED]   |
| Zipcode  | 94903  |
| Comments | <p>Hello - I support the Memorial Trail Improvement Project. Beyond the well stated points below, my son is a member of the TLHS MTB team, and I'm a coach on the team, and I can emphatically state this trail project will be a great benefit to kids. Not only on the MTB teams at TL and the other local schools, but also to all the recreational riders in the area.</p> <ul style="list-style-type: none"><li>- Outdoor access is enhanced for students at St. Isabella School, Mark Day School, Miller Creek Middle School and Terra Linda High School</li><li>-Improves connectivity for hikers, bikes and people on horseback</li><li>-New trail alignment enhances safety as well as the visitor experience</li><li>-Sustainable grade and drainage features will reduce maintenance costs and erosion</li><li>-Project is consistent MCOSD's Road and Trail Management Plan goals to enhance the visitor experience and reduce the environmental impacts on sensitive resources, and deploys best management practices for trail construction</li></ul> <p>Part of our give-back on the TLHS MTB team is to volunteer time to trail maintenance. I'm sure this is something we can rally around for the Memorial Trail.</p> <p>Thanks,<br/>Chris</p> |

# Master Response 1

**From:** [REDACTED]  
**To:** [Passantino, Rosemary](#); [Campo, Jon](#); [Julene, Michelle](#); [Hoorn, Jason](#)  
**Subject:** Re: IS/MND Public Comments Memorial Trail - Cindy Irish  
**Date:** Wednesday, July 13, 2022 2:59:18 PM

---



## IS/MND Public Comments Memorial Trail

|          |  |
|----------|--|
| Name     | Cindy Irish  |
| Email    | [REDACTED]   |
| Zipcode  | 94903  |
| Comments | I would like to signal my strong support for the Memorial Trail Improvements Project. Outdoor access is enhanced for students at local schools and this project will improve connectivity for the community's hikers and bikers. |

You can [edit this submission](#) and [view all your submissions](#) easily.

# Master Response 1

**From:** [Redacted]  
**To:** [Passantino, Rosemary](#); [Campo, Jon](#); [Julene, Michelle](#); [Hoorn, Jason](#)  
**Subject:** Re: IS/MND Public Comments Memorial Trail - Daniel Sankey  
**Date:** Wednesday, July 13, 2022 2:01:16 PM

---



## IS/MND Public Comments Memorial Trail

|          |   |
|----------|---|
| Name     | Daniel Sankey   |
| Email    | [Redacted]  |
| Zipcode  | 94903   |
| Comments | <p>Hello, I was very excited to hear about this project and it seems a long time coming. The current trail is very steep and prone to poor erosion. The Marin County Bike coalition alerted me to the project and as a neighbor to the trail, a regular user of it and a trailrunner/mtn biker I'd love to see it come to fruition.</p> <p>-It will be great for students (my child included) at St. Isabella School, Mark Day School, Miller Creek Middle School and Terra Linda High School to gain outdoor access.</p> <p>-It would improve the trail for hikers, bikers and equestrians. Currently it is too steep/slippery for many in the community. I know a number of my senior neighbors that cannot use it in its current state.</p> <p>-Sustainable grade and drainage features will reduce maintenance costs and erosion.</p> <p>-The project is consistent MCOSD's Road and Trail Management Plan goals to enhance the visitor experience and reduce the environmental impacts on sensitive resources, and deploys best management practices for trail construction.</p> <p>I'd love to volunteer to help build and maintain the trail, as I live within a short walk to it. Thanks so much, Dan</p> |

You can [edit this submission](#) and [view all your submissions](#) easily.

**From:** [Redacted]  
**To:** [Passantino, Rosemary](#); [Campo, Jon](#); [Julene, Michelle](#); [Hoorn, Jason](#)  
**Subject:** Re: IS/MND Public Comments Memorial Trail - Drew Gilligan  
**Date:** Wednesday, July 13, 2022 4:40:23 PM

---



**IS/MND Public Comments Memorial Trail**

|          |   |
|----------|---|
| Name     | Drew Gilligan   |
| Email    | [Redacted]  |
| Zipcode  | 94903   |
| Comments | This is a highly trafficked hiking and biking route. A realignment would be wonderful for the many residents of Marin and Terra Linda. The great trail system is the main reason we live in Marin and we love to see the constant improvement. It makes writing that big property tax check less painful. |

You can [edit this submission](#) and [view all your submissions](#) easily.



**From:** [Redacted]  
**To:** [Passantino, Rosemary](#); [Campo, Jon](#); [Julene, Michelle](#); [Hoorn, Jason](#)  
**Subject:** Re: IS/MND Public Comments Memorial Trail - Harriot Manley  
**Date:** Wednesday, July 13, 2022 3:24:55 PM

---



**IS/MND Public Comments Memorial Trail**

|          |  |
|----------|--|
| Name     | Harriot Manley   |
| Email    | [Redacted]   |
| Zipcode  | 94903  |
| Comments | I'm writing to voice my support for improvements and realignment of the Memorial Trail in Terra Linda/Sleepy Hollow Divide. As an avid hiker, runner, and cyclist, I can attest to the importance of safely graded trails, with good sight lines and adequate room for safe turns. As a volunteer on the trail maintenance team at China Camp State Park, I also strongly support closure or redesign of poorly constructed social trails, to reduce erosion and habitat degradation. Re-building Memorial Trail to be a safe, environmentally sensitive multi-purpose trail will greatly enhance access in the preserve, and will help protect habitat and reduce negative impacts of social trails. Thanks for your efforts to make this project possible. |

You can [edit this submission](#) and [view all your submissions](#) easily.

# Master Response 1

**From:** [REDACTED]  
**To:** [Passantino, Rosemary](#); [Campo, Jon](#); [Julene, Michelle](#); [Hoorn, Jason](#)  
**Subject:** Re: IS/MND Public Comments Memorial Trail - Izzy Landry  
**Date:** Wednesday, July 13, 2022 6:58:31 PM

---



## IS/MND Public Comments Memorial Trail

|          |   |
|----------|---|
| Name     | Izzy Landry   |
| Email    | [REDACTED]  |
| Zipcode  | 94903   |
| Comments | I fully support this project! I am a high school junior and mountain bike racer who lives in the area. Looking forward to the trail work! |

You can [edit this submission](#) and [view all your submissions](#) easily.

# Master Response 1

**From:** [Redacted]  
**To:** [Passantino, Rosemary](#); [Campo, Jon](#); [Julene, Michelle](#); [Hoorn, Jason](#)  
**Subject:** Re: IS/MND Public Comments Memorial Trail - Jasper van Woudenberg  
**Date:** Wednesday, July 13, 2022 11:36:13 PM

---



## IS/MND Public Comments Memorial Trail

|          |  |
|----------|--|
| Name     | Jasper van Woudenberg  |
| Email    | [Redacted]   |
| Zipcode  | 94903  |
| Comments | Outdoor access is enhanced for students at St. Isabella School, Mark Day School, Miller Creek Middle School and Terra Linda High School<br>Improves connectivity for hikers, bikes and people on horseback<br>New trail alignment enhances safety as well as the visitor experience<br>Sustainable grade and drainage features will reduce maintenance costs and erosion<br>Project is consistent MCOSD's Road and Trail Management Plan goals to enhance the visitor experience and reduce the environmental impacts on sensitive resources, and deploys best management practices for trail construction |

You can [edit this submission](#) and [view all your submissions](#) easily.

# Master Response 1

**From:** [REDACTED]  
**To:** [Passantino, Rosemary](#); [Campo, Jon](#); [Julene, Michelle](#); [Hoorn, Jason](#)  
**Subject:** Re: IS/MND Public Comments Memorial Trail - Jeff Landry  
**Date:** Wednesday, July 13, 2022 8:42:43 PM

---



## IS/MND Public Comments Memorial Trail

|          |  |
|----------|--|
| Name     | Jeff Landry  |
| Email    | [REDACTED]   |
| Zipcode  | 94903  |
| Comments | Very excited about the Memorial Trail re-alignment as its current state is really too steep and rutted. Allowing mountain bike access will create a missing link to the east end of Terra Linda ridge that is long overdue. Thank you for pursuing this project! |

You can [edit this submission](#) and [view all your submissions](#) easily.

**From:** [Redacted]  
**To:** [Passantino, Rosemary](#); [Campo, Jon](#); [Julene, Michelle](#); [Hoorn, Jason](#)  
**Subject:** Re: IS/MND Public Comments Memorial Trail - Mel Santos  
**Date:** Wednesday, July 13, 2022 3:20:27 PM

---



**IS/MND Public Comments Memorial Trail**

|          |   |
|----------|---|
| Name     | Mel Santos  |
| Email    | [Redacted]  |
| Zipcode  | 94903   |
| Comments | <p>Hello,<br/>I am writing to support this project. I have been Terra Linda resident for 8 years.</p> <p>I am particularly interested in the benefits of this project, that include enhancing access, safety, and overall experience for those residents and visitors who will share this vital connector trail.</p> <p>I'd like to volunteer to help build and maintain the trail once the project is underway. Please put me on the list.</p> <p>Thank you,<br/>Mel Santos</p> <p>TerraLinda Resident</p> |

You can [edit this submission](#) and [view all your submissions](#) easily.

# Master Response 1

**From:** [REDACTED]  
**To:** [Passantino, Rosemary](#); [Campo, Jon](#); [Julene, Michelle](#); [Hoorn, Jason](#)  
**Subject:** Re: IS/MND Public Comments Memorial Trail - Michael Krueger  
**Date:** Wednesday, July 13, 2022 1:25:21 PM

---



## IS/MND Public Comments Memorial Trail

|          |   |
|----------|---|
| Name     | Michael Krueger   |
| Email    | [REDACTED]  |
| Zipcode  | 94903   |
| Comments | Please support increased access to the outdoors for our students! |

You can [edit this submission](#) and [view all your submissions](#) easily.

**From:** [Redacted]  
**To:** [Passantino, Rosemary](#); [Campo, Jon](#); [Julene, Michelle](#); [Hoorn, Jason](#)  
**Subject:** Re: IS/MND Public Comments Memorial Trail - Michael Yoham  
**Date:** Wednesday, July 13, 2022 3:16:17 PM

---



**IS/MND Public Comments Memorial Trail**

|          |  |
|----------|--|
| Name     | Michael Yoham  |
| Email    | [Redacted]   |
| Zipcode  | 94903  |
| Comments | <p>This trail location is critical to improve connectivity and safe trails on the northern side of San Rafael to Terra Linda Ridge.</p> <p>Outdoor access is enhanced for students at multiple schools such as (St. Isabella School, Mark Day School, Miller Creek Middle School and Terra Linda High School) as well as the public in general. Improves connectivity for hikers, bikes and people on horseback and makes it a safe surface trail.</p> <p>Current trails are steep, loose and eroded by horses and rain runoff.</p> <p>New trail alignment enhances safety as well as the visitor experience with different views and terrain. Sustainable grade and drainage features will reduce maintenance costs and erosion</p> <p>Project is consistent MCOSD’s Road and Trail Management Plan goals to enhance the visitor experience and reduce the environmental impacts on sensitive resources, and deploys best management practices for trail construction similar to Ponti Trail.</p> <p>I'd like to volunteer to help build and maintain the trail</p> |

You can [edit this submission](#) and [view all your submissions](#) easily.

# Master Response 1

**From:** [REDACTED]  
**To:** [Passantino, Rosemary](#); [Campo, Jon](#); [Julene, Michelle](#); [Hoorn, Jason](#)  
**Subject:** Re: IS/MND Public Comments Memorial Trail - Philip Mooney  
**Date:** Wednesday, July 13, 2022 4:05:11 PM

---



## IS/MND Public Comments Memorial Trail

|          |   |
|----------|---|
| Name     | Philip Mooney   |
| Email    | [REDACTED]  |
| Zipcode  | 94901   |
| Comments | This is a great project that I support. The outdoor access is enhanced for students at St. Isabella School, Mark Day School, Miller Creek Middle School and Terra Linda High School. This not only improves connectivity for kids, but also improves connectivity for hikers, bikes, and people on horseback. |

You can [edit this submission](#) and [view all your submissions](#) easily.



# Master Response 1

**From:** [REDACTED]  
**To:** [Passantino, Rosemary](#); [Campo, Jon](#); [Julene, Michelle](#); [Hoorn, Jason](#)  
**Subject:** Re: IS/MND Public Comments Memorial Trail - Stephen Barnes  
**Date:** Wednesday, July 13, 2022 10:09:23 PM

---



## IS/MND Public Comments Memorial Trail

|          |  |
|----------|--|
| Name     | Stephen Barnes   |
| Email    | [REDACTED]   |
| Zipcode  | 94903  |
| Comments | As a Terra Lind resident for 24 years. and as a Hiker and Mtn Biker, I strongly support this project |

You can [edit this submission](#) and [view all your submissions](#) easily.

# Master Response 1

**From:** [REDACTED]  
**To:** [Passantino, Rosemary](#); [Campo, Jon](#); [Julene, Michelle](#); [Hoorn, Jason](#)  
**Subject:** Re: IS/MND Public Comments Memorial Trail - Christian Hobbs  
**Date:** Thursday, July 14, 2022 11:18:46 AM

---



## IS/MND Public Comments Memorial Trail

|          |  |
|----------|--|
| Name     | Christian Hobbs  |
| Email    | [REDACTED]   |
| Zipcode  | 94925  |
| Comments | This project is going to provide some very useful connectivity for kids and others between San Anselmo and Terra Linda. It provides a great alternative to riding over Fawn Drive or Lincoln for those who live in the area. |

You can [edit this submission](#) and [view all your submissions](#) easily.

**From:** [REDACTED]  
**To:** [Passantino, Rosemary](#); [Campo, Jon](#); [Julene, Michelle](#); [Hoorn, Jason](#)  
**Subject:** Re: IS/MND Public Comments Memorial Trail - Ethan Schwartz  
**Date:** Thursday, July 14, 2022 7:05:26 AM

---



## IS/MND Public Comments Memorial Trail

|          |  |
|----------|--|
| Name     | Ethan Schwartz   |
| Email    | [REDACTED]   |
| Zipcode  | 94903  |
| Comments | <p>I support opening this trail to multi use including bikes. It will improve outdoor access is for students at St. Isabella School, Mark Day School, Miller Creek Middle School and Terra Linda High School. It will improve connectivity for hikers, bikes and people on horseback. New trail alignment will enhance safety as well as the visitor experience. Sustainable grade and drainage features will reduce maintenance costs and erosion. It is consistent with MCOSED's Road and Trail Management Plan goals to enhance the visitor experience and reduce the environmental impacts on sensitive resources, and deploys best management practices for trail construction. I'd volunteer to help build and maintain the trail as well.</p> <p>Thank you,</p> <p>Ethan Schwartz</p> |

You can [edit this submission](#) and [view all your submissions](#) easily.

**From:** [REDACTED]  
**To:** [Passantino, Rosemary](#); [Campo, Jon](#); [Julene, Michelle](#); [Hoorn, Jason](#)  
**Subject:** Re: IS/MND Public Comments Memorial Trail - Joe Harvey  
**Date:** Thursday, July 14, 2022 6:52:57 AM

---



## IS/MND Public Comments Memorial Trail

|          |   |
|----------|---|
| Name     | Joe Harvey  |
| Email    | [REDACTED]  |
| Zipcode  | 94903-2427  |
| Comments | Having hiked up the memorial trail, I am very glad to have this project contemplated and am very supportive. It is too steep a trail to hike down for me, much less bike up or down. This project would open up a safe and beautiful way for hikers, bikers, and equestrians to move up and down the Terra Linda/Sleepy Hollow Ridge from the north side, and make it possible for students from Terra Linda High School, Mark Day School, Vallecito, St. Isabella's, and more. It would provide a safer route for residents of the area to access the beautiful hillside and ridgeline. And it would improve the sustainability of the slope, cutting erosion of the soil. |

You can [edit this submission](#) and [view all your submissions](#) easily.

# Master Response 1

**From:** [REDACTED]  
**To:** [Passantino, Rosemary](#); [Campo, Jon](#); [Julene, Michelle](#); [Hoorn, Jason](#)  
**Subject:** Re: IS/MND Public Comments Memorial Trail - KEVIN GERZEVITZ  
**Date:** Thursday, July 14, 2022 8:42:00 AM

---



## IS/MND Public Comments Memorial Trail

|          |  |
|----------|--|
| Name     | KEVIN GERZEVITZ  |
| Email    | [REDACTED]   |
| Zipcode  | 94903  |
| Comments | I'm in favor of this project. One of the best aspects of Terra Linda is hiking access to the hills surrounding it. |

You can [edit this submission](#) and [view all your submissions](#) easily.

# Master Response 1

**From:** [REDACTED]  
**To:** [Passantino, Rosemary](#); [Campo, Jon](#); [Julene, Michelle](#); [Hoorn, Jason](#)  
**Subject:** Re: IS/MND Public Comments Memorial Trail - Luc Pieron  
**Date:** Thursday, July 14, 2022 3:41:56 PM

---



## IS/MND Public Comments Memorial Trail

|          |  |
|----------|--|
| Name     | Luc Pieron   |
| Email    | [REDACTED]   |
| Zipcode  | 94903  |
| Comments | This project will improve connectivity for hikers and bikes! |

You can [edit this submission](#) and [view all your submissions](#) easily.

# Master Response 1

**From:** [REDACTED]  
**To:** [Passantino, Rosemary](#); [Campo, Jon](#); [Julene, Michelle](#); [Hoorn, Jason](#)  
**Subject:** Re: IS/MND Public Comments Memorial Trail - Preston McCoy  
**Date:** Thursday, July 14, 2022 8:00:25 AM

---



## IS/MND Public Comments Memorial Trail

|          |   |
|----------|---|
| Name     | Preston McCoy   |
| Email    | [REDACTED]  |
| Zipcode  | 94903-2334  |
| Comments | <p>I think this is a wonderful idea for trail improvement. The current situation is disorganized and messy, and very steep and prone to erosion. It is also impassable for bikes and is difficult and dangerous for most walkers.</p> <p>I look forward to hiking and biking the new trail<br/>Thank you.</p> |

You can [edit this submission](#) and [view all your submissions](#) easily.

From: [Redacted]  
To: [Passantino, Rosemary](#); [Campo, Jon](#); [Julene, Michelle](#); [Hoorn, Jason](#)  
Subject: Re: IS/MND Public Comments Memorial Trail - Robert Miller  
Date: Thursday, July 14, 2022 9:02:26 PM



IS/MND Public Comments Memorial Trail

|          |   |
|----------|---|
| Name     | Robert Miller   |
| Email    | [Redacted]  |
| Zipcode  | 94903   |
| Comments | <p>Marin Conservation League appreciates the opportunity to submit comments on the Memorial Trail IS/Negative Declaration. We find that the document is complete and, with the Road and Trail Management Plan Program EIR as the basis for environmental review, adequately fulfills the requirements of CEQA.</p> <p>For more than a year, we have followed the MCP process of study and analysis of the Memorial Trail complex – the assessment of plant communities and habitats that characterize the site, and the condition of trails that currently traverse the site. Our representatives have visited the site and observed that many of the trails are substandard social trails, and the “main” trail itself is in highly degraded condition. Nonetheless, this is a much used connection for visitors from Terra Linda neighborhoods to access upper trails in the Terra Linda-Sleepy Hollow Divide Open Space Preserve. The proposed alignment and local connections will improve that experience.</p> <p>We appreciate that County Parks staff did an admirable job of reaching out to engage the community, including the Terra Linda High School community as well as residents, to determine needs and discuss solutions. The trail configurations that you discuss in the IS/Neg Dec appear to fulfill the needs of these and other visitors and at the same time impose the least impact on the environment by avoiding sensitive habitats and minimizing the footprint of the realignment.</p> <p>Thank you for your work!<br/>Sincerely,<br/>Robert Miller, President, Marin Conservation League<br/>Nona Dennis, for MCL's Parks &amp; Open Space</p> |



# Master Response 1

**From:** [REDACTED]  
**To:** [Passantino, Rosemary](#); [Campo, Jon](#); [Julene, Michelle](#); [Hoorn, Jason](#)  
**Subject:** Re: IS/MND Public Comments Memorial Trail - Sean Hogan  
**Date:** Thursday, July 14, 2022 3:48:19 AM

---



## IS/MND Public Comments Memorial Trail

|          |  |
|----------|--|
| Name     | Sean Hogan   |
| Email    | [REDACTED]   |
| Zipcode  | 94903  |
| Comments | I'm writing to express my support for the Memorial Trail Project in Terra Linda. Realigning the Memorial Trail off Terra Linda Ridge and making it a full multiuse will improve connectivity to Open Space for everyone. |

You can [edit this submission](#) and [view all your submissions](#) easily.

**From:** [Redacted]  
**To:** [Passantino, Rosemary](#); [Campo, Jon](#); [Julene, Michelle](#); [Hoorn, Jason](#)  
**Subject:** Re: IS/MND Public Comments Memorial Trail - Sophia Beavis  
**Date:** Thursday, July 14, 2022 3:10:35 AM

---



**IS/MND Public Comments Memorial Trail**

|          |   |
|----------|---|
| Name     | Sophia Beavis   |
| Email    | [Redacted]  |
| Zipcode  | 94903   |
| Comments | <p>This project creates Outdoor access is enhanced for students at St. Isabella School, Mark Day School, Miller Creek Middle School and Terra Linda High School</p> <p>It would create more multi use trails for hikers, bikes and people on horseback which our community will love!</p> <p>The new trail alignment enhances safety as well as the visitor experience</p> <p>Sustainable grade and drainage features will reduce maintenance costs and erosion</p> <p>Project is consistent MCOSD’s Road and Trail Management Plan goals to enhance the visitor experience and reduce the environmental impacts on sensitive resources, and deploys best management practices for trail construction</p> <p>I'd like to volunteer to help build and maintain the trail</p> |

You can [edit this submission](#) and [view all your submissions](#) easily.

**From:** [Redacted]  
**To:** [Passantino, Rosemary](#); [Campo, Jon](#); [Julene, Michelle](#); [Hoorn, Jason](#)  
**Subject:** Re: IS/MND Public Comments Memorial Trail - Alex Burnham  
**Date:** Friday, July 15, 2022 1:58:51 PM

---



**IS/MND Public Comments Memorial Trail**

|          |   |
|----------|---|
| Name     | Alex Burnham  |
| Email    | [Redacted]  |
| Zipcode  | 94901   |
| Comments | <p>This relatively small project has many benefits.<br/>* Outdoor access is enhanced for students at St. Isabella School, Mark Day School, Miller Creek Middle School, and Terra Linda High School reducing, in some cases the need for car transport to and from those schools.<br/>It will greatly improve connectivity for hikers, bikes and people on horseback for this side of the divide.<br/>This new trail alignment enhances safety as well as the visitor experience and improves sustainability and drainage reducing maintenance costs.</p> <p>This project is consistent MCOSD’s Road and Trail Management Plan goals to enhance the visitor experience and reduce the environmental impact on sensitive resources.<br/>It will be another project employing best management practices for trail construction and sustainability.<br/>This trail is in my backyard, so volunteering to help build and maintain the trail is a no brainer. Put me on the list! Thank you, Alex Burnham</p> |

You can [edit this submission](#) and [view all your submissions](#) easily.

# Master Response 1

**From:** [REDACTED]  
**To:** [Passantino, Rosemary](#); [Campo, Jon](#); [Julene, Michelle](#); [Hoorn, Jason](#)  
**Subject:** Re: IS/MND Public Comments Memorial Trail - Annabel Heinemann  
**Date:** Friday, July 15, 2022 9:13:49 AM

---



## IS/MND Public Comments Memorial Trail

|          |   |
|----------|---|
| Name     | Annabel Heinemann   |
| Email    | [REDACTED]  |
| Zipcode  | 94941   |
| Comments | I'd like to voice my support this project. It is great to see trail improvements that increase trail access. This will benefit all, including the many nearby schools. Thank you! |

You can [edit this submission](#) and [view all your submissions](#) easily.

# Master Response 1

**From:** [REDACTED]  
**To:** [Passantino, Rosemary](#); [Campo, Jon](#); [Julene, Michelle](#); [Hoorn, Jason](#)  
**Subject:** Re: IS/MND Public Comments Memorial Trail - Donald Johnson  
**Date:** Friday, July 15, 2022 3:33:49 PM

---



## IS/MND Public Comments Memorial Trail

|          |   |
|----------|---|
| Name     | Donald Johnson  |
| Email    | [REDACTED]  |
| Zipcode  | 94930   |
| Comments | I would like to comment that this is a very needed project it will create a new multi-use link and eliminate a few over grade trails I personally have been looking forward to it for years and I am willing to volunteer on construction and maintenance days this is exactly why I voted for measure A<br>Thanks<br>Thank you |

You can [edit this submission](#) and [view all your submissions](#) easily.

# Master Response 1

**From:** [REDACTED]  
**To:** [Passantino, Rosemary](#); [Campo, Jon](#); [Julene, Michelle](#); [Hoorn, Jason](#)  
**Subject:** Re: IS/MND Public Comments Memorial Trail - Gautham Iyer  
**Date:** Friday, July 15, 2022 2:50:28 PM

---



## IS/MND Public Comments Memorial Trail

|          |  |
|----------|--|
| Name     | Gautham Iyer   |
| Email    | [REDACTED]   |
| Zipcode  | 94903  |
| Comments | This trail will be an incredibly welcoming addition to the already extensive Marin country trail system. Now more than ever we need access to outdoor spaces for our mental, physical, and emotional well being. This trail specifically addresses a unique need to the students to TL High school. It will provide direct and easy access from several points and offload some of the commuting needs as it connects key areas in the region. |

You can [edit this submission](#) and [view all your submissions](#) easily.

# Master Response 1

**From:** [REDACTED]  
**To:** [Passantino, Rosemary](#); [Campo, Jon](#); [Julene, Michelle](#); [Hoorn, Jason](#)  
**Subject:** Re: IS/MND Public Comments Memorial Trail - Jackson Ratcliffe  
**Date:** Friday, July 15, 2022 2:35:23 PM

---



## IS/MND Public Comments Memorial Trail

|          |   |
|----------|---|
| Name     | Jackson Ratcliffe   |
| Email    | [REDACTED]  |
| Zipcode  | 94925   |
| Comments | please implement this project and provide a better multi-use connector trail. this will be a great improvement so bikes can actually traverse our public lands. |

You can [edit this submission](#) and [view all your submissions](#) easily.

# Master Response 1

**From:** [REDACTED]  
**To:** [Passantino, Rosemary](#); [Campo, Jon](#); [Julene, Michelle](#); [Hoorn, Jason](#)  
**Subject:** Re: IS/MND Public Comments Memorial Trail - Vernon (Access4Bikes) Huffman  
**Date:** Friday, July 15, 2022 12:43:13 PM  
**Attachments:** [Memorial Trail Comment Letter 7-15-22.pdf](#)

---



## IS/MND Public Comments Memorial Trail

|               |  |
|---------------|--|
| Name          | Vernon (Access4Bikes) Huffman  |
| Email         | [REDACTED]   |
| Zipcode       | 94973  |
| Comments      | Please see attached letter for comments on behalf of the Access4Bikes Foundation |
| Attach a File | <a href="#">Memorial Trail Comment Letter 7-15-22.pdf</a>                        |

You can [edit this submission](#) and [view all your submissions](#) easily.





Marin County Parks

3501 Civic Center Drive, Suite 260

San Rafael, CA 94903

To whom it may concern:

Thank you for the opportunity to comment on the draft Initial Study/Mitigated Negative Declaration (IS/MND) for the proposed Memorial Trail Improvement Project in the Terra Linda/Sleepy Hollow Divide Open Space Preserve.

We have carefully reviewed the project outline and believe it is complete and in line with the goals of the RTMP, therefore we support the project in its entirety.

The Memorial Trail Improvement Project is a much needed improvement to the existing conditions. The current Memorial Trail is excessively over grade, erosive, and unsafe for most users, plus it is signed 'no bike'. Bikes have needed access from the ridge to Terra Linda for decades so by changing this to Multi Use you are improving access and inclusivity for all user groups. We know that the community and in particular the schools in Terra Linda will also enjoy the improved access and safety this project will provide.

We appreciate that this project will clean up a social network of trails created by users over time. That network indicates an unmet need that this project will provide, resulting in an improved environmental condition.

Given that the project is consistent with the goals of MCOSD's Road and Trail Management Plan (RTMP) and deploys best management practices for trail construction identified in the plan, we look forward to its approval and implementation in the near future.

The members of Access4Bikes are ready to help with construction and maintenance when needed. We can also recruit the Terra Linda running team, biking team, and environmental science department.

Thanks again for the opportunity to comment on the project

Vernon Huffman, Executive Director, Access4Bikes Foundation

# Master Response 1

**From:** [REDACTED]  
**To:** [Passantino, Rosemary](#); [Campo, Jon](#); [Julene, Michelle](#); [Hoorn, Jason](#)  
**Subject:** Re: IS/MND Public Comments Memorial Trail - Lloyd Miller  
**Date:** Friday, July 15, 2022 9:28:29 AM

---



## IS/MND Public Comments Memorial Trail

|          |   |
|----------|---|
| Name     | Lloyd Miller  |
| Email    | [REDACTED]  |
| Zipcode  | 94903   |
| Comments | <p>The community needs better more usable access to the open spaces. Make it easier for everyone to get off their phones and couches, including all the students at St. Isabella School, Mark Day School, Miller Creek Middle School and Terra Linda High School. Also, let's provide better connectivity for hikers, bikes and people on horseback.</p> <p>I would volunteer to help build and maintain the trail. I have volunteered on various trail building efforts in my community wherever I have lived, most recently volunteering for trail work on the Ponte trail.</p> <p>Let's do this!</p> |

You can [edit this submission](#) and [view all your submissions](#) easily.

# Master Response 1

**From:** [REDACTED]  
**To:** [Passantino, Rosemary](#); [Campo, Jon](#); [Julene, Michelle](#); [Hoorn, Jason](#)  
**Subject:** Re: IS/MND Public Comments Memorial Trail - Sammy Owen  
**Date:** Friday, July 15, 2022 1:44:18 PM

---



## IS/MND Public Comments Memorial Trail

|          |   |
|----------|---|
| Name     | Sammy Owen  |
| Email    | [REDACTED]  |
| Zipcode  | 94930   |
| Comments | I support this as a great example of sustainable multi-use trail, I would love to see these kinds of projects continue to better link to terra linda ridge fire road for bikes. |

You can [edit this submission](#) and [view all your submissions](#) easily.

# Master Response 1

**From:** [Hoorn, Jason](#)  
**To:** [REDACTED] Shirley Fischer  
**Cc:** [REDACTED] [Campo, Jon](#); [Julene, Michelle](#)  
**Subject:** RE: Memorial Trail Improvement Project  
**Date:** Monday, July 18, 2022 12:29:51 PM

---

Hi Shirley,

Great to hear from you. I hope you are recovering well. We have had a great number of comments with the vast majority being in support of the project. Currently, we are on track to begin construction next year, hopefully in the spring. I'll keep you apprised as we move forward.

Wishing you the best,

Jason



**Jason Hoorn**  
NATURAL RESOURCES COORDINATOR

Marin County Parks  
3501 Civic Center Drive, Suite 260  
San Rafael, CA 94903  
415 320 4610 Cell  
[JHoorn@marincounty.org](mailto:JHoorn@marincounty.org)  
[www.marincountyparks.org](http://www.marincountyparks.org)

Follow us on [Facebook](#), [Twitter](#), and [Instagram](#)

---

**From:** [REDACTED]  
**Sent:** Monday, July 18, 2022 12:25 PM  
**To:** [Hoorn, Jason](#)  
**Cc:** [REDACTED] [Campo, Jon](#); [Julene, Michelle](#)  
**Subject:** Memorial Trail Improvement Project

Greetings, Jason.

I have been out of the country and then recovering from COVID during the comment period for the Mitigated Negative Declaration for the Memorial Trail Improvement Plan, and I just got around to looking at the document today. It is an impressive study, with lots of interesting information, and it is great to see the formalized plans of the Memorial Trail improvements fleshing out the ideas that you and Jon presented to the community a year ago. Congratulations!

Have you received many comments on the MND?

Is the project on track to move forward as planned? Any target date for when construction may start?

Looking forward to keeping in touch as the project progresses.  
Best regards,  
Shirley

## Master Response 1 and 4

**From:** [REDACTED]  
**To:** [Passantino, Rosemary](#); [Campo, Jon](#); [Julene, Michelle](#); [Hoorn, Jason](#)  
**Subject:** Re: IS/MND Public Comments Memorial Trail - Jeff Weidner  
**Date:** Tuesday, July 12, 2022 11:10:11 AM

---



### IS/MND Public Comments Memorial Trail

|          |  |
|----------|--|
| Name     | Jeff Weidner   |
| Email    | [REDACTED]   |
| Zipcode  | 94903  |
| Comments | This is great! Please expedite.<br>Also - please make the Malone segment bike access, too. |

You can [edit this submission](#) and [view all your submissions](#) easily.

**From:** [REDACTED]  
**To:** [Passantino, Rosemary](#); [Campo, Jon](#); [Julene, Michelle](#); [Hoorn, Jason](#)  
**Subject:** Re: IS/MND Public Comments Memorial Trail - Lorene Jackson  
**Date:** Friday, July 01, 2022 8:03:00 PM

---



## IS/MND Public Comments Memorial Trail

|          |  |
|----------|--|
| Name     | Lorene Jackson   |
| Email    | [REDACTED]   |
| Zipcode  | 94903  |
| Comments | <p>As a 40 year resident of Los Ranchitos, I strongly support the new trail from Oak Ridge to Memorial Trail. This will be a major asset for the neighborhood, particularly the kids. We were quite upset when the previous trail was blocked many years ago, eliminating a safer and quicker route for kids to get to Vallecito Elementary, TL High School, and TL in general. I don't believe parking will be an issue. A car or two now and then will not be a problem. Please proceed with construction as soon as possible. Thanks</p> <p>(BTW, please open up Crestwood Trail for dogs off leash! This is a mapped fire road that was donated to the County by the neighborhood; dogs have been off leash in this area for years.)</p> |

You can [edit this submission](#) and [view all your submissions](#) easily.

**From:** [REDACTED]  
**To:** [Passantino, Rosemary](#); [Campo, Jon](#); [Julene, Michelle](#); [Hoorn, Jason](#)  
**Subject:** Re: IS/MND Public Comments Memorial Trail - Emily Morganti  
**Date:** Tuesday, July 12, 2022 3:45:29 PM

---



### IS/MND Public Comments Memorial Trail

|          |   |
|----------|---|
| Name     | Emily Morganti  |
| Email    | [REDACTED]  |
| Zipcode  | 94903   |
| Comments | <p>Please don't publicize the trailhead on Oak Ridge Road. There are many reasons this is a bad idea:</p> <ul style="list-style-type: none"><li>* Oak Ridge Road is a steep dead-end street with nowhere for cars to easily turn around.</li><li>* This neighborhood has no sidewalks, meaning people and dogs walk in the street. Increased traffic, street parking, and drivers trying to turn around will put us at risk.</li><li>* The trailhead is halfway up the street between two curves. Cars parked along this stretch of road will make driving up and down Oak Ridge more difficult and dangerous.</li><li>* The trailhead is next to the street's only fire hydrant, which puts our property at risk if people park in front of it.</li><li>* The trailhead is right next to private property with no obvious separation between the public and private land.</li><li>* Circle Road also has no sidewalks and a lot of foot traffic. It's not conducive to the additional traffic that publicizing the trailhead would bring.</li></ul> <p>Why was the Los Ranchitos Improvement Association not consulted about this plan, as the Terra Linda Neighborhood Association and Terra Linda High School were? Where do you expect people to park? Where will hikers throw their trash? Please don't publicize the trailhead and bring unsupportable traffic into our neighborhood.</p> |



## Master Response 2

**From:** [Hoorn, Jason](#) Judy Schriebman  
**To:** [REDACTED]  
**Cc:** [Julene, Michelle](#); [Passantino, Rosemary](#); [Campo, Jon](#)  
**Subject:** RE: Memorial Trail  
**Date:** Tuesday, June 21, 2022 11:59:39 AM  
**Attachments:** [A1CA1114B53F41FBB2811FFBFBF26E30.png](#)

---

Hi Judy,

That is a beautiful piece of stream, indeed. We have a dedicated in-house crew of professional trailbuilders who take great pride in their work. Please rest assured knowing that we that we will not damage it.

Thanks,  
Jason



**Jason Hoorn**  
NATURAL RESOURCES COORDINATOR

Marin County Parks  
3501 Civic Center Drive, Suite 260  
San Rafael, CA 94903  
415 320 4610 Cell  
[JHoorn@marincounty.org](mailto:JHoorn@marincounty.org)  
[www.marincountyparks.org](http://www.marincountyparks.org)

Follow us on [Facebook](#), [Twitter](#), and [Instagram](#)

---

**From:** [REDACTED]  
**Sent:** Tuesday, June 21, 2022 11:35 AM  
**To:** [Hoorn, Jason](#)  
**Subject:** Re: Memorial Trail

Thanks so much for the clarification. That rocky cataract stream is gorgeous with or without water. Please do take care of it! I think this plan will do so but keep an eye on the contractors!!!

Judy

On Tue, Jun 21, 2022 at 11:31 AM Hoorn, Jason <[jhoorn@marincounty.org](mailto:jhoorn@marincounty.org)> wrote:

Hi Judy,  
Yes, lots of trees! Sorry there is not a line on the map indicating Oak Ridge Road. The proposed trailhead will be upslope of the old access that you mentioned and downslope from the current access point.  
Thanks,  
Jason



**Jason Hoorn**  
NATURAL RESOURCES COORDINATOR

Marin County Parks  
3501 Civic Center Drive, Suite 260  
San Rafael, CA 94903  
415 320 4610 Cell  
[JHoorn@marincounty.org](mailto:JHoorn@marincounty.org)  
[www.marincountyparks.org](http://www.marincountyparks.org)

Follow us on [Facebook](#), [Twitter](#), and [Instagram](#)

---

**From:** [REDACTED]  
**Sent:** Tuesday, June 21, 2022 11:19 AM  
**To:** [Hoorn, Jason](#)  
**Subject:** Re: Memorial Trail

Thanks Jason. With all our trees it's hard to see the road. We've had two access points in the past. It looks like this one will be higher than both the other ones? Or where the current on is?

Judy

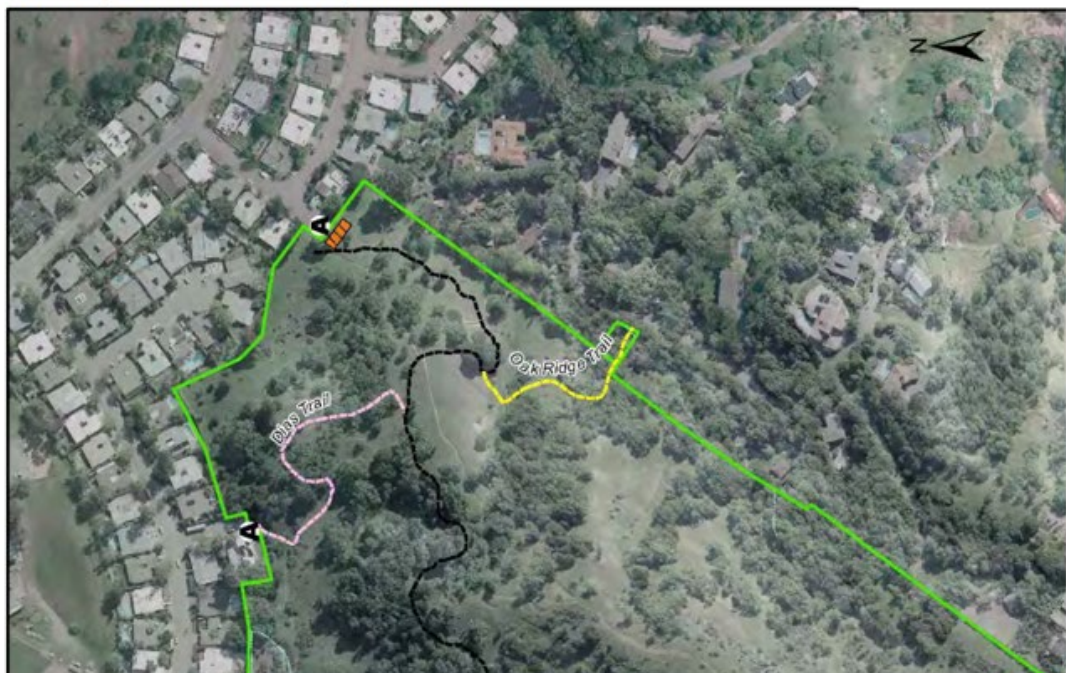
On Tue, Jun 21, 2022 at 11:09 AM Hoorn, Jason <[jhoorn@marincounty.org](mailto:jhoorn@marincounty.org)> wrote:

Hi Judy,

Thank you for your question. The proposed Oak Ridge Road trailhead would be located approximately 150 feet upslope from the axis of the curve on Oak Ridge Road on OSD property, between #50 and #70 Oak Ridge, and across the street from #55 Oak Ridge. Below is a screenshot of a map from the IS/MND showing the proposed trail and the OSD parcel lines.

Best,  
Jason

**Figure 4: Proposed Trail Improvements**





**Jason Hoorn**  
NATURAL RESOURCES COORDINATOR

Marin County Parks  
3501 Civic Center Drive, Suite 260  
San Rafael, CA 94903  
415 320 4610 Cell  
[JHoorn@marincounty.org](mailto:JHoorn@marincounty.org)  
[www.marincountyparks.org](http://www.marincountyparks.org)

Follow us on [Facebook](#), [Twitter](#), and [Instagram](#)

---

**From:** [REDACTED]  
**Sent:** Tuesday, June 21, 2022 8:52 AM  
**To:** [Hoorn, Jason](#)  
**Subject:** Memorial Trail

Judy Schriebman would like information about:

Hi Jason,

I've looked over the Memorial Trail CEQA docs and it looks like a fine project. I live in Los Ranchitos. What I couldn't quite figure out is where exactly on the map will the trail connect with Oak Ridge road? Is it closer to the bend at the base of the road?

My kids used to use that trail coming home from TLHS every day.

Thanks!

Email Disclaimer: <https://www.marincounty.org/main/disclaimers>

Email Disclaimer: <https://www.marincounty.org/main/disclaimers>

Dear Mr. Hoorn.

We read with great excitement about the planned memorial trail improvement that is being proposed by the Marin County Open Spaces. How nice it will be to connect the hills of the open space to Terra Linda. It will be beneficial to the high school students who can walk down on a daily basis and also to San Rafael residents that can now connect via trails to Terra Linda.

So now we have to ask you – where will the families who use this lovely new trail park? Is it not time to provide some sort of parking solution for the residents of Ridgewood Drive and for the people who will come up here to use this new trail? For example, down in San Anselmo on Fawn Drive there are now Resident parking only signs and people have to park further down to be able to access it. Do we need to bring up the broken garage doors? The dog walkers, the dog poop in the yard our children play in. We already take all that in our stride - can we at least get some infrastructure in place before inviting all of San Rafael up to Ridgewood to access the wonderful new Memorial trail to Terra Linda? Maybe we should add a Starbucks at the end of the road too?

We have previously spoken to Bill Guerin and Ian McLorg during a neighborhood meeting who assured us of many improvements that would be implemented on Ridgewood Drive. We worry about the speeding and the safety of the young children that play here – the speeding cars are a disaster waiting to happen. Everyone who comes up here tends to drive to the last houses just to be able to park as close to the open space as they possibly can. The two or three street spaces are usually occupied so they turn around on our driveways and speed back down to find a close spot. We the residents of Ridgewood Drive have long been begging for a resolution regarding the cars that drive up here to enjoy the open space. We all love the open space but why do we the residents have to carry the brunt of the problem?

We have frequently asked for residents parking or speed bumps. We have asked for signs so that the open space is only open sunrise to sunset to avoid lingering of young adults who bring with them cigarettes and other smoking devices that worry us with heightened fire danger. The officials we have talked to have not done a single thing to change anything or even meet us halfway with any of our requests. We have pleaded to no avail and all our efforts have fallen on deaf ears.

We have also asked to open the gate at Los Altos as there is ample parking space there - for some reason the complaint of people in cars loitering was actually heard by the officials and since then the gate has been locked. Maybe that could be opened up again and that would provide additional parking as well. We the residents think it would be a good idea to open the gate and provide some parking spaces behind the gate and a turn around possibility for the cars that come up here. That would help with the lack of parking and the lack of space for cars to turn around. Here is a little sketch we came up with – sorry it is not very clear. We can show you in person what we mean.





Signed By:

Nierke - Niji Vierke,

[Redacted]

Ingeborg Müller,

[Redacted]

*[Handwritten signature]*

[Redacted]

Demir Kapralo

[Redacted]

Michelle Van Vrancken - Michelle Van Vrancken,

[Redacted]

Gary Van Vrancken - *[Handwritten signature]*

[Redacted]

JUDI SACHS *[Handwritten signature]*

[Redacted]

*[Handwritten signature]* Linot Viebe

[Redacted]

Dan Lovette

*[Handwritten signature]*

[Redacted]

*[Handwritten signature]*

*[Handwritten signature]*

[Redacted]

## Master Response 2

**From:** [REDACTED]  
**To:** [Passantino, Rosemary](#); [Campo, Jon](#); [Julene, Michelle](#); [Hoorn, Jason](#)  
**Subject:** Re: IS/MND Public Comments Memorial Trail - Judy Schriebman  
**Date:** Friday, July 15, 2022 4:03:49 PM  
**Attachments:** [LRIA Memorial Trail Comments.pdf](#)

---



### IS/MND Public Comments Memorial Trail

|               |  |
|---------------|--|
| Name          | Judy Schriebman  |
| Email         | [REDACTED]   |
| Zipcode       | 94903  |
| Comments      | Please see attached letter from Los Ranchitos Improvement Association (LRIA), one of the oldest continuous associations in the 94903 area.<br>Thank you. |
| Attach a File | <a href="#">LRIA Memorial Trail Comments.pdf</a>   |

You can [edit this submission](#) and [view all your submissions](#) easily.



Los Ranchitos Improvement Association  
P.O. Box 4146  
San Rafael CA 94113

July 15, 2022

Marin County Open Space District  
Jason Hoorn, Project Lead  
Natural Resources Coordinator

RE: Comments on IS/MND for MCOSD Memorial Trail Improvements Project

Dear Mr. Hoorn, Marin County Open Space:

On July 6, 2022 there was an LRIA informational meeting in Los Ranchitos with John Campo and Jason Hoorn of MCOSD and equestrian trail advocate Robert Eichstaedt about the proposed MCOSD Oak Ridge Trail. The meeting was also attended by the property owner of 70 Oak Ridge Road.

The Los Ranchitos community generally supports the proposed MCOSD Oak Ridge equestrian and hiking trail remaining open by becoming a formal part of the Memorial Trail network. *However, the support is not entirely unconditional and we discussed the areas of concern that LRIA is submitting here in our comments for analysis and mitigation as required by CEQA in the public informational environmental document.*

The project description describes the trails system as: *"daily destinations for local hikers, dog walkers, mountain bikers, equestrians, bird watchers, and those who want to be immersed in nature in their recreation pursuits, right in their own communities. Frequent use by people of diverse abilities, hundreds of access points, multiple modes of travel, different rates of speed inherent in those modes, the desire to accommodate people of diverse abilities, and potential impacts to the native vegetation and wildlife pose real management challenges."*

Operation and Maintenance: (page 15) Notes: • *"After project construction, recreation on the trail network would follow the proposed designated uses. The new trail configurations would be designated into the trail system and would be published on trail maps as formal system trails. The proposed project would not include any parking or other amenities to improve access to the trail system. Trail use is expected to increase as the trail system will be more accommodating to multiple user groups. The increase in use is anticipated to be locally driven by the residents of Terra Linda and the Terra Linda High School sports programs, particularly the cross-country running team and the mountain bike team."*

With the Oak Ridge trail inclusion into the Memorial Trail network and publication on trail maps as a formal trail and the anticipated increased use of the trail system by accommodating multiple user groups we have the following concerns:

**TRANSPORTATION TABLE 17:** An increased potential hazard due to tight road geometry and inadequate emergency access resulting in degradation of response times. *Potentially Significant Impact.*

The report states that: *Access to the project area is from the following:*

*•Oak Ridge Road via Circle Road in unincorporated Marin County*

*There is no parking at Terra Linda / Sleepy Hollow Open Space Preserve except for a limited amount of roadside parking, and the proposed project does not include the provision of parking facilities.*

The MCOSD Memorial Trail initial "study area" impact assessment has been evaluated in isolation of adjacent Oak Ridge trail "road-end" access parking point in the Los Ranchitos area neighborhood. *In that sense*, the initial "study area" is nearsighted, performed in vacuum, in isolation from the existing local and future regional user traffic access context in which it can best be understood and assessed.

John Campo and Jason Hoorn of MCOSD and I discussed in depth the concern about limited existing roadside parking space and the need to maintain adequate emergency vehicle access and response times specifically along the narrow bottleneck near 43 and 50 Oak Ridge Road. LRIA has discussed these concerns with the property owners at 43 and 50 Oak Ridge Road.

*This is closest access point where trail users would find it most convenient to park.*

In the past, there have already been concerns raised with the County when neighbors have held large events on their property along that narrow bottleneck resulting in parking conflicts and creating a hazard due to the narrow road geometry potentially challenging emergency vehicle access and response times and effectively blocking access to the rest of Oak Ridge Road. The analysis therefore needs to take this *Potentially Significant Impact* into consideration, evaluate it, and pose feasible mitigations available regarding limited public parking for trail access in this particular bottleneck location.

The CEQA analysis also needs to identify and evaluate the unintended consequences of future conditions *that may arise with an increase of trail access usage parking in the future*, properly evaluate the impacts of increased *trail usage parking along that narrow bottleneck, the cumulatively considerable impacts when increased trail usage parking is combined with existing parking conflicts, and the potential hazards of inadequate emergency*



*vehicle access and response times due to the narrow road geometry and lack of sufficient parking space. The analysis then needs to pose feasible mitigations addressing that eventuality under those worse case scenario conditions.*

One feasible mitigation consideration may be signage along that critical access segment prohibiting trail access parking. *Who will be responsible for enforcement should an access problem develop: Sheriff, MCOSD, Public Works, or...? Will the MCOSD/County provide signage and enforcement to prohibit visitors from parking along this critical narrow bottleneck so adequate emergency services access and response times are maintained at all times?*

Another potential impact is trash accumulation due to increased usage. How does MCOSD propose to address trash accumulation should that develop into a significant problem in Los Ranchitos?

These is also a general neighborhood concern that with increased usage in the surrounding MCOSD area, we will be subject to a greater exposure to impacts from fire hazards. Will MCOSD be using signage to emphasize the high fire hazard danger in the Memorial Trail network area?

Thank you for your consideration. We do look forward to a better trailhead, including your serious addressing of these concerns we have raised.

Sincerely,

Leyla Hill, President LRIA  
Judy Schriebman, Secretary LRIA  
Rick Savel, Trail Committee Lead

████████████████████

## Master Response 2

**From:** [REDACTED] Christian Douglas  
**To:** [Hoorn, Jason](mailto:jhoorn@marincounty.org)  
**Cc:** [Campo, Jon](mailto:Campo, Jon); [Julene, Michelle](mailto:Julene, Michelle); [Passantino, Rosemary](mailto:Passantino, Rosemary)  
**Subject:** Re: Proposed Trail Map - Sleepy Hollow to Terra Linda  
**Date:** Friday, July 01, 2022 2:44:25 PM

---

Great. Thanks so much for clarifying and replaying to quickly.

Christian

On Jul 1, 2022, at 11:34 AM, Hoorn, Jason <[jhoorn@marincounty.org](mailto:jhoorn@marincounty.org)> wrote:

Hi Christian,

The current social trail connecting to Oak Ridge between #s 50 and 70 does so on private property. The proposed trailhead would be located on public MCOSD lands that abut Oak Ridge Road, about 100-foot downslope from the current trail. We are not proposing any connection between 74-80 Oak Ridge.

Best,  
Jason

---

**From:** Cj Douglas [REDACTED]  
**Sent:** Friday, July 1, 2022 7:49 AM  
**To:** Hoorn, Jason <[jhoorn@marincounty.org](mailto:jhoorn@marincounty.org)>  
**Cc:** Campo, Jon <[JCampo@marincounty.org](mailto:JCampo@marincounty.org)>; Julene, Michelle <[MJulene@marincounty.org](mailto:MJulene@marincounty.org)>; Passantino, Rosemary <[RPassantino@marincounty.org](mailto:RPassantino@marincounty.org)>  
**Subject:** Re: Proposed Trail Map - Sleepy Hollow to Terra Linda

Great! Thanks, Jason.

Quick Q.

The proposed plan seems to be using the existing trail egress off of Oak Ridge Road (between 50-70 Oak Ridge). However, there was also mention of two hiking trails/trailheads on one of the documents. That was reported to be between 74-80 Oak Ridge. That is not indicated on this plan.

Can you confirm this is the case? Or is it actually just the one.

Thanks again.  
Christian

## Master Response 2

Christian Douglas

On Jul 1, 2022, at 7:32 AM, Hoorn, Jason <[jhoorn@marincounty.org](mailto:jhoorn@marincounty.org)> wrote:

Hi Christian,

Here is the link to the Initial Study/Mitigated Negative Declaration for the Memorial Trail Improvement Project.

<https://www.parks.marincounty.org/-/media/files/sites/marin-county-parks/projects-and-plans/road-and-trail-management/memorial-trail-terra-linda/2022063memorialtrailimprovementproject-draftismnd.pdf?la=en>

The proposed layout map is located on page 30. Please let me know if I can be of further assistance.

Best,

Jason

---

**From:** [REDACTED]

**Sent:** Friday, July 1, 2022 7:04 AM

**To:** Hoorn, Jason <[jhoorn@marincounty.org](mailto:jhoorn@marincounty.org)>

**Subject:** Proposed Trail Map - Sleepy Hollow to Terra Linda

Christian Douglas would like information about:

Hi Jason, I am a resident on Oak Ridge Road, which falls under the purview of the proposed trail improvement plan. I have reviewed the docs below from the Marin County Parks website, but I can't find any sheet that calls out the actual newly proposed trail (in plan layout/map form). Can you get me that information? I feel that is probably the most pertinent data needed. Here are the docs I scrolled through so far - it's possible I missed something: KEY DOCUMENTS - Road and Trail Management Plan PDF - Trail Project Planning Phases PDF Many thanks! Christian  
Email Disclaimer: <https://www.marincounty.org/main/disclaimers>

Email Disclaimer: <https://www.marincounty.org/main/disclaimers>

**From:** [REDACTED]  
**To:** [Passantino, Rosemary](#); [Campo, Jon](#); [Julene, Michelle](#); [Hoorn, Jason](#)  
**Subject:** Re: IS/MND Public Comments Memorial Trail - Jim Sauve  
**Date:** Friday, July 01, 2022 9:21:35 AM

---



## IS/MND Public Comments Memorial Trail

|          |  |
|----------|--|
| Name     | Jim Sauve  |
| Email    | [REDACTED]   |
| Zipcode  | 94903  |
| Comments | <p>Hello, I live at [REDACTED]. Extending access of the Memorial Trail at Oak Ridge Road needs to take into account several things before approval.</p> <ol style="list-style-type: none"><li>1)there is very, very limited parking at the trail head.</li><li>2)to get to the trail you first have cross a seasonal creek. When the creek is dry it's a really a steep, rugged, poor footing, down, over and up to reach the single track trail on the other side of the creek bed. when there's water running through the creek there's no way to reach the other side without jumping rock to rock or walking through the creek. Trip and falls in this section to access the trail needs to be considered. I've accessed the trail for 40 years, and over that time even though I know the trail I've had my fair share of trip and falls crossing over this creek bed. It would probably be only a matter of time before someone fell, broke a an arm or a leg and then turn around and sue the city and county.</li><li>3) absolutely no place to park a truck and horse trailer on Oak Ridge.</li></ol> <p>Please consider these concerns that I have before approval of this trail head.</p> <p>Sincerely,<br/>Jim Sauve</p> |

You can [edit this submission](#) and [view all your submissions](#) easily.

# Master Response 2

**From:** [Redacted]  
**To:** [Passantino, Rosemary](#); [Campo, Jon](#); [Julene, Michelle](#); [Hoorn, Jason](#)  
**Subject:** Re: IS/MND Public Comments Memorial Trail - Rick Lewis  
**Date:** Friday, July 01, 2022 10:50:02 AM

---



## IS/MND Public Comments Memorial Trail

|          |  |
|----------|--|
| Name     | Rick Lewis   |
| Email    | [Redacted]   |
| Zipcode  | 94903  |
| Comments | The hiking access in the Los Ranchitos neighborhood is not something I would support. Roads are narrow, fire access is limited |

You can [edit this submission](#) and [view all your submissions](#) easily.

**From:** [REDACTED]  
**To:** [Passantino, Rosemary](#); [Campo, Jon](#); [Julene, Michelle](#); [Hoorn, Jason](#)  
**Subject:** Re: IS/MND Public Comments Memorial Trail - Geoff Evans  
**Date:** Monday, July 04, 2022 2:57:33 PM

---



**IS/MND Public Comments Memorial Trail**

|          |  |
|----------|--|
| Name     | Geoff Evans  |
| Email    | [REDACTED]   |
| Zipcode  | 94903  |
| Comments | <p>I am writing in opposition to incorporating the Oak Ridge social trail into the MCOSD trail system and to creating a formal trail head on Oak Ridge Road.</p> <p>Oak Ridge Road is a narrow residential road with no sidewalks, no room to park cars on the street, a steep grade, and no room to turn around in the area of the proposed trail head. Creating a formal trail head here would cause an increase in vehicle traffic (for both construction and use of the trail head) that cannot be supported by Oak Ridge Road and Circle Road. Because there are no sidewalks, residents regularly walk in the street. The increase in traffic will cause an accident at one of the many blind corners. The increase in traffic will also cause further degradation of the pavement on Circle Road, which is already in disrepair in many locations.</p> <p>Despite consulting with the Terra Linda Neighborhood Association and the Terra Linda High School, the designers of this project never consulted with the Los Ranchitos Improvement Association, which is the neighborhood association that covers Oak Ridge Road and Circle Road. This is a gross oversight, as it did not allow the residents of Oak Ridge Road and Circle Road to have a voice in the planning process.</p> <p>A formal trail head should not be established on Oak Ridge Road. It's not an appropriate location.</p> |

You can [edit this submission](#) and [view all your submissions](#) easily.

## Master Response 2

**From:** [Hoorn, Jason](#)  
**To:** [REDACTED] Danielle Meshorer  
**Cc:** [Passantino, Rosemary](#); [Campo, Jon](#); [Julene, Michelle](#); [Richardson, Craig](#); [Somers, Carl](#)  
**Subject:** RE: IS/MND Public Comments Memorial Trail - Danielle Meshorer  
**Date:** Wednesday, July 06, 2022 10:32:10 AM

---

Great. See you there.

Thanks,  
Jason

---

**From:** [REDACTED]  
**Sent:** Wednesday, July 6, 2022 10:30 AM  
**To:** [REDACTED]  
**Cc:** Hoorn, Jason <jhoorn@marincounty.org>; Passantino, Rosemary <RPassantino@marincounty.org>; Campo, Jon <JCampo@marincounty.org>; Julene, Michelle <MJulene@marincounty.org>; Richardson, Craig <crrichardson@marincounty.org>; Somers, Carl <CSomers@marincounty.org>  
**Subject:** Re: IS/MND Public Comments Memorial Trail - Danielle Meshorer

Yes, I will stop by for this meeting.

On Wed, Jul 6, 2022, 10:28 AM danielle meshorer [REDACTED] > wrote:

Hi Jason,

I am working in my office in [REDACTED] today and I can't leave work to get there for that meeting time.

Gregg- are you around and able to make it?

With gratitude,

Danielle

Danielle Meshorer  
[REDACTED]

On Jul 6, 2022, at 10:26 AM, Hoorn, Jason <[jhoorn@marincounty.org](mailto:jhoorn@marincounty.org)> wrote:

Hi Danielle,

We just scheduled a meeting with the Los Ranchitos Improvement Association for today at 3:30pm at [REDACTED] Oak Ridge Road to discuss the proposed trail. You are

welcome to join us, or we have time before or after if you'd like us to go over the project maps and show you where the proposed work would take place.

Best,  
Jason



**Jason Hoorn**  
NATURAL RESOURCES COORDINATOR

Marin County Parks  
3501 Civic Center Drive, Suite 260  
San Rafael, CA 94903  
415 320 4610 Cell  
[JHoorn@marincounty.org](mailto:JHoorn@marincounty.org)  
[www.marincountyparks.org](http://www.marincountyparks.org)

Follow us on [Facebook](#), [Twitter](#), and [Instagram](#)

---

**From:** Hoorn, Jason <[jhoorn@marincounty.org](mailto:jhoorn@marincounty.org)>  
**Sent:** Friday, July 1, 2022 2:44 PM  
**To:** danielle meshorer <[REDACTED]>  
**Cc:** Passantino, Rosemary <[RPassantino@marincounty.org](mailto:RPassantino@marincounty.org)>; Campo, Jon <[JCampo@marincounty.org](mailto:JCampo@marincounty.org)>; Julene, Michelle <[MJulene@marincounty.org](mailto:MJulene@marincounty.org)>; Richardson, Craig <[crrichardson@marincounty.org](mailto:crrichardson@marincounty.org)>; Somers, Carl <[CSomers@marincounty.org](mailto:CSomers@marincounty.org)>; Gregg Dessen <[REDACTED]>  
**Subject:** RE: IS/MND Public Comments Memorial Trail - Danielle Meshorer

Hi Danielle,  
Here is a link to the Memorial Trail Improvement Project IS/MND on our website.

<https://www.parks.marincounty.org/-/media/files/sites/marin-county-parks/projects-and-plans/road-and-trail-management/memorial-trail-terra-linda/2022063memorialtrailimprovementproject-draftismnd.pdf?la=en>

Within the document, the proposed trail decommissioning and improvements are shown on pages 29 and 30, respectively. The green lines are our property boundaries. Oak Ridge Road, although not specifically called out on the map is located along the eastern boundary.



Oak Ridge Social Trail #1 (Page 29) is an inactive trail that runs from the current Memorial Trail alignment toward Oak Ridge Road and your property. We would take passive measures on MCOSD property to ensure that this trail would stay closed.

Oak Ridge Social Trail #2 (Page 29) is the currently active social trail that begins on your property. We would actively decommission the portion of this trail that is on MCOSD lands. Hope that helps. Again, we're happy to meet.

Have a great Holiday!

Jason



**Jason Hoorn**  
NATURAL RESOURCES COORDINATOR

Marin County Parks  
3501 Civic Center Drive, Suite 260  
San Rafael, CA 94903  
415 320 4610 Cell  
[JHoorn@marincounty.org](mailto:JHoorn@marincounty.org)  
[www.marincountyparks.org](http://www.marincountyparks.org)

Follow us on [Facebook](#), [Twitter](#), and [Instagram](#)

---

**From:** [REDACTED]  
**Sent:** Friday, July 1, 2022 2:12 PM  
**To:** [Hoorn, Jason](#)  
**Cc:** [Passantino, Rosemary](#); [Campo, Jon](#); [Julene, Michelle](#); [Richardson, Craig](#); [Somers, Carl](#); [REDACTED]  
**Subject:** Re: IS/MND Public Comments Memorial Trail - Danielle Meshorer

Jason,

Thanks for getting back to me. Can you send me a map of the proposed trail site that you will develop and where on the map is Oak Ridge Road social trail #1 and #2 that you are decommissioning?

Happy 4th!

Danielle

Danielle Meshorer  
[REDACTED]

On Jul 1, 2022, at 11:46 AM, Hoorn, Jason <[jhoorn@marincounty.org](mailto:jhoorn@marincounty.org)> wrote:

Hello Danielle,  
Thank you for your email. The proposed trail improvements and decommissioning efforts outlined in the Memorial Trail IS/MND are located entirely on MCOSD property. As we have not come to a resolution regarding your encroachment, such as a land exchange or trail easement, we are not proposing to do any work on your property. We are happy to come and meet with you, review the maps and discuss the plan. Please let me know what day and time works for you.  
Best regards,  
Jason Hoorn

---

**From:** Danielle Meshorer [REDACTED] >  
**Sent:** Thursday, June 30, 2022 7:38 PM  
**To:** Passantino, Rosemary <[RPassantino@marincounty.org](mailto:RPassantino@marincounty.org)>; Campo, Jon <[JCampo@marincounty.org](mailto:JCampo@marincounty.org)>; Julene, Michelle <[MJulene@marincounty.org](mailto:MJulene@marincounty.org)>; Hoorn, Jason <[jhoorn@marincounty.org](mailto:jhoorn@marincounty.org)>  
**Subject:** Re: IS/MND Public Comments Memorial Trail - Danielle Meshorer

image002.jpg



### IS/MND Public Comments Memorial Trail

|          |   |
|----------|---|
| Name     | Danielle Meshorer                                   |
| Email    | [REDACTED]  |
| Zipcode  | 94903   |
| Comments | I need someone to come put with very clear maps and |

meet with me again. I don't understand where this is and what it means. Currently the only trail used is going through my land at [REDACTED] Oak Ridge Road. I am trying to understand which of the following proposed "decommissioned trails" is on my land.

#### Oak Ridge Social Trail 1 Decommissioning

Oak Ridge Social Trail 1 is an inactive 0.10-mile / 547-foot-long trail, extending from Oak Ridge Road to the existing Memorial Trail. The trail appears stable and is not experiencing increased erosion. No active decommissioning efforts are recommended for Oak Ridge Social Trail 1. Passive decommissioning treatments will include brush stacking near its intersection with Oak Ridge Road to deter further use.

#### Oak Ridge Social Trail 2 Decommissioning

Oak Ridge Social Trail 2 is a 0.15-mile / 781-foot-long trail, extending from Oak Ridge Road to the existing Memorial Trail. It is currently used by equestrians and hikers. The trail is deeply rutted and in poor condition. Decommissioning actions will include total slope recontouring to the extent possible for the entire length of the trail, and the installation of cross drains at approximately 50-foot intervals. Following these decommissioning treatments, native grass seed and mulch products would be installed to protect the soil and promote revegetation, and downed brush and other organics would be placed across the decommissioned corridor as obstacles to prohibit further use.

Additionally I am concerned about cars parking in front of my house or on my land. We have vendors that regularly have to be towed out from in front of my house because they back into the soil and get stuck. If you have more cars park there, there will be more likelihood tow trucks needing to come to get random people out.

I do not think that you should be advertising this trail on the maps. Where are people going to park?

I need to understand what you are proposing to do to

my land to decommission it.

In an email sent from LIRA it stated that you said you spoke with the necessary people adjacent to this project. I have not heard from all of you in a clear way in a long time. The original guy that came out and spoke with me (years ago) was trying to have me give up my land to develop for this trail, without giving any real compensation and saying the process will take years for me and that I will probably have a negative result.

I am concerned.

You can [edit this submission](#) and [view all your submissions](#) easily.

Email Disclaimer: <https://www.marincounty.org/main/disclaimers>

Email Disclaimer: <https://www.marincounty.org/main/disclaimers>

**From:** [REDACTED]  
**To:** [Passantino, Rosemary](#); [Campo, Jon](#); [Julene, Michelle](#); [Hoorn, Jason](#)  
**Subject:** Re: IS/MND Public Comments Memorial Trail - Susan Gahry  
**Date:** Wednesday, July 06, 2022 8:24:59 PM

---



**IS/MND Public Comments Memorial Trail**

|          |  |
|----------|--|
| Name     | Susan Gahry  |
| Email    | [REDACTED]   |
| Zipcode  | 94903  |
| Comments | <p>First, the trail notice was extremely poor - it was in the middle of the trail off of Oak Ridge not on the street or on the top of the Memorial Trail or at the end of Diaz Way. I was lucky to see it. I have been hiking this trail since I have lived here - since 1994. In the winter, even when it is raining, I have never noticed any erosion or runoff on this trail. Thus, I question the need for doing this work. Were aerial photos from 30-40 years ago reviewed to verify the erosion? How will the poison oak, which is extremely prevalent, be controlled? Why are signs necessary - it seems a waste of money. Instead of signs, why not do some more fire control near these trails (use goats like in other areas) and have some dog waste boxes at the bottoms of these trails? This would be a better use of funds. A better use of funds would also be buying more land and leaving the trail as is. There is no need for improvement - this is a nice steep trail that is a nice workout to prepare for hiking in more strenuous environments (i.e, the high Sierra). Please leave our local trail alone, skip the signage, and use the money for fire control and dog waste control and buying more land. There is no trailhead parking on Oak Ridge and this trail does not need to be publicized. When we voted for Measure A, we did not vote for signs and trail publicity. We also do not want more rangers.</p> |

You can [edit this submission](#) and [view all your submissions](#) easily.

## Master Response 2

**From:** [Hoorn, Jason](#)  
**To:** [REDACTED] Ronald Zein  
**Cc:** [Campo, Jon](#); [Julene, Michelle](#); [Passantino, Rosemary](#)  
**Subject:** RE: Memorial Trail Improvement Project  
**Date:** Tuesday, June 28, 2022 5:57:01 AM

---

Hi Ronald,

I forgot to include the link. Here you go.

<https://www.parks.marincounty.org/projectsplans/road-and-trail-management/memorial-trail-terra-linda>

Best,

Jason



**Jason Hoorn**  
NATURAL RESOURCES COORDINATOR

Marin County Parks  
3501 Civic Center Drive, Suite 260  
San Rafael, CA 94903  
415 320 4610 Cell  
[JHoorn@marincounty.org](mailto:JHoorn@marincounty.org)  
[www.marincountyparks.org](http://www.marincountyparks.org)

Follow us on [Facebook](#), [Twitter](#), and [Instagram](#)

---

**From:** [Hoorn, Jason](#)  
**Sent:** Tuesday, June 28, 2022 5:55 AM  
**To:** [REDACTED]  
**Cc:** [Campo, Jon](#); [Julene, Michelle](#); [Passantino, Rosemary](#)  
**Subject:** RE: Memorial Trail Improvement Project

Hi Ronald,

Thank you for your email regarding the Memorial Trail Improvement Project. This project does not include any street improvements to Ridgewood Drive. Below is a link to the project on our website, where all updates will be posted. If you have any other questions please feel free to contact me.

Best regards,



**Jason Hoorn**  
NATURAL RESOURCES COORDINATOR

Marin County Parks  
3501 Civic Center Drive, Suite 260  
San Rafael, CA 94903  
415 320 4610 Cell  
[JHoorn@marincounty.org](mailto:JHoorn@marincounty.org)  
[www.marincountyparks.org](http://www.marincountyparks.org)

Follow us on [Facebook](#), [Twitter](#), and [Instagram](#)

---

**From:** [REDACTED]  
**Sent:** Monday, June 27, 2022 6:51 PM  
**To:** [Hoorn, Jason](#)  
**Subject:** Memorial Trail Improvement Project

Ronald Zien would like information about:

Mr Horn,

I live at the end of Ridgewood Drive, [REDACTED] to be exact. I received your flyer in the mail regarding Memorial Trail Improvement Project mail. I support the improvement however a few neighbors want to make the County build a ROUNDABOUT FOR VEHICLES at the end of Ridgewood and beginning of Open Space.

I AM APPOSED TO A ROUNDABOUT, because it would create a nightmare with vehicles parking and kids drinking, playing loud music, vehicular fender benders etc. I have seen this happen in other towns having worked in Law Enforcement for 25 years.

Please keep me updated and if you wish to contact me you can do so anytime by email or call at 415-794-5586.

Sincerely,  
Ronald Zien

[REDACTED]  
San Rafael

## Master Response 2 and 4

**From:** [REDACTED] Colleen Vergari  
**To:** [Hoorn, Jason](mailto:jhoorn@marincounty.org)  
**Cc:** [Campo, Jon](mailto:Campo, Jon); [Julene, Michelle](mailto:Julene, Michelle); [Passantino, Rosemary](mailto:Passantino, Rosemary)  
**Subject:** Re: TL/Sleepy Hollow improvement  
**Date:** Friday, July 08, 2022 1:21:44 PM  
**Attachments:** [E450D42A27D846EF82DD0F3E2B73CA70F2822584891.gif](#)

---

Thank you for the information! Have a nice weekend.

----- Forwarded message -----

**From:** **Hoorn, Jason** <[jhoorn@marincounty.org](mailto:jhoorn@marincounty.org)>  
**Date:** Thu, Jul 7, 2022 at 2:34 PM  
**Subject:** RE: TL/Sleepy Hollow improvement  
**To:** Colleen Vergari [REDACTED]  
**Cc:** Campo, Jon <[JCampo@marincounty.org](mailto:JCampo@marincounty.org)>, Julene, Michelle <[MJulene@marincounty.org](mailto:MJulene@marincounty.org)>, Passantino, Rosemary <[RPassantino@marincounty.org](mailto:RPassantino@marincounty.org)>

Hi Colleen,

After constructing the proposed trail alignment to provide sustainable access, we would decommission the existing social trail by implementing multiple closure techniques, such as decompacting the tread, applying native grass seed, erosion control blankets, and/or mulch where appropriate, recontouring to the native slope where appropriate, and applying native organic material to further protect the soil from erosion and to discourage use. The installation of signage and split rail fencing may also be employed to alert users that restoration efforts are underway and to please keep off of the area.

The new trail will gradually contour down the slope from the ridge above Devon, traverse the small drainages with bridge crossings, and approach its termination point at the street end of Malone from the interior of Open Space lands, rather than along the property boundary and directly behind your fence, as it does now.

Thanks,

Jason





**Jason Hoorn**

NATURAL RESOURCES COORDINATOR

Marin County Parks

3501 Civic Center Drive, Suite 260

San Rafael, CA 94903

415 320 4610 Cell

[JHoorn@marincounty.org](mailto:JHoorn@marincounty.org)

[www.marincountyparks.org](http://www.marincountyparks.org)

Follow us on [Facebook](#), [Twitter](#), and [Instagram](#)

---

**From:** [REDACTED]  
**Sent:** Thursday, July 7, 2022 2:02 PM  
**To:** [Hoorn, Jason](#)  
**Cc:** [Campo, Jon](#); [Julene, Michelle](#); [Passantino, Rosemary](#)  
**Subject:** Re: TL/Sleepy Hollow improvement

Thanks. What does it mean to decommission a trail? Our house is [REDACTED] Malone Lane and we have people (hikers and bikers) along the fence everyday. Is there work planned for the social trail and the hill behind our fence?

I appreciate your time.

Colleen

On Thu, Jul 7, 2022 at 6:34 AM Hoorn, Jason <[jhoorn@marincounty.org](mailto:jhoorn@marincounty.org)> wrote:

Hi Colleen,

Yes, we would decommission the current social trail that runs behind [REDACTED] Malone Lane, through the creek, and travels steeply up the hill.

Thanks,

Jason



**Jason Hoorn**

NATURAL RESOURCES COORDINATOR

Marin County Parks

3501 Civic Center Drive, Suite 260

San Rafael, CA 94903

415 320 4610 Cell

[JHoorn@marincounty.org](mailto:JHoorn@marincounty.org)

[www.marincountyparks.org](http://www.marincountyparks.org)

Follow us on [Facebook](#), [Twitter](#), and [Instagram](#)

---

**From:** [REDACTED]  
**Sent:** Wednesday, July 6, 2022 10:22 PM  
**To:** [Hoorn, Jason](#)  
**Cc:** [Campo, Jon](#); [Julene, Michelle](#); [Passantino, Rosemary](#)  
**Subject:** Re: TL/Sleepy Hollow improvement

Thanks Jason. I appreciate you pointing me to the correct pages. Are you planning to do any work the current social trail to decommission it?

Colleen

On Tue, Jun 28, 2022 at 6:15 AM Hoorn, Jason <[jhoorn@marincounty.org](mailto:jhoorn@marincounty.org)> wrote:

Hi Colleen,

Thank you for your email regarding the Memorial Trail Improvement Project. Below is a link to the Draft Initial Study/Mitigated Negative Declaration for the project on our website. On page 12 of the IS/MND there is a description of the proposed Malone Trail alignment, and a corresponding map on page 30 that shows the proposed trail alignment improvements. I hope this helps answer your question.

<https://www.parks.marincounty.org/-/media/files/sites/marin-county-parks/projects-and-plans/road-and-trail-management/memorial-trail-terra-linda/2022063memorialtrailimprovementproject-draftismnd.pdf?la=en>

Please feel free to reach out with any additional project inquiries.

Best regards,



**Jason Hoorn, CPESC #6786**

NATURAL RESOURCES COORDINATOR

Marin County Parks

[3501 Civic Center Drive, Suite 260](#)

[San Rafael, CA 94903](#)

415 320 4610 Cell

[JHoorn@marincounty.org](mailto:JHoorn@marincounty.org)

[www.marincountyparks.org](http://www.marincountyparks.org)

Follow us on [Facebook](#), [Twitter](#), and [Instagram](#)

---

**From:** [REDACTED]  
**Sent:** Monday, June 27, 2022 9:10 PM  
**To:** [Hoorn, Jason](#)  
**Subject:** TL/Sleepy Hollow improvement

Hi Jason,

We live on Malone Lane and received the notice of proposed improvements. We don't use the trail very often as it is really steep in parts. The letter mentions erosion which is a concern of ours since we live next to the trail. Is there a place to see the proposed realignment?

Thanks!

Colleen

Email Disclaimer: <https://www.marincounty.org/main/disclaimers>

Email Disclaimer: <https://www.marincounty.org/main/disclaimers>

Email Disclaimer: <https://www.marincounty.org/main/disclaimers>

# Master Response 3

**From:** [REDACTED]  
**To:** [Passantino, Rosemary](#); [Campo, Jon](#); [Julene, Michelle](#); [Hoorn, Jason](#)  
**Subject:** Re: IS/MND Public Comments Memorial Trail - Chris Matthews  
**Date:** Wednesday, July 13, 2022 1:39:14 PM

---



## IS/MND Public Comments Memorial Trail

|          |   |
|----------|---|
| Name     | Chris Matthews  |
| Email    | [REDACTED]  |
| Zipcode  | 94903   |
| Comments | What is the plan for parking rules or guidelines in or around the trail start/finish locations?<br><br>Will the dead end termination at Dias Way have any physical changes? |

You can [edit this submission](#) and [view all your submissions](#) easily.

**From:** [REDACTED]  
**To:** [Passantino, Rosemary](#); [Campo, Jon](#); [Julene, Michelle](#); [Hoorn, Jason](#)  
**Subject:** Re: IS/MND Public Comments Memorial Trail - Brian Ghidinelli  
**Date:** Friday, June 17, 2022 9:05:30 PM

---



## IS/MND Public Comments Memorial Trail

|          |   |
|----------|---|
| Name     | Brian Ghidinelli  |
| Email    | [REDACTED]  |
| Zipcode  | 94903   |
| Comments | <p>Hello MCOSD,</p> <p>As a resident on Arcangel Way which is directly adjacent to the proposed Del Haro trailhead, I want to voice my support for this Memorial Trail realignment.</p> <p>My family and I routinely hike up this hill. It is steep, eroded, and at times very difficult to maintain sure footing. As a mountain biker, I would also like to be able to access the ridgeline via this path and applaud the effort to make the trail multi-purpose, inclusive and equitable.</p> <p>I would ask whether the spur to Dais way could not also retain multi-use for bike and equestrian use as well in order to disperse local access?</p> <p>Regardless, thank you for pursuing this. You have our full support as a neighbor and user of the MCOSD trail system.</p> <p>Brian</p> |

You can [edit this submission](#) and [view all your submissions](#) easily.