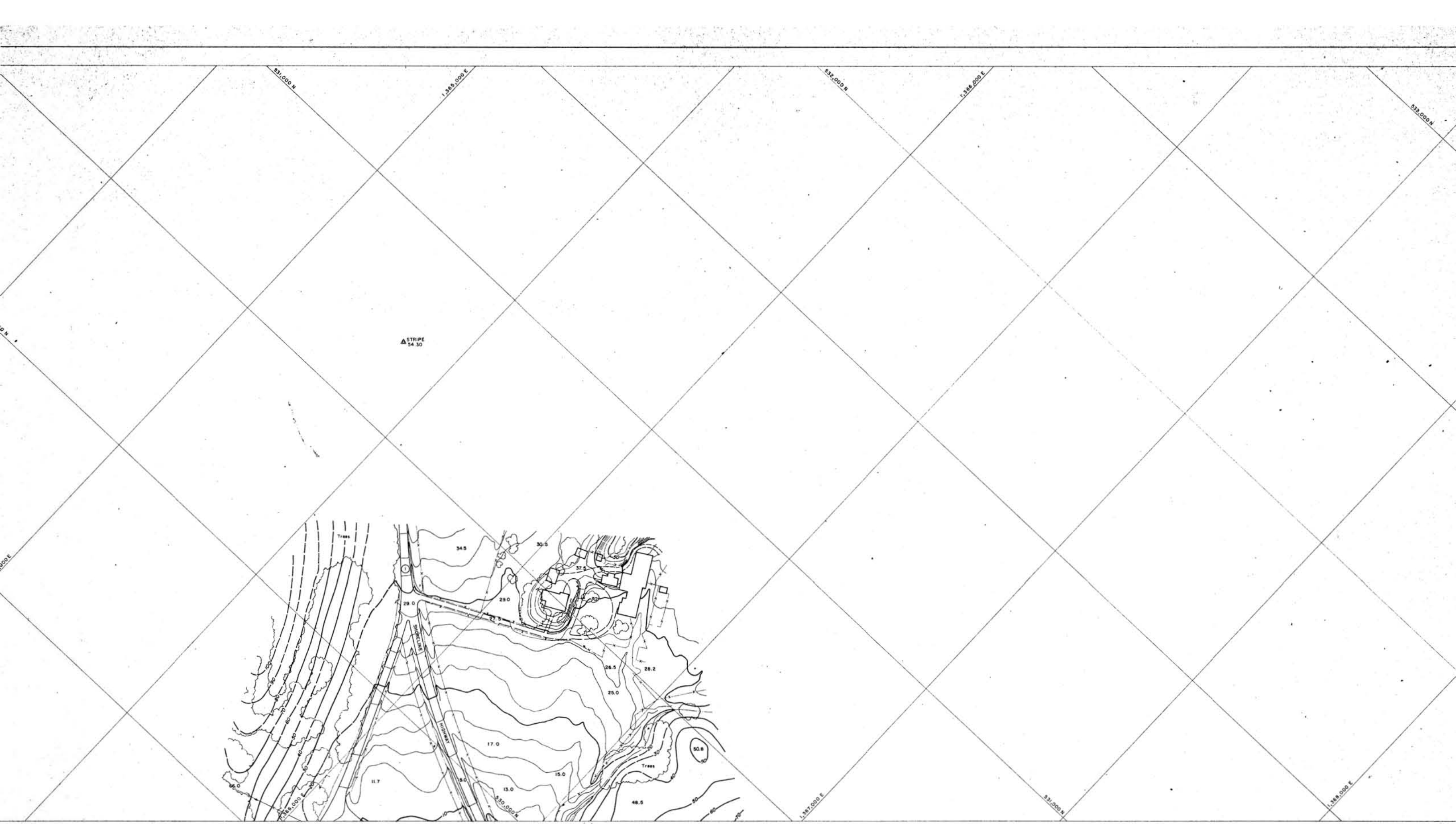


NOTE:
 GRID IS BASED ON CALIFORNIA COORDINATE SYSTEM, ZONE 3.
 FIELD SURVEY CONTROL BY R. M. TOWILL CORPORATION
 ELEVATIONS ARE BASED ON MEAN SEA LEVEL DATUM, 1929 ADJ.



SHEET INDEX OF BOLINAS LAGOON FOR COUNTY OF MARIN & BOLINAS HARBOR		
SCALE 1"=1000'		
R. M. TOWILL CORPORATION 412 HOWARD STREET, SAN FRANCISCO, CALIF.	DATE OF PHOTOGRAPHY MAY 16, 1968	JOB NO. 4-82771-0

copy



0.1
0.000 E

531,000 N

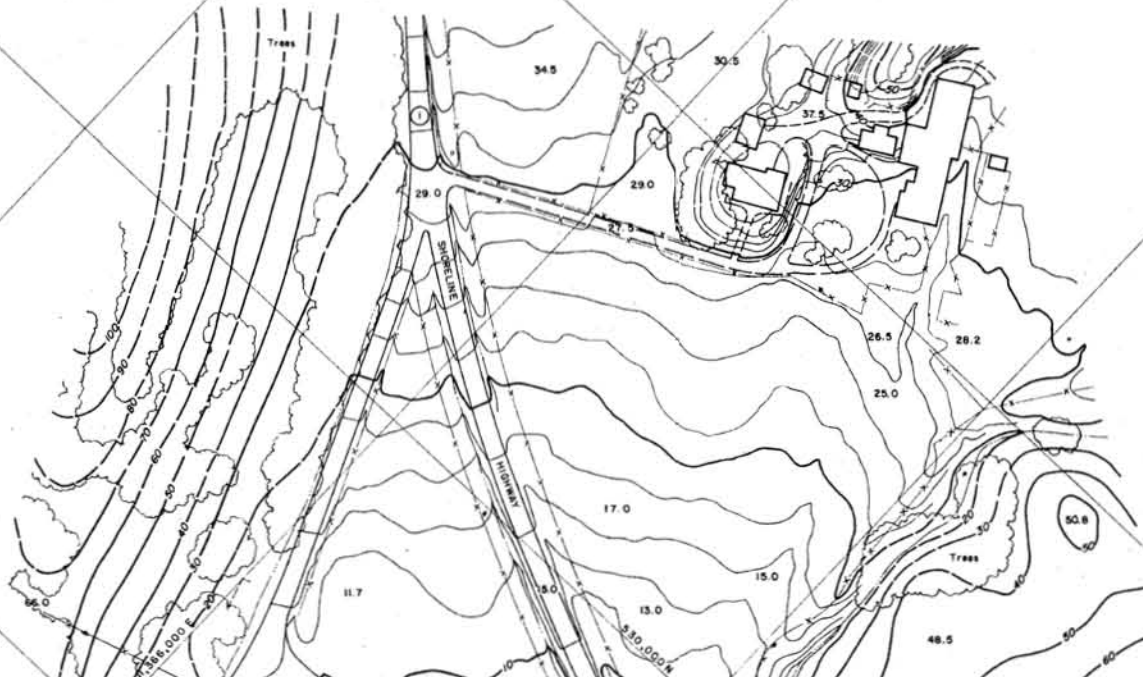
1,385,000 E

532,000 N

1,388,000 E

533,000 N

▲ STRIPE
54 30



1,387,000 E

531,000 N

1,388,000 E

	Spot Elevation
	Boundary
	Contour
	Road
	Stream
	Tree
	Shoreline
	Tripe
	Spot Elevation
	Boundary
	Contour
	Road
	Stream
	Tree
	Shoreline
	Tripe

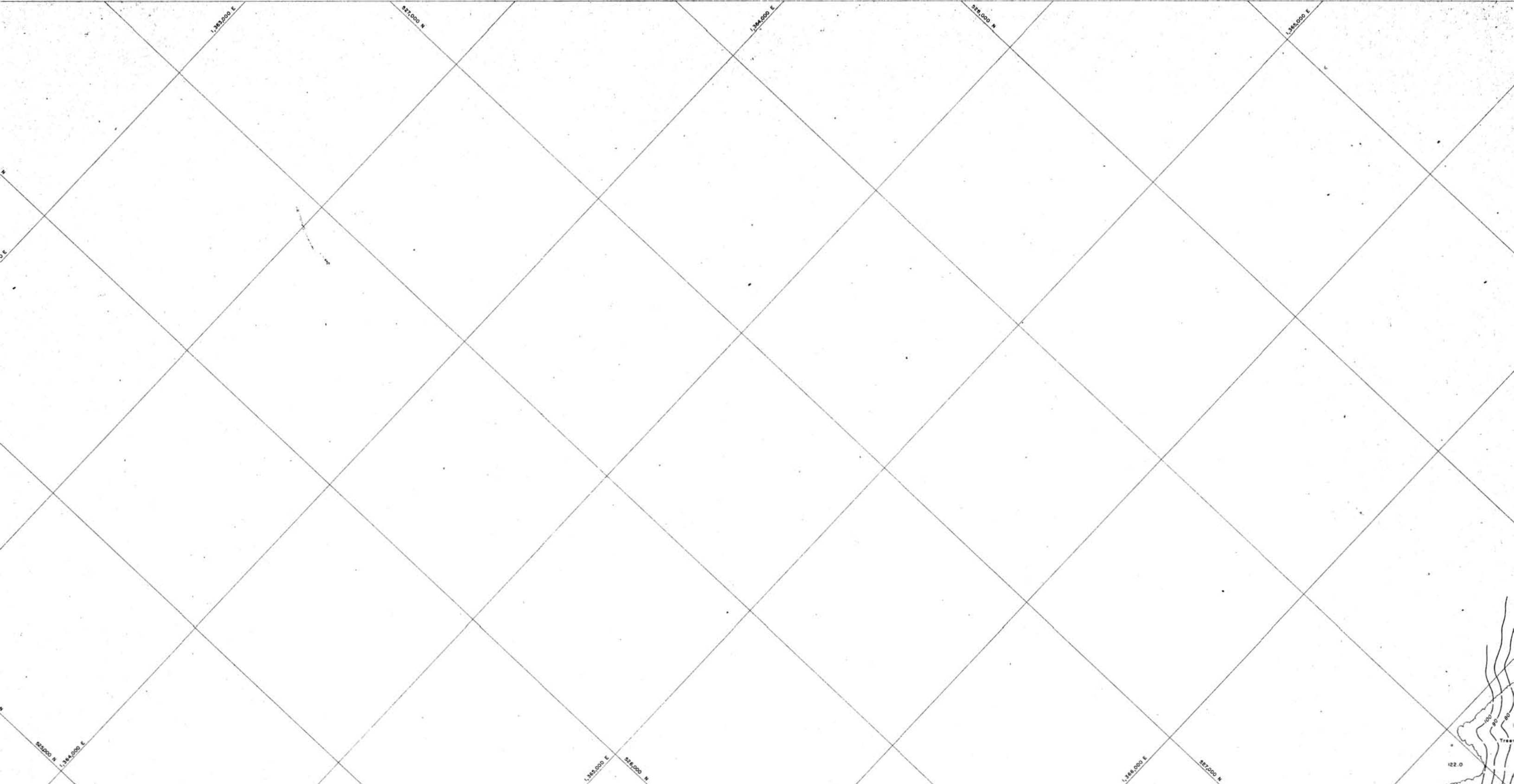
IN OPEN UNOBSTRUCTED AREAS, THIS MAP COMPLIES WITH NATIONAL STANDARDS FOR MAP ACCURACY.

IN AREAS OF DENSE VEGETATION WHERE THE GROUND IS OBSCURED FROM VIEW, CONTOURS MAY DEVIATE FROM CORRECT ELEVATION BY ONE HALF THE HEIGHT OF THE COVER.



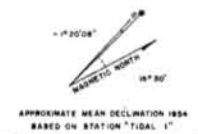
APPROXIMATE MEAN DECLINATION 1964
BASED ON STATION TIDAL 1"

TOPOGRAPHIC MAP OF BOLINAS LAGOON FOR COUNTY OF MARIN & BOLINAS HARBOR		
SCALE 1"=100'		CONTOUR INTERVAL 2'
R. M. TOWELL CORPORATION 412 HOWARD STREET, SAN FRANCISCO, CALIF.		DATE OF PHOTOGRAPHY MAY 16, 1968
		JOB NO. 4-82771-D

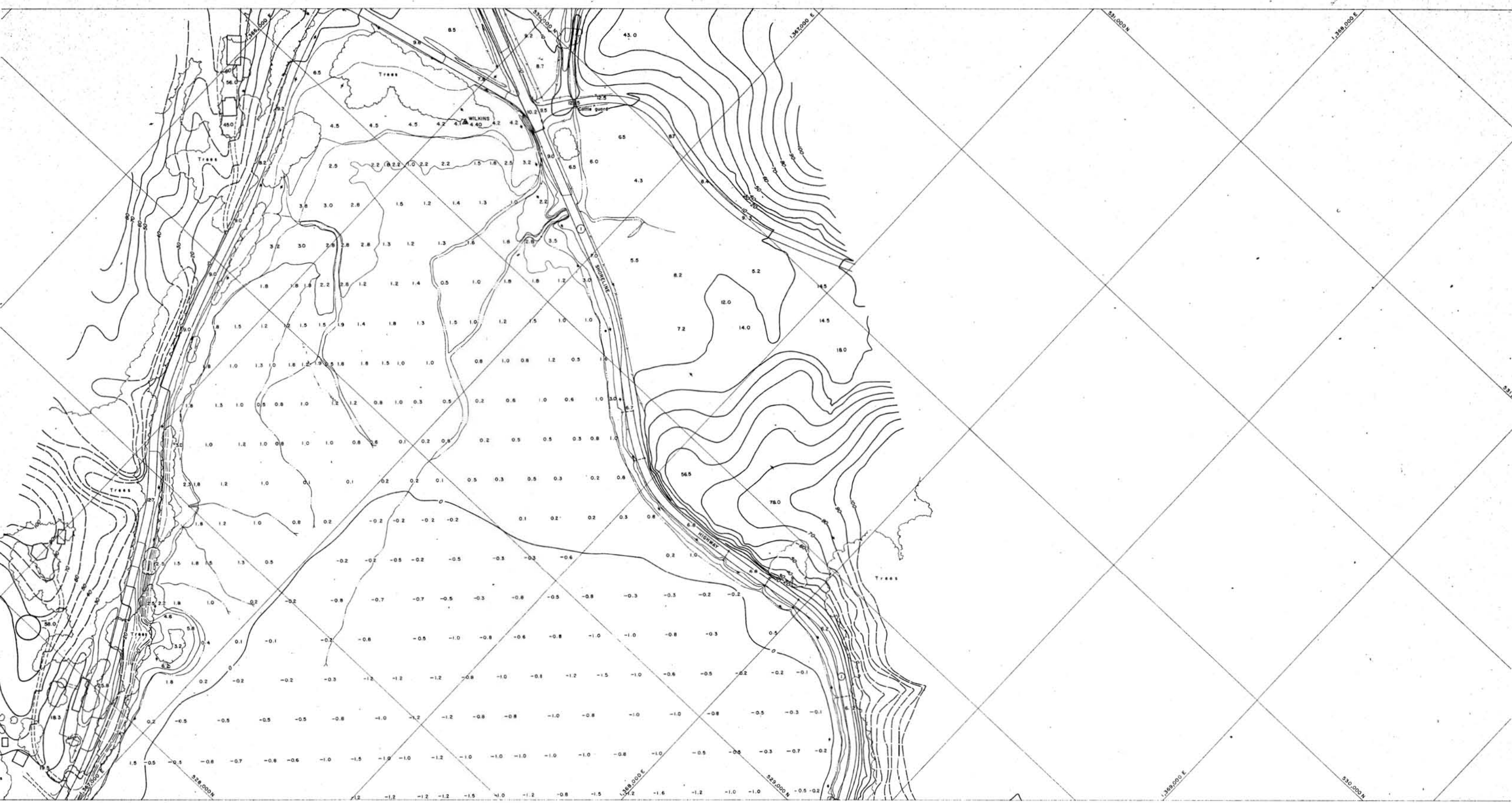


<p>LEGEND</p> <p>Topographic symbols for contours, spot elevations, and other features.</p>	
<p>Contour Interval: 20'</p> <p>Spot Elevation: 122.0</p>	<p>North Arrow</p> <p>Scale: 1" = 100'</p>

IN OPEN UNOBSTRUCTED AREAS, THIS MAP COMPLIES WITH NATIONAL STANDARDS FOR MAP ACCURACY.
 IN AREAS OF DENSE VEGETATION WHERE THE GROUND IS OBSCURED FROM VIEW, CONTOURS MAY DEVIATE FROM CORRECT ELEVATION BY ONE HALF THE HEIGHT OF THE COVER.

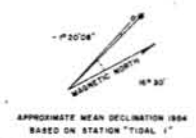


TOPOGRAPHIC MAP OF		
BOLINAS LAGOON		
FOR		
COUNTY OF MARIN & BOLINAS HARBOR		
SCALE 1"=100'	CONTOUR INTERVAL 20'	
R. M. TOWILL CORPORATION 42 HOWARD STREET, SAN FRANCISCO, CALIF.	DATE OF PHOTOGRAPHY MAY 16, 1968	JOB NO. 4-82771-0

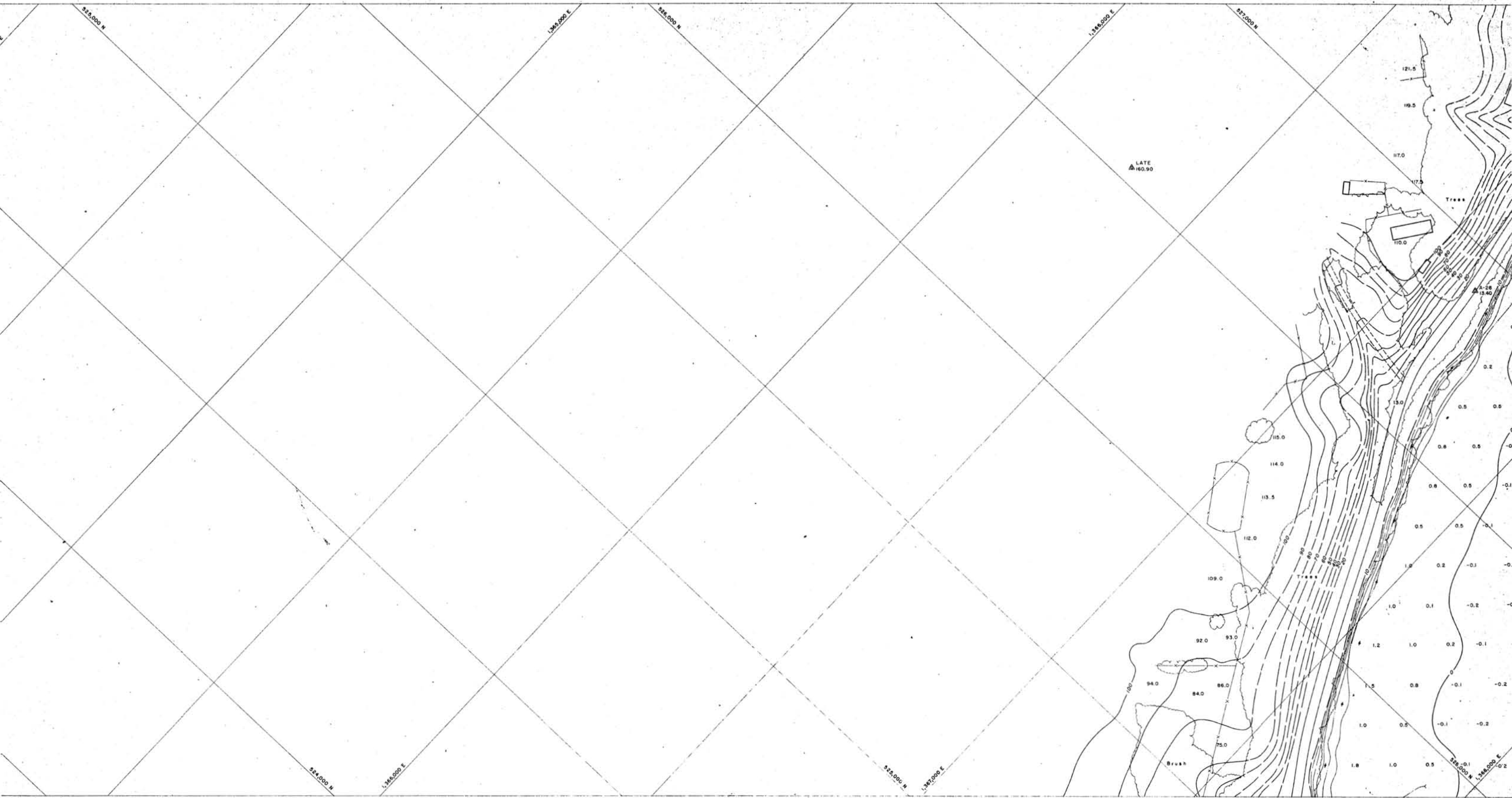


- 1. Contour Interval 2'
- 2. Spot Elevation
- 3. Elevation of Water
- 4. Elevation of Land
- 5. Elevation of Building
- 6. Elevation of Road
- 7. Elevation of Railroad
- 8. Elevation of Canal
- 9. Elevation of Ditch
- 10. Elevation of Embankment
- 11. Elevation of Cut
- 12. Elevation of Bridge
- 13. Elevation of Tunnel
- 14. Elevation of Pier
- 15. Elevation of Wharf
- 16. Elevation of Dock
- 17. Elevation of Quay
- 18. Elevation of Jetty
- 19. Elevation of Breakwater
- 20. Elevation of Light
- 21. Elevation of Beacon
- 22. Elevation of Buoy
- 23. Elevation of Spar
- 24. Elevation of Tower
- 25. Elevation of Monument
- 26. Elevation of Obelisk
- 27. Elevation of Pyramid
- 28. Elevation of Sphere
- 29. Elevation of Cylinder
- 30. Elevation of Cone
- 31. Elevation of Hemisphere
- 32. Elevation of Ellipsoid
- 33. Elevation of Paraboloid
- 34. Elevation of Hyperboloid
- 35. Elevation of Spheroid
- 36. Elevation of Torus
- 37. Elevation of Ring
- 38. Elevation of Arch
- 39. Elevation of Vault
- 40. Elevation of Dome
- 41. Elevation of Cupola
- 42. Elevation of Lantern
- 43. Elevation of Spire
- 44. Elevation of Steeple
- 45. Elevation of Tower
- 46. Elevation of Spire
- 47. Elevation of Steeple
- 48. Elevation of Tower
- 49. Elevation of Spire
- 50. Elevation of Steeple

IN OPEN UNOBSTRUCTED AREAS, THIS MAP COMPLIES WITH NATIONAL STANDARDS FOR MAP ACCURACY.
 IN AREAS OF DENSE VEGETATION WHERE THE GROUND IS OBSCURED FROM VIEW, CONTOURS MAY DEVIATE FROM CORRECT ELEVATION BY ONE HALF THE HEIGHT OF THE COVER.

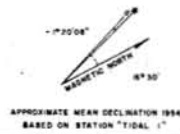


TOPOGRAPHIC MAP OF BOLINAS LAGOON FOR COUNTY OF MARIN & BOLINAS HARBOR		
SCALE 1"=100'	CONTOUR INTERVAL 2'	
R. M. TOWILL CORPORATION 818 HOWARD STREET, SAN FRANCISCO, CALIF.	DATE OF PHOTOGRAPHY MAY 16, 1968	JOB NO. 4-82771-0

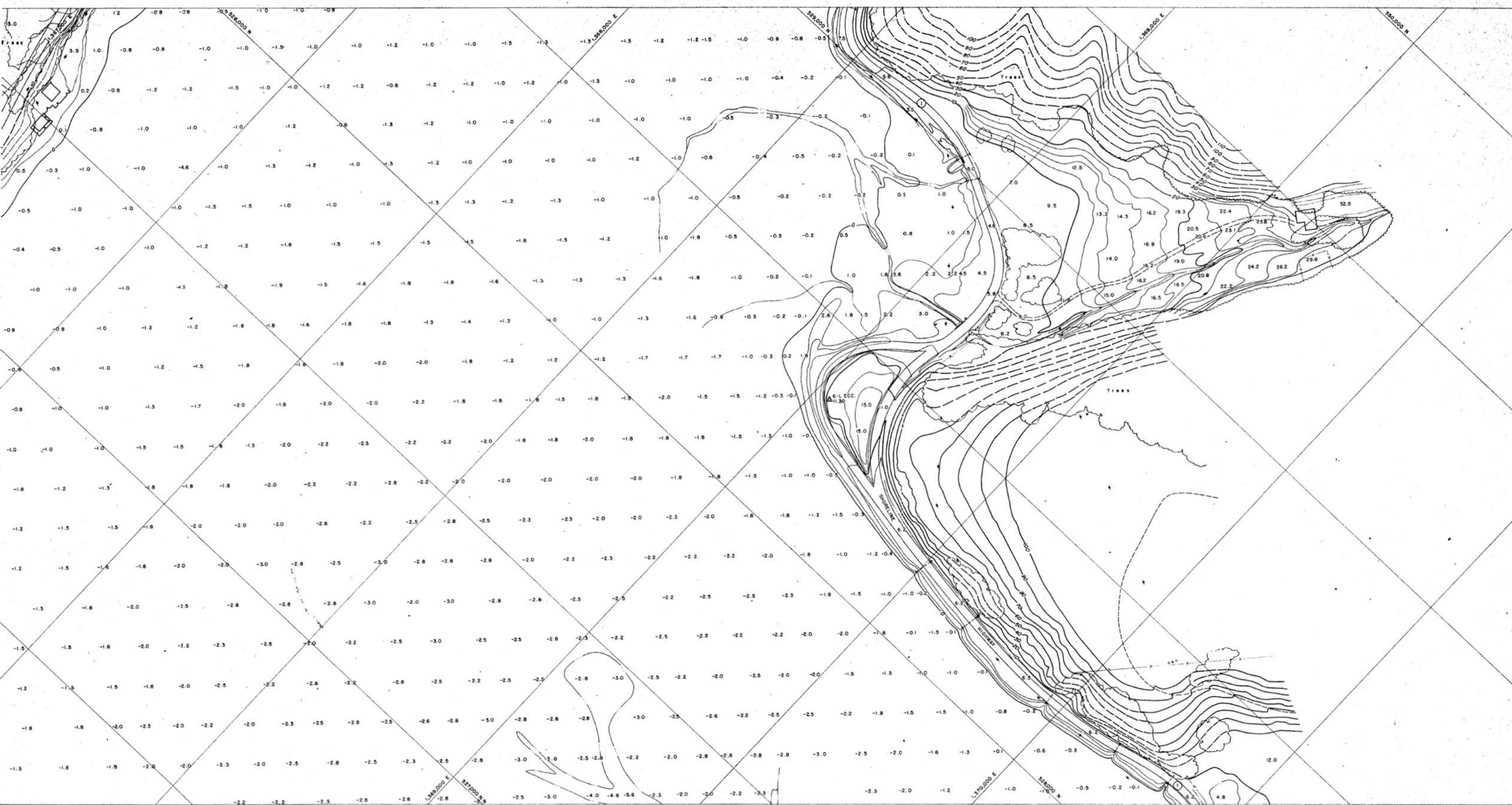


	BENCHMARK
	SPOT ELEVATION
	CONTOUR LINE
	STREAM
	ROAD
	FENCE
	BOUNDARY
	VEGETATION
	BUILDING
	STRUCTURE
	TOWER
	ANTENNA
	TOWER WITH ANTENNA
	TOWER WITH ANTENNA AND GUY WIRES
	TOWER WITH ANTENNA AND GUY WIRES AND GUY ANCHORS
	TOWER WITH ANTENNA AND GUY WIRES AND GUY ANCHORS AND GUY ANCHORS
	TOWER WITH ANTENNA AND GUY WIRES AND GUY ANCHORS AND GUY ANCHORS AND GUY ANCHORS

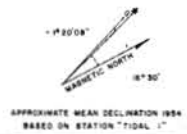
IN OPEN UNOBSTRUCTED AREAS, THIS MAP COMPLIES WITH NATIONAL STANDARDS FOR MAP ACCURACY.
 IN AREAS OF DENSE VEGETATION WHERE THE GROUND IS OBSCURED FROM VIEW, CONTOURS MAY DEVIATE FROM CORRECT ELEVATION BY ONE HALF THE HEIGHT OF THE COVER.



TOPOGRAPHIC MAP OF BOLINAS LAGOON FOR COUNTY OF MARIN & BOLINAS HARBOR		
SCALE 1"=100'		CONTOUR INTERVAL
PL M TOWILL CORPORATION 812 HOWARD STREET, SAN FRANCISCO, CALIF	DATE OF PHOTOGRAPHY MAY 15, 1968	JOB NO. 4-82771-0



IN OPEN UNOBSTRUCTED AREAS, THIS MAP COMPLIES WITH NATIONAL STANDARDS FOR MAP ACCURACY.
 IN AREAS OF DENSE VEGETATION WHERE THE GROUND IS OBSCURED FROM VIEW, CONTOURS MAY DEVIATE FROM CORRECT ELEVATION BY ONE HALF THE HEIGHT OF THE COVER.

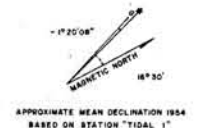


TOPOGRAPHIC MAP OF BOLINAS LAGOON FOR COUNTY OF MARIN & BOLINAS HARBOR		
SCALE 1" = 100'		CONTOUR INTERVAL
T. M. TOWILL CORPORATION 818 HOWARD STREET, SAN FRANCISCO, CALIF.	DATE OF PHOTOGRAPHY MAY 16, 1968	JOB NO. 4-82771-0

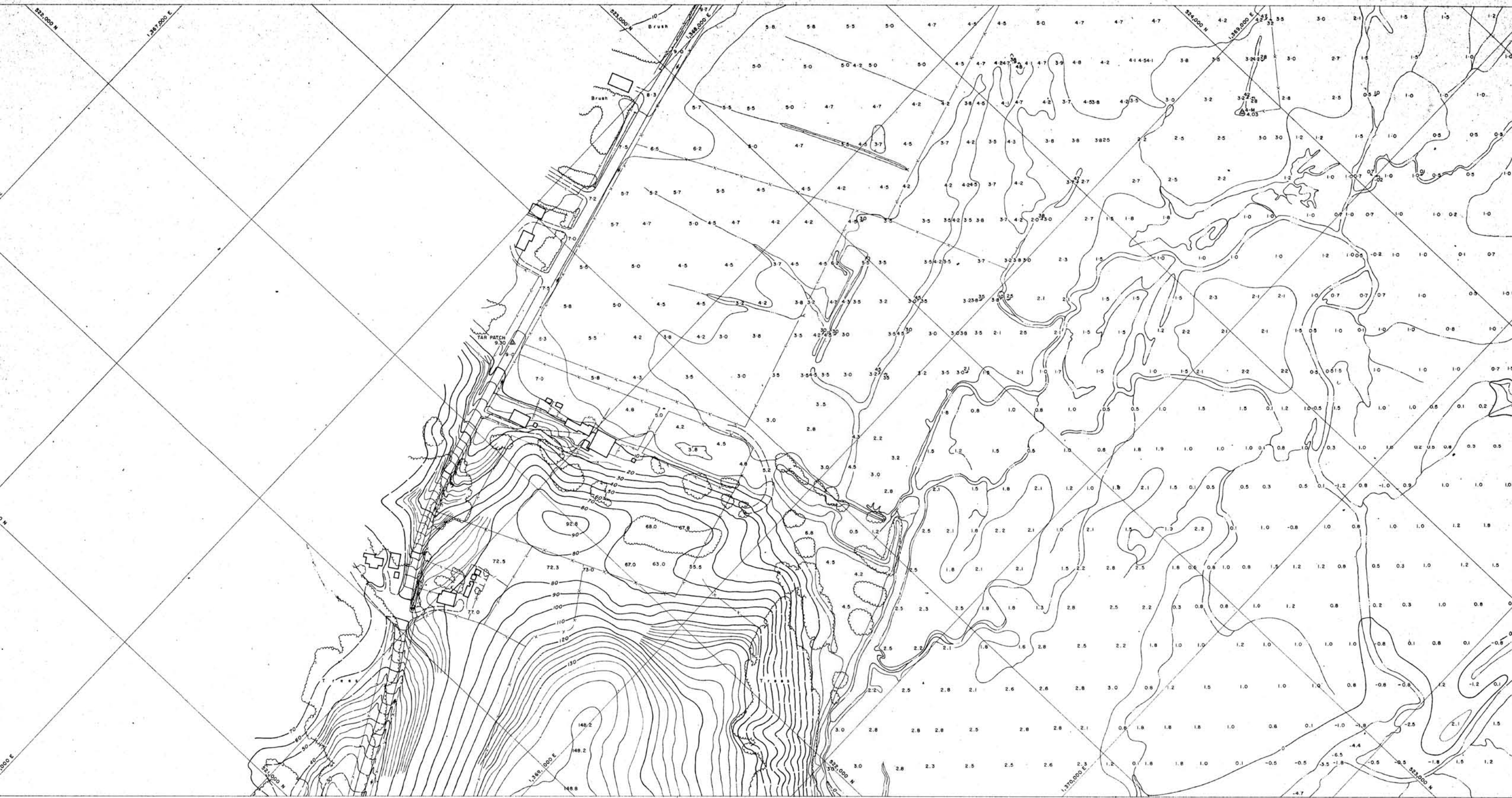
copy



IN OPEN UNOBSTRUCTED AREAS, THIS MAP COMPLIES WITH NATIONAL STANDARDS FOR MAP ACCURACY.
 IN AREAS OF DENSE VEGETATION WHERE THE GROUND IS OBSCURED FROM VIEW, CONTOURS MAY DEVIATE FROM CORRECT ELEVATION BY ONE HALF THE HEIGHT OF THE COVER.

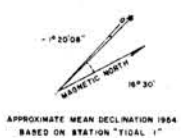


TOPOGRAPHIC MAP OF BOLINAS LAGOON		
FOR COUNTY OF MARIN & BOLINAS HARBOR		
SCALE 1"=100'	CONTOUR INTERVAL 2'	
R. M. TOWILL CORPORATION 812 HOWARD STREET, SAN FRANCISCO, CALIF.	DATE OF PHOTOGRAPHY MAY 16, 1968	JOB NO. 4-82771-0



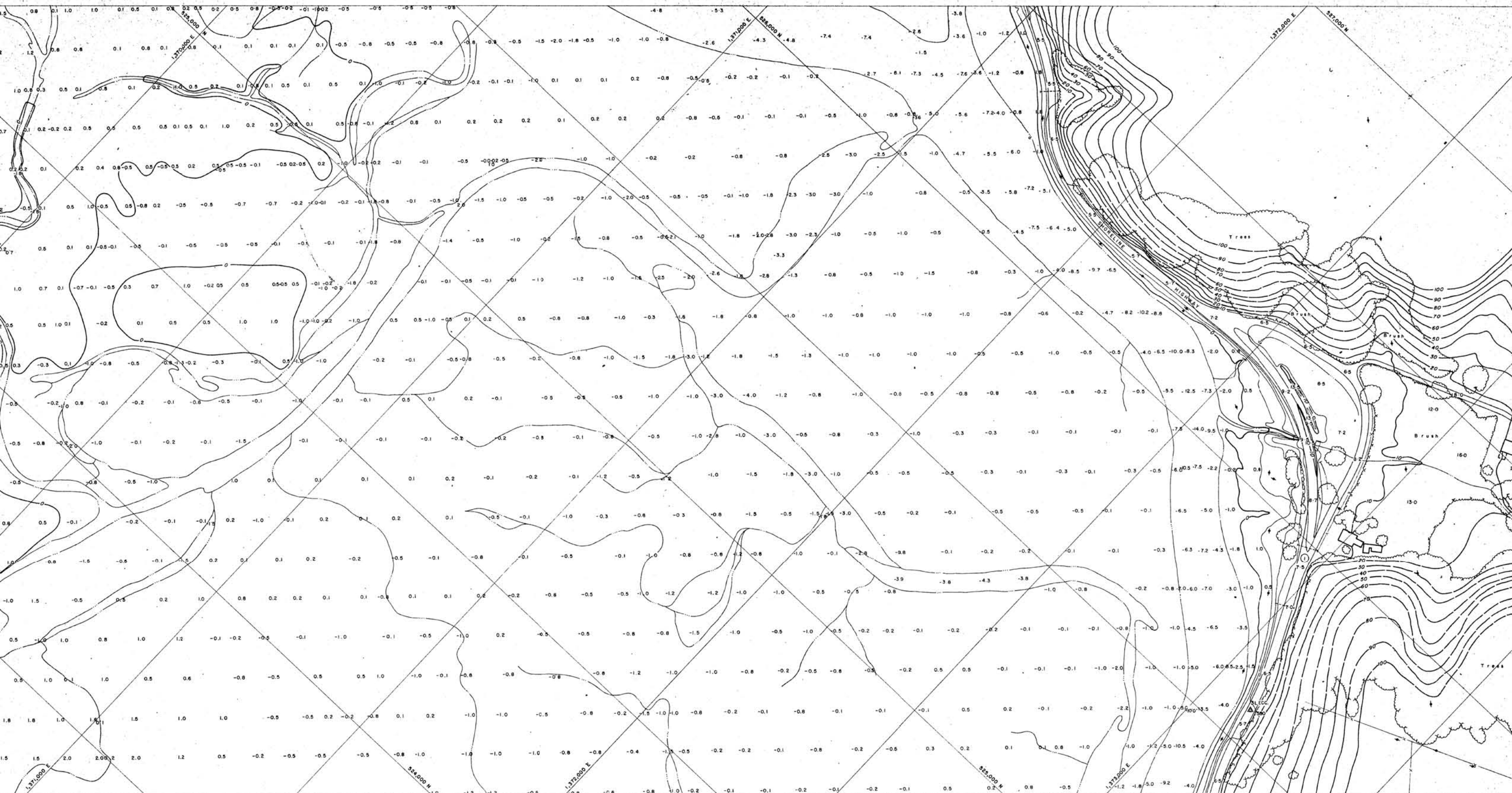
SYMBOL	DESCRIPTION
[Symbol]	Contour Interval
[Symbol]	Spot Elevation
[Symbol]	Water
[Symbol]	Marsh
[Symbol]	Open Area
[Symbol]	Buildings
[Symbol]	Highway
[Symbol]	Railroad
[Symbol]	Power Line
[Symbol]	Telephone Line
[Symbol]	Boundary
[Symbol]	Spot Elevation
[Symbol]	Contour Interval
[Symbol]	Water
[Symbol]	Marsh
[Symbol]	Open Area
[Symbol]	Buildings
[Symbol]	Highway
[Symbol]	Railroad
[Symbol]	Power Line
[Symbol]	Telephone Line
[Symbol]	Boundary

IN OPEN UNOBSTRUCTED AREAS, THIS MAP COMPLIES WITH NATIONAL STANDARDS FOR MAP ACCURACY.
 IN AREAS OF DENSE VEGETATION WHERE THE GROUND IS OBSCURED FROM VIEW, CONTOURS MAY DEVIATE FROM CORRECT ELEVATION BY ONE HALF THE HEIGHT OF THE COVER.



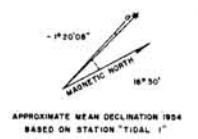
APPROXIMATE MEAN DECLINATION 1964
 BASED ON STATION "TIDAL 1"

TOPOGRAPHIC MAP OF BOLINAS LAGOON FOR COUNTY OF MARIN & BOLINAS HARBOR		
SCALE 1"=100'	CONTOUR INTERVAL	
R. M. TOWILL CORPORATION 415 HOWARD STREET, SAN FRANCISCO, CALIF.	DATE OF PHOTOGRAPHY MAY 16, 1968	JOB NO. 4-82771-C



	Spot Elevation
	Contour Line
	Stream
	Road
	Fence
	Building
	Tree
	Brush
	Lagoon
	Boundary
	Spot Elevation
	Contour Line
	Stream
	Road
	Fence
	Building
	Tree
	Brush
	Lagoon
	Boundary

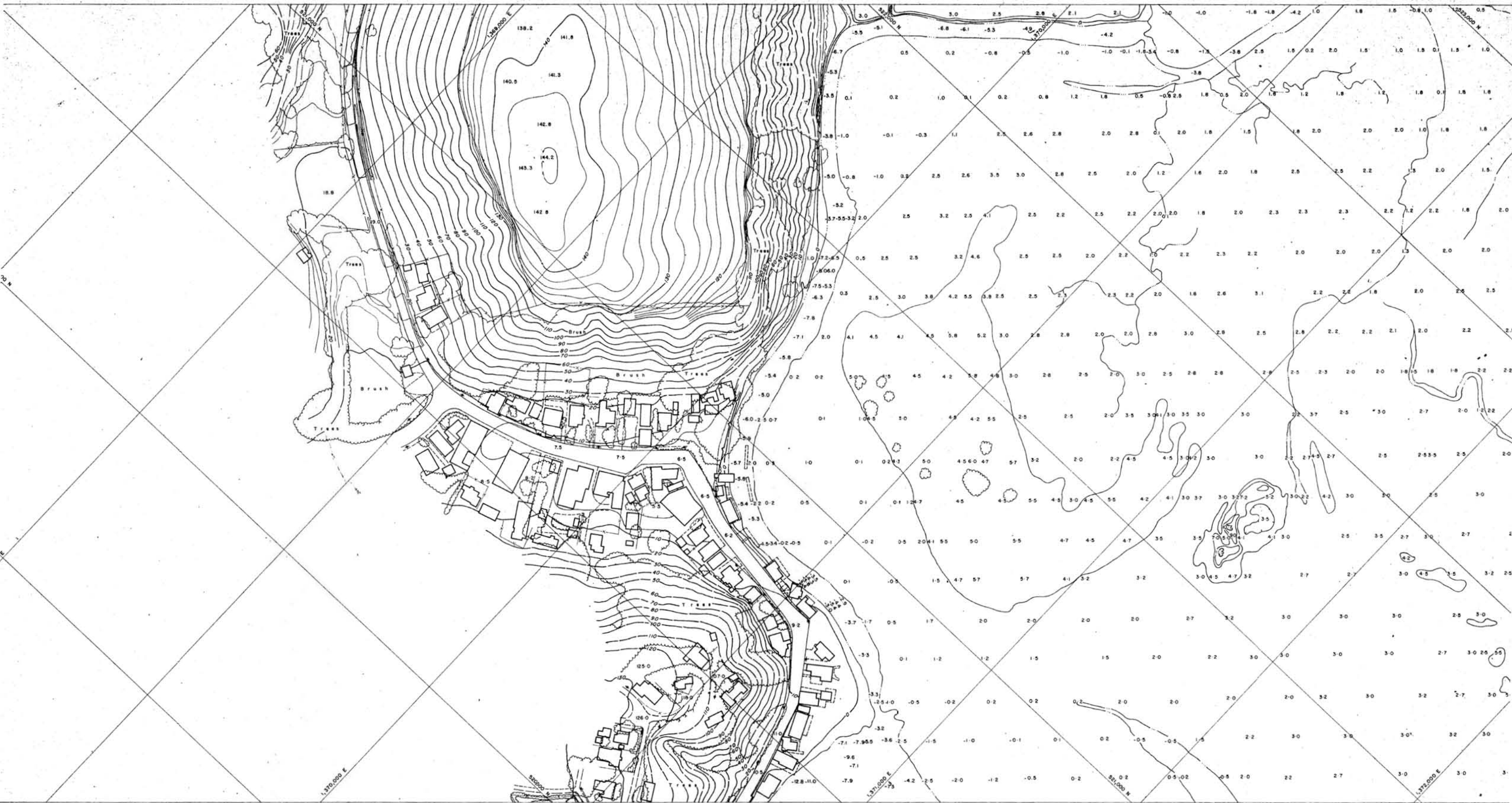
IN OPEN UNOBSTRUCTED AREAS, THIS MAP COMPLIES WITH NATIONAL STANDARDS FOR MAP ACCURACY.
 IN AREAS OF DENSE VEGETATION WHERE THE GROUND IS OBSCURED FROM VIEW, CONTOURS MAY DEVIATE FROM CORRECT ELEVATION BY ONE HALF THE HEIGHT OF THE COVER.



TOPOGRAPHIC MAP OF
BOLINAS LAGOON
 FOR
COUNTY OF MARIN & BOLINAS HARBOR

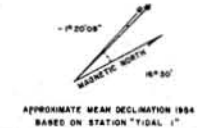
SCALE 1"=100' CONTOUR INTERVAL 2'

R. M. TOWILL CORPORATION 412 HOWARD STREET, SAN FRANCISCO, CALIF.	DATE OF PHOTOGRAPHY MAY 16, 1968	JOB NO. 4-82771-0
--	-------------------------------------	----------------------

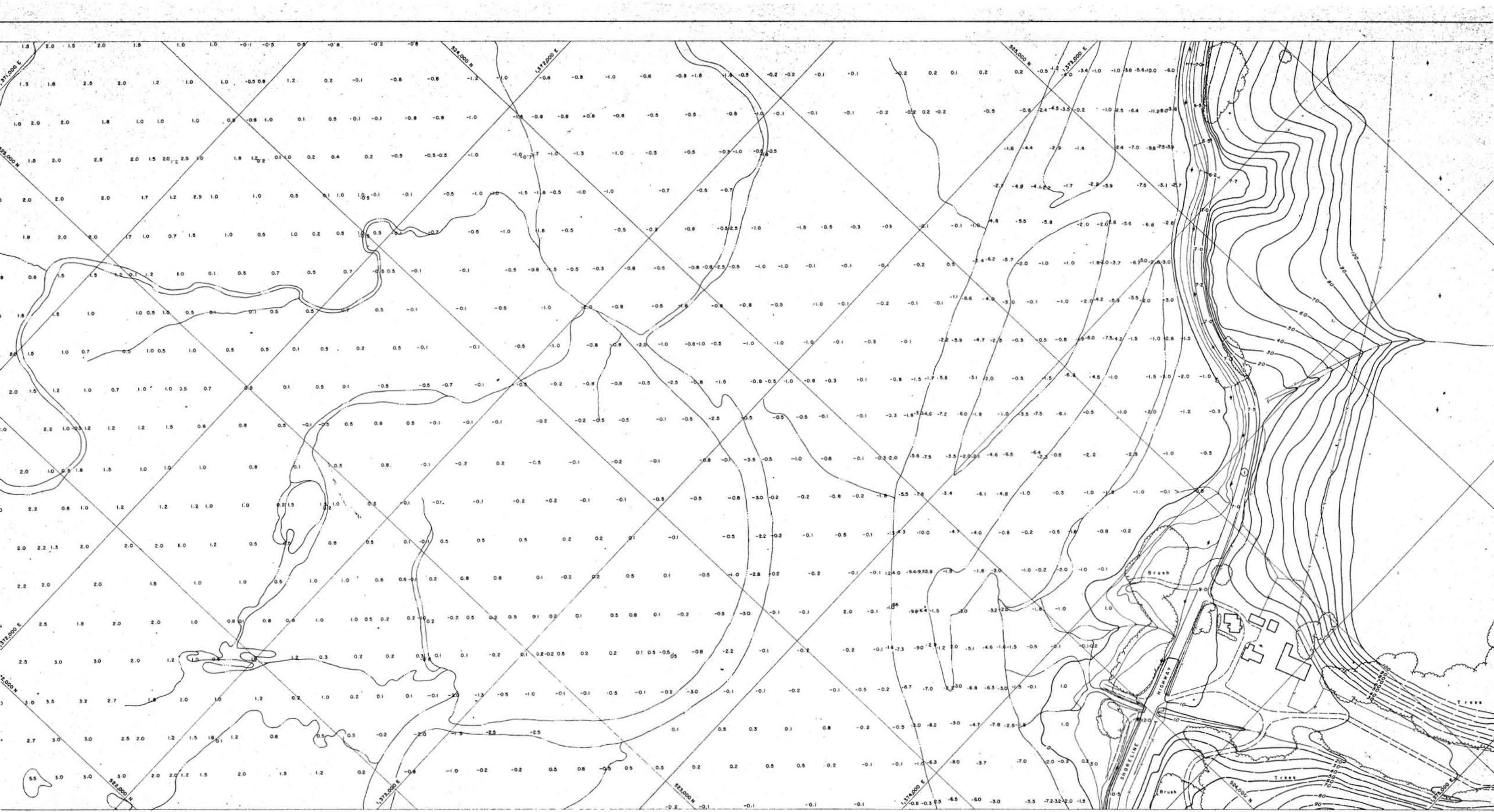


- 1. Contour Interval: 5 feet
- 2. Spot Elevation: 100.0
- 3. Building Footprint
- 4. Road
- 5. Stream
- 6. Lagoon
- 7. Trees
- 8. Brush
- 9. Fenced Area
- 10. Utility Line
- 11. Elevation of 100 feet
- 12. Elevation of 110 feet
- 13. Elevation of 120 feet
- 14. Elevation of 130 feet
- 15. Elevation of 140 feet
- 16. Elevation of 150 feet
- 17. Elevation of 160 feet
- 18. Elevation of 170 feet
- 19. Elevation of 180 feet
- 20. Elevation of 190 feet
- 21. Elevation of 200 feet
- 22. Elevation of 210 feet
- 23. Elevation of 220 feet
- 24. Elevation of 230 feet
- 25. Elevation of 240 feet
- 26. Elevation of 250 feet
- 27. Elevation of 260 feet
- 28. Elevation of 270 feet
- 29. Elevation of 280 feet
- 30. Elevation of 290 feet
- 31. Elevation of 300 feet
- 32. Elevation of 310 feet
- 33. Elevation of 320 feet
- 34. Elevation of 330 feet
- 35. Elevation of 340 feet
- 36. Elevation of 350 feet
- 37. Elevation of 360 feet
- 38. Elevation of 370 feet
- 39. Elevation of 380 feet
- 40. Elevation of 390 feet
- 41. Elevation of 400 feet
- 42. Elevation of 410 feet
- 43. Elevation of 420 feet
- 44. Elevation of 430 feet
- 45. Elevation of 440 feet
- 46. Elevation of 450 feet
- 47. Elevation of 460 feet
- 48. Elevation of 470 feet
- 49. Elevation of 480 feet
- 50. Elevation of 490 feet
- 51. Elevation of 500 feet
- 52. Elevation of 510 feet
- 53. Elevation of 520 feet
- 54. Elevation of 530 feet
- 55. Elevation of 540 feet
- 56. Elevation of 550 feet
- 57. Elevation of 560 feet
- 58. Elevation of 570 feet
- 59. Elevation of 580 feet
- 60. Elevation of 590 feet
- 61. Elevation of 600 feet
- 62. Elevation of 610 feet
- 63. Elevation of 620 feet
- 64. Elevation of 630 feet
- 65. Elevation of 640 feet
- 66. Elevation of 650 feet
- 67. Elevation of 660 feet
- 68. Elevation of 670 feet
- 69. Elevation of 680 feet
- 70. Elevation of 690 feet
- 71. Elevation of 700 feet
- 72. Elevation of 710 feet
- 73. Elevation of 720 feet
- 74. Elevation of 730 feet
- 75. Elevation of 740 feet
- 76. Elevation of 750 feet
- 77. Elevation of 760 feet
- 78. Elevation of 770 feet
- 79. Elevation of 780 feet
- 80. Elevation of 790 feet
- 81. Elevation of 800 feet
- 82. Elevation of 810 feet
- 83. Elevation of 820 feet
- 84. Elevation of 830 feet
- 85. Elevation of 840 feet
- 86. Elevation of 850 feet
- 87. Elevation of 860 feet
- 88. Elevation of 870 feet
- 89. Elevation of 880 feet
- 90. Elevation of 890 feet
- 91. Elevation of 900 feet
- 92. Elevation of 910 feet
- 93. Elevation of 920 feet
- 94. Elevation of 930 feet
- 95. Elevation of 940 feet
- 96. Elevation of 950 feet
- 97. Elevation of 960 feet
- 98. Elevation of 970 feet
- 99. Elevation of 980 feet
- 100. Elevation of 990 feet
- 101. Elevation of 1000 feet

IN OPEN UNOBSTRUCTED AREAS, THIS MAP COMPLIES WITH NATIONAL STANDARDS FOR MAP ACCURACY.
 IN AREAS OF DENSE VEGETATION WHERE THE GROUND IS OBSCURED FROM VIEW, CONTOURS MAY DEVIATE FROM CORRECT ELEVATION BY ONE HALF THE HEIGHT OF THE COVER.



TOPOGRAPHIC MAP OF BOLINAS LAGOON FOR COUNTY OF MARIN & BOLINAS HARE		
SCALE 1"=100'	CONTOUR INTER	
R. M. TOWILL CORPORATION 88 HOWARD STREET, SAN FRANCISCO, CALIF.	DATE OF PHOTOGRAPHY MAY 16, 1968	JOB NO. 4-8297



LEGEND

Spot Height	Contour	Water	Vegetation	Buildings	Highway	Storeline	Coastline
...

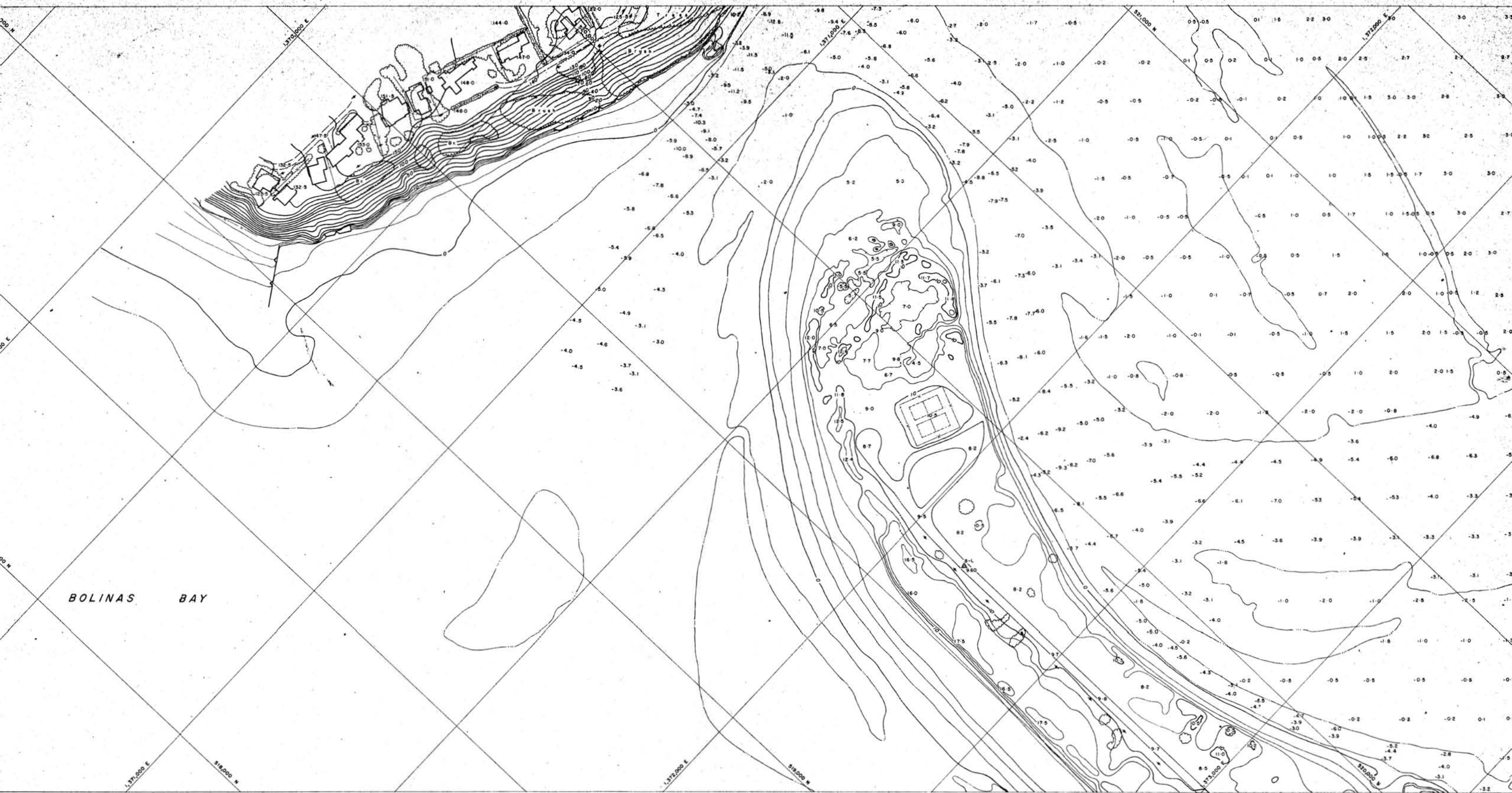
IN OPEN UNOBSTRUCTED AREAS, THIS MAP COMPLIES WITH NATIONAL STANDARDS FOR MAP ACCURACY.
 IN AREAS OF DENSE VEGETATION WHERE THE GROUND IS OBSCURED FROM VIEW, CONTOURS MAY DEVIATE FROM CORRECT ELEVATION BY ONE HALF THE HEIGHT OF THE COVER.



APPROXIMATE MEAN DECLINATION 1984
 BASED ON STATION "TIDAL 1"

TOPOGRAPHIC MAP OF
BOLINAS LAGOON
 FOR
COUNTY OF MARIN & BOLINAS HARBOR

SCALE 1"=100'	CONTOUR INTERVAL 2'
R. M. TOWILL CORPORATION 80 HOBART STREET, SAN FRANCISCO, CALIF.	
DATE OF PHOTOGRAPHY MAY 16, 1968	JOB NO. 4-82771-D

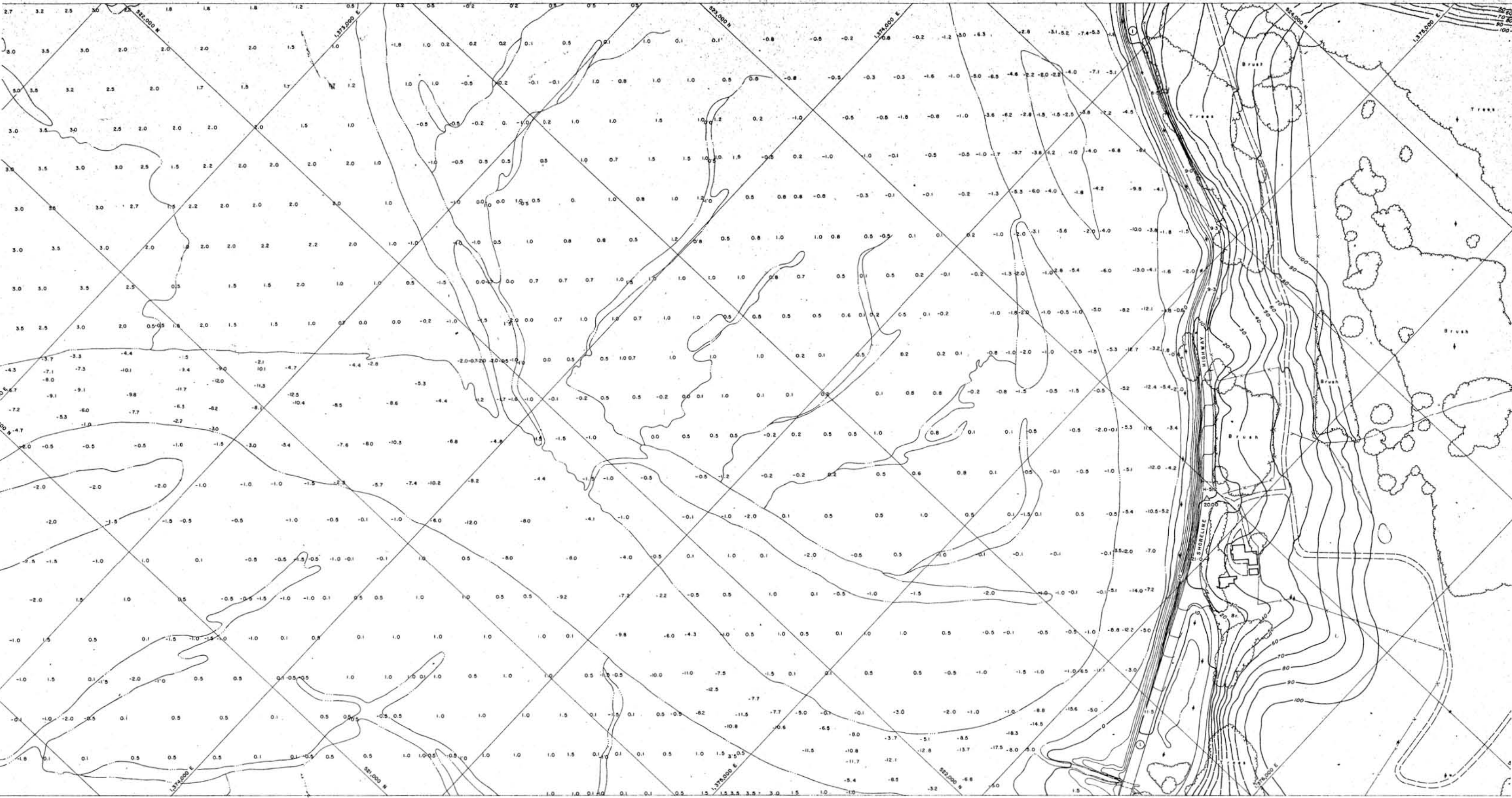


BOLINAS BAY

IN OPEN UNOBSTRUCTED AREAS, THIS MAP COMPLIES WITH NATIONAL STANDARDS FOR MAP ACCURACY.
 IN AREAS OF DENSE VEGETATION WHERE THE GROUND IS OBSCURED FROM VIEW, CONTOURS MAY DEVIATE FROM CORRECT ELEVATION BY ONE HALF THE HEIGHT OF THE COVER.



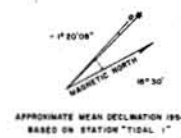
TOPOGRAPHIC MAP OF BOLINAS LAGOON FOR COUNTY OF MARIN & BOLINAS HARBOR		
SCALE 1"=100'	CONTOUR INTERVAL 1'	
T.M. TOWILL CORPORATION 812 HOWARD STREET, SAN FRANCISCO, CALIF.	DATE OF PHOTOGRAPHY MAY 16, 1968	JOB NO. 4-82771-0



LEGEND

	Contour Interval
	Shoreline
	Highway
	Building
	Tree
	Brush
	Spot Height
	Elevation
	Contour Line
	Water
	Road
	Fence
	Utility Line
	Boundary
	Spot Height
	Elevation
	Contour Line
	Water
	Road
	Fence
	Utility Line
	Boundary

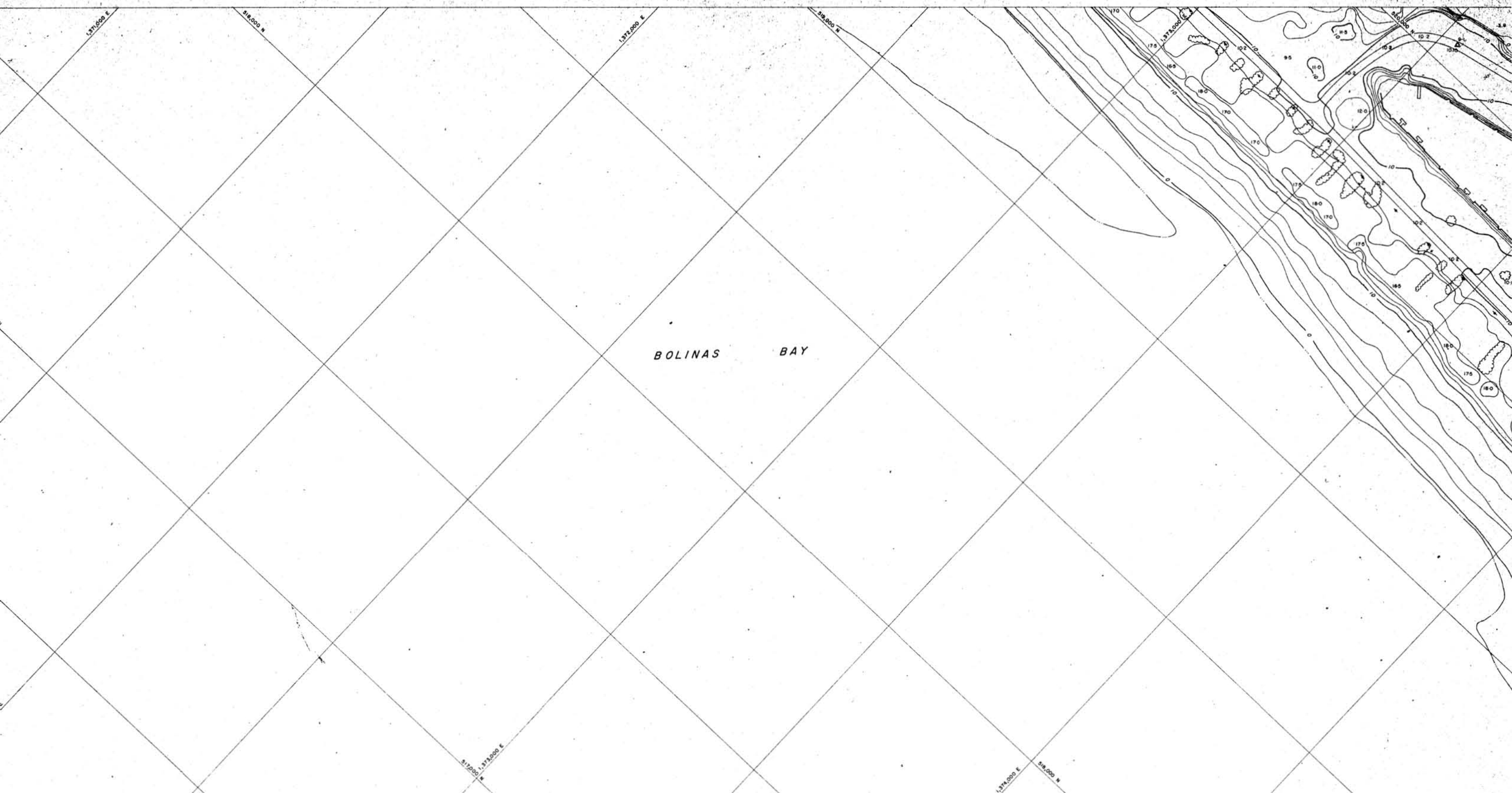
IN OPEN UNOBSTRUCTED AREAS, THIS MAP COMPLIES WITH NATIONAL STANDARDS FOR MAP ACCURACY.
 IN AREAS OF DENSE VEGETATION WHERE THE GROUND IS OBSCURED FROM VIEW, CONTOURS MAY DEVIATE FROM CORRECT ELEVATION BY ONE HALF THE HEIGHT OF THE COVER.



TOPOGRAPHIC MAP OF
BOLINAS LAGOON
 FOR
COUNTY OF MARIN & BOLINAS HARBOUR

SCALE 1"=100' CONTOUR INTERVAL 10'

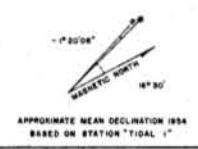
R. M. TOWILL CORPORATION 812 HOWARD STREET, SAN FRANCISCO, CALIF.	DATE OF PHOTOGRAPHY MAY 16, 1968	JOB NO. 4-62771-0
--	-------------------------------------	----------------------



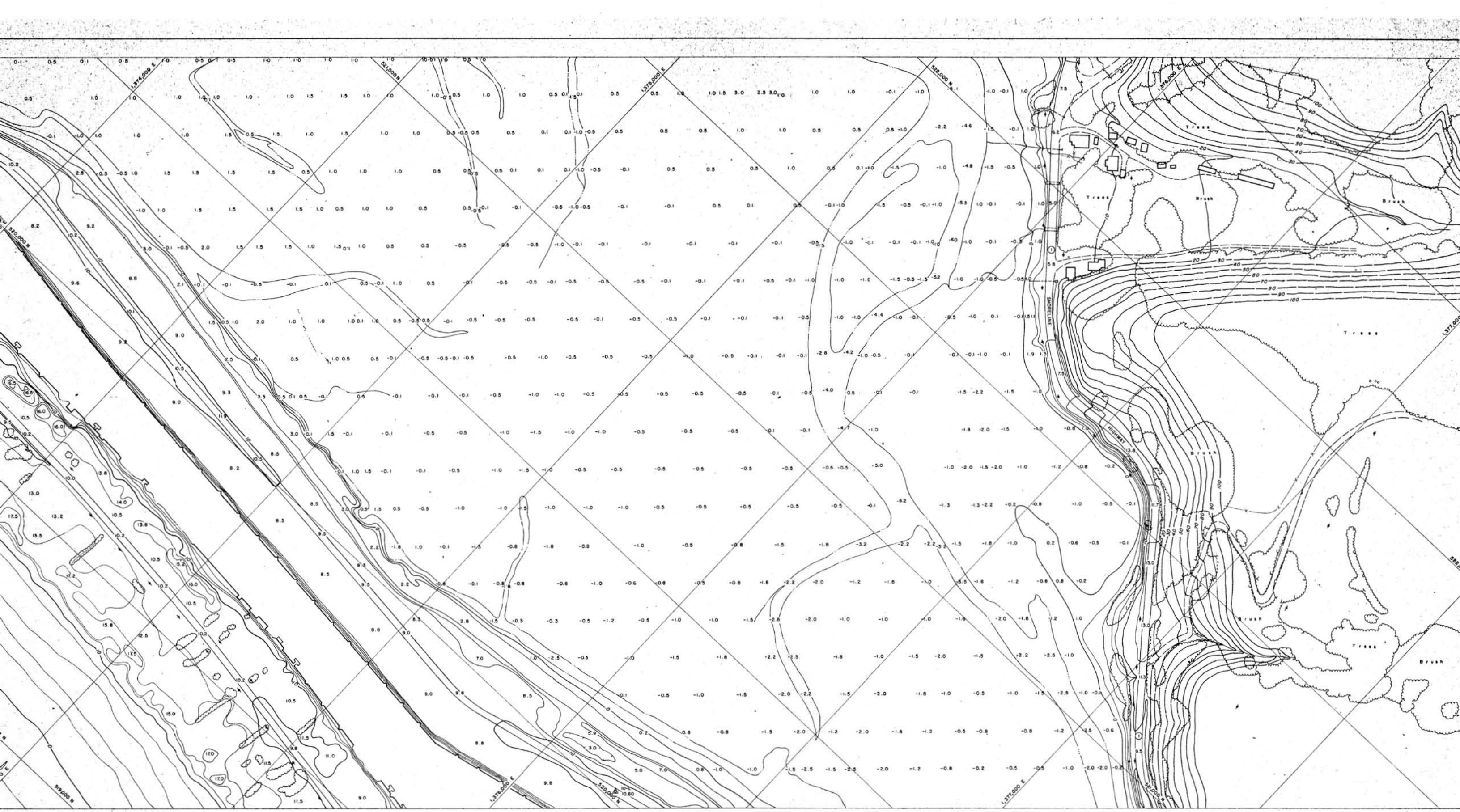
BOLINAS BAY

- 1. Contour Interval 10'
- 2. Spot Elevation
- 3. Bench Mark
- 4. Spot Elevation
- 5. Spot Elevation
- 6. Spot Elevation
- 7. Spot Elevation
- 8. Spot Elevation
- 9. Spot Elevation
- 10. Spot Elevation
- 11. Spot Elevation
- 12. Spot Elevation
- 13. Spot Elevation
- 14. Spot Elevation
- 15. Spot Elevation
- 16. Spot Elevation
- 17. Spot Elevation
- 18. Spot Elevation
- 19. Spot Elevation
- 20. Spot Elevation
- 21. Spot Elevation
- 22. Spot Elevation
- 23. Spot Elevation
- 24. Spot Elevation
- 25. Spot Elevation
- 26. Spot Elevation
- 27. Spot Elevation
- 28. Spot Elevation
- 29. Spot Elevation
- 30. Spot Elevation
- 31. Spot Elevation
- 32. Spot Elevation
- 33. Spot Elevation
- 34. Spot Elevation
- 35. Spot Elevation
- 36. Spot Elevation
- 37. Spot Elevation
- 38. Spot Elevation
- 39. Spot Elevation
- 40. Spot Elevation
- 41. Spot Elevation
- 42. Spot Elevation
- 43. Spot Elevation
- 44. Spot Elevation
- 45. Spot Elevation
- 46. Spot Elevation
- 47. Spot Elevation
- 48. Spot Elevation
- 49. Spot Elevation
- 50. Spot Elevation
- 51. Spot Elevation
- 52. Spot Elevation
- 53. Spot Elevation
- 54. Spot Elevation
- 55. Spot Elevation
- 56. Spot Elevation
- 57. Spot Elevation
- 58. Spot Elevation
- 59. Spot Elevation
- 60. Spot Elevation
- 61. Spot Elevation
- 62. Spot Elevation
- 63. Spot Elevation
- 64. Spot Elevation
- 65. Spot Elevation
- 66. Spot Elevation
- 67. Spot Elevation
- 68. Spot Elevation
- 69. Spot Elevation
- 70. Spot Elevation
- 71. Spot Elevation
- 72. Spot Elevation
- 73. Spot Elevation
- 74. Spot Elevation
- 75. Spot Elevation
- 76. Spot Elevation
- 77. Spot Elevation
- 78. Spot Elevation
- 79. Spot Elevation
- 80. Spot Elevation
- 81. Spot Elevation
- 82. Spot Elevation
- 83. Spot Elevation
- 84. Spot Elevation
- 85. Spot Elevation
- 86. Spot Elevation
- 87. Spot Elevation
- 88. Spot Elevation
- 89. Spot Elevation
- 90. Spot Elevation
- 91. Spot Elevation
- 92. Spot Elevation
- 93. Spot Elevation
- 94. Spot Elevation
- 95. Spot Elevation
- 96. Spot Elevation
- 97. Spot Elevation
- 98. Spot Elevation
- 99. Spot Elevation
- 100. Spot Elevation

IN OPEN UNOBSTRUCTED AREAS, THIS MAP COMPLIES WITH NATIONAL STANDARDS FOR MAP ACCURACY.
 IN AREAS OF DENSE VEGETATION WHERE THE GROUND IS OBSCURED FROM VIEW, CONTOURS MAY DEVIATE FROM CORRECT ELEVATION BY ONE HALF THE HEIGHT OF THE COVER.



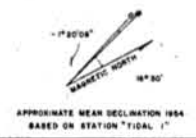
TOPOGRAPHIC MAP OF BOLINAS LAGOON FOR COUNTY OF MARIN & BOLINAS HARBOR		
SCALE 1"=100'	CONTOUR INTERVAL 2'	
R. M. TOWILL CORPORATION 88 HOWARD STREET, SAN FRANCISCO, CALIF.	DATE OF PHOTOGRAPHY MAY 16, 1968	JOB NO. 4-82771-0



LEGEND

	Spot Elevation		Bench Mark
	Contour Interval		Road
	Stream		Railway
	Tree		Bridge
	Brush		Boundary Line
	Coastline		Utility Line

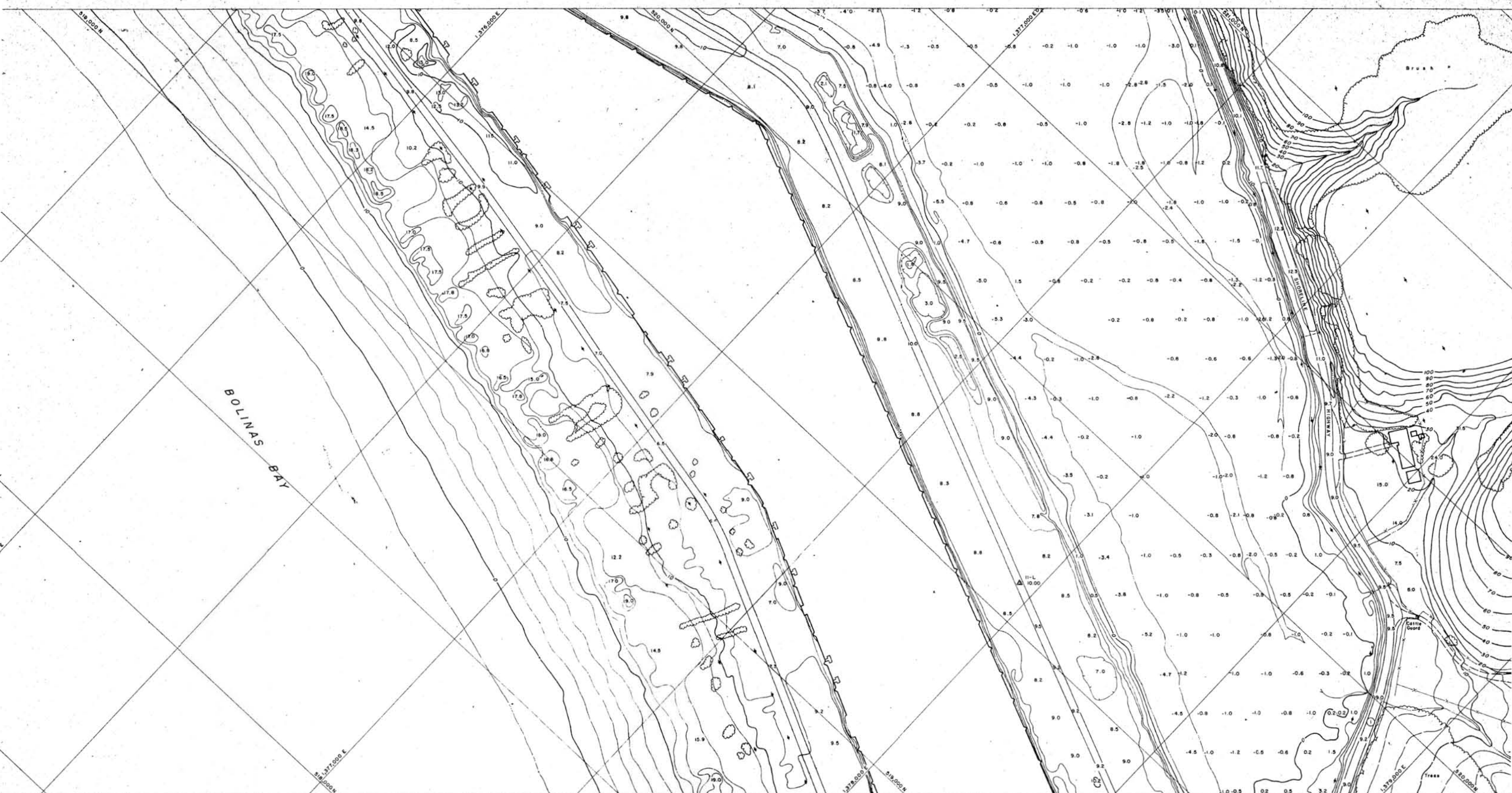
IN OPEN UNOBSTRUCTED AREAS, THIS MAP COMPLIES WITH NATIONAL STANDARDS FOR MAP ACCURACY.
 IN AREAS OF DENSE VEGETATION WHERE THE GROUND IS OBSCURED FROM VIEW, CONTOURS MAY DEVIATE FROM CORRECT ELEVATION BY ONE HALF THE HEIGHT OF THE COVER.



TOPOGRAPHIC MAP OF BOLINAS LAGOON FOR COUNTY OF MARIN & BOLINAS HARBOR DISTRICT

SCALE: 1" = 100' CONTOUR INTERVAL 2'

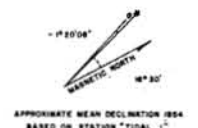
J. M. TOWILL CORPORATION 412 HOWARD STREET, SAN FRANCISCO, CALIF.	DATE OF PHOTOGRAPHY MAY 16, 1988	JOB NO. 4-82771-0	SHEET NO. 15
--	-------------------------------------	----------------------	-----------------



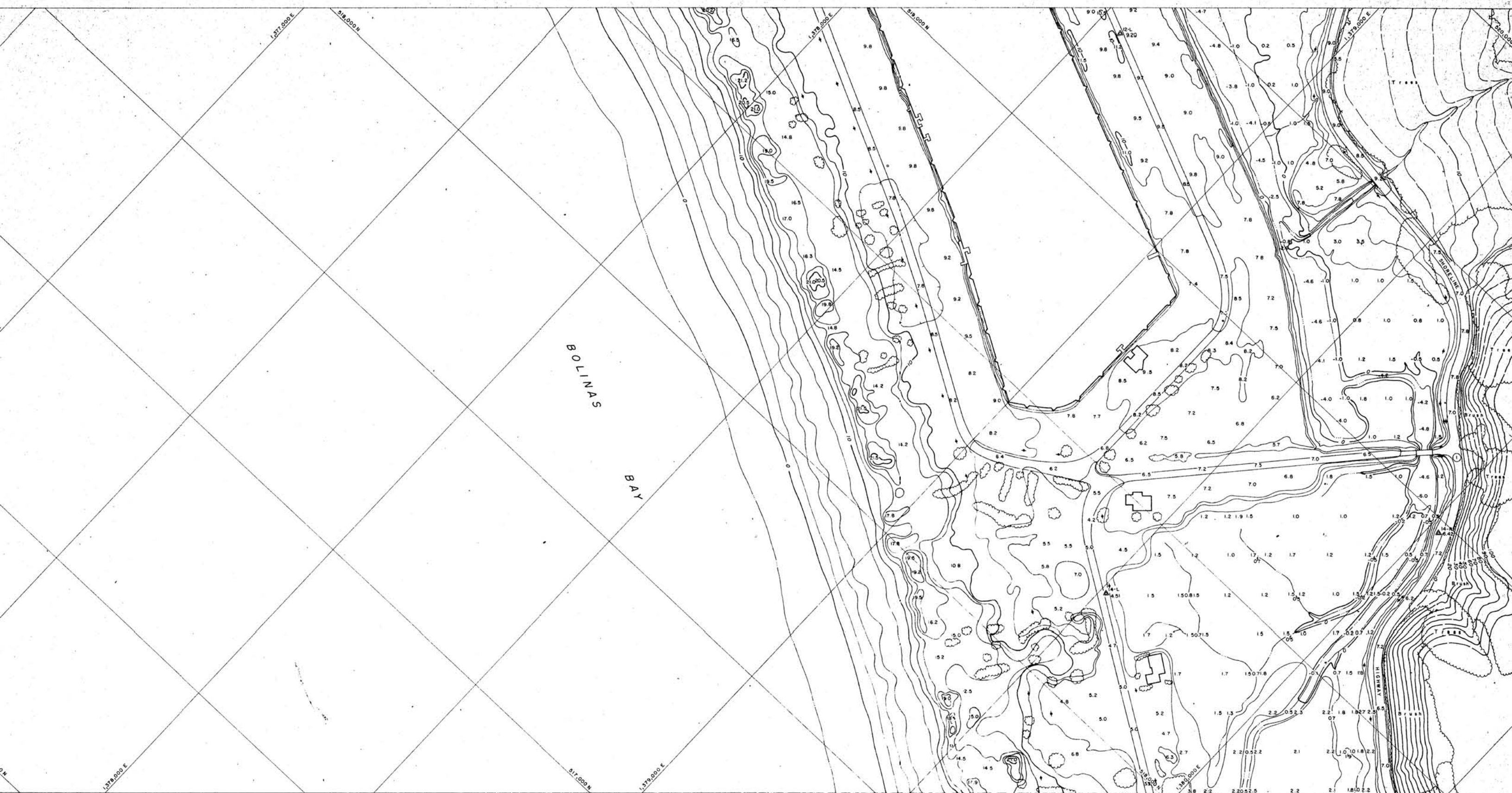
BOLINAS BAY

TOPOGRAPHIC MAP OF
BOLINAS LAGOON
 FOR
COUNTY OF MARIN & BOLINAS HARBOR
 SCALE 1"=100' CONTOUR INTERVAL 2'
 M. M. TOWILL CORPORATION DATE OF PHOTOGRAPHY JOB NO.
 86 HOWARD STREET, SAN FRANCISCO, CALIF. MAY 16, 1968 4-82771-0

IN OPEN UNOBSTRUCTED AREAS, THIS MAP COMPLIES WITH NATIONAL STANDARDS FOR MAP ACCURACY.
 IN AREAS OF DENSE VEGETATION WHERE THE GROUND IS OBSCURED FROM VIEW, CONTOURS MAY DEVIATE FROM CORRECT ELEVATION BY ONE HALF THE HEIGHT OF THE COVER.



- 1. Contour lines
- 2. Spot elevations
- 3. Bench marks
- 4. Elevation contours
- 5. Contour interval
- 6. Contour lines
- 7. Contour lines
- 8. Contour lines
- 9. Contour lines
- 10. Contour lines
- 11. Contour lines
- 12. Contour lines
- 13. Contour lines
- 14. Contour lines
- 15. Contour lines
- 16. Contour lines
- 17. Contour lines
- 18. Contour lines
- 19. Contour lines
- 20. Contour lines
- 21. Contour lines
- 22. Contour lines
- 23. Contour lines
- 24. Contour lines
- 25. Contour lines
- 26. Contour lines
- 27. Contour lines
- 28. Contour lines
- 29. Contour lines
- 30. Contour lines
- 31. Contour lines
- 32. Contour lines
- 33. Contour lines
- 34. Contour lines
- 35. Contour lines
- 36. Contour lines
- 37. Contour lines
- 38. Contour lines
- 39. Contour lines
- 40. Contour lines
- 41. Contour lines
- 42. Contour lines
- 43. Contour lines
- 44. Contour lines
- 45. Contour lines
- 46. Contour lines
- 47. Contour lines
- 48. Contour lines
- 49. Contour lines
- 50. Contour lines
- 51. Contour lines
- 52. Contour lines
- 53. Contour lines
- 54. Contour lines
- 55. Contour lines
- 56. Contour lines
- 57. Contour lines
- 58. Contour lines
- 59. Contour lines
- 60. Contour lines
- 61. Contour lines
- 62. Contour lines
- 63. Contour lines
- 64. Contour lines
- 65. Contour lines
- 66. Contour lines
- 67. Contour lines
- 68. Contour lines
- 69. Contour lines
- 70. Contour lines
- 71. Contour lines
- 72. Contour lines
- 73. Contour lines
- 74. Contour lines
- 75. Contour lines
- 76. Contour lines
- 77. Contour lines
- 78. Contour lines
- 79. Contour lines
- 80. Contour lines
- 81. Contour lines
- 82. Contour lines
- 83. Contour lines
- 84. Contour lines
- 85. Contour lines
- 86. Contour lines
- 87. Contour lines
- 88. Contour lines
- 89. Contour lines
- 90. Contour lines
- 91. Contour lines
- 92. Contour lines
- 93. Contour lines
- 94. Contour lines
- 95. Contour lines
- 96. Contour lines
- 97. Contour lines
- 98. Contour lines
- 99. Contour lines
- 100. Contour lines

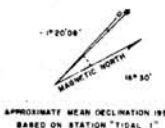


BOLINAS
BAY

LYNDEN LAGOON

1	2	3	4	5	6	7	8	9	10	11	12	13	14	15	16	17	18	19	20	21	22	23	24	25	26	27	28	29	30	31	32	33	34	35	36	37	38	39	40	41	42	43	44	45	46	47	48	49	50	51	52	53	54	55	56	57	58	59	60	61	62	63	64	65	66	67	68	69	70	71	72	73	74	75	76	77	78	79	80	81	82	83	84	85	86	87	88	89	90	91	92	93	94	95	96	97	98	99	100
---	---	---	---	---	---	---	---	---	----	----	----	----	----	----	----	----	----	----	----	----	----	----	----	----	----	----	----	----	----	----	----	----	----	----	----	----	----	----	----	----	----	----	----	----	----	----	----	----	----	----	----	----	----	----	----	----	----	----	----	----	----	----	----	----	----	----	----	----	----	----	----	----	----	----	----	----	----	----	----	----	----	----	----	----	----	----	----	----	----	----	----	----	----	----	----	----	----	----	-----

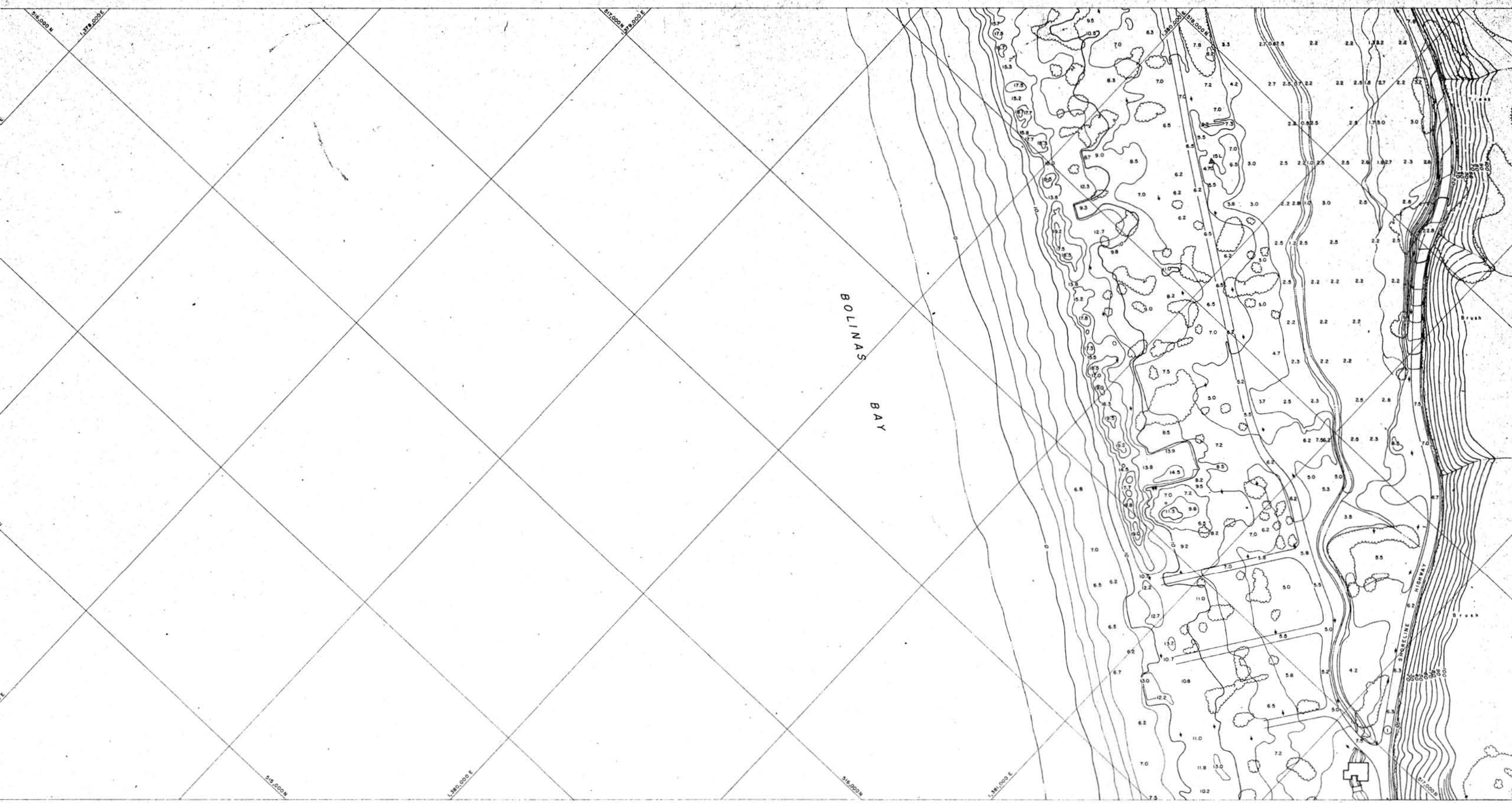
IN OPEN UNOBSTRUCTED AREAS, THIS MAP COMPLIES WITH NATIONAL STANDARDS FOR MAP ACCURACY.
IN AREAS OF DENSE VEGETATION WHERE THE GROUND IS OBSCURED FROM VIEW, CONTOURS MAY DEVIATE FROM CORRECT ELEVATION BY ONE HALF THE HEIGHT OF THE COVER.



TOPOGRAPHIC MAP OF
BOLINAS LAGOON
FOR
COUNTY OF MARIN & BOLINAS HARBOR

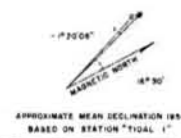
SCALE 1"=100' CONTOUR INTERVAL 2.0'

R. M. TOWILL CORPORATION DATE OF PHOTOGRAPHY JOB NO. SHEET NO.
612 HOWARD STREET, SAN FRANCISCO, CALIF. MAY 16, 1968 4-82771-0 1



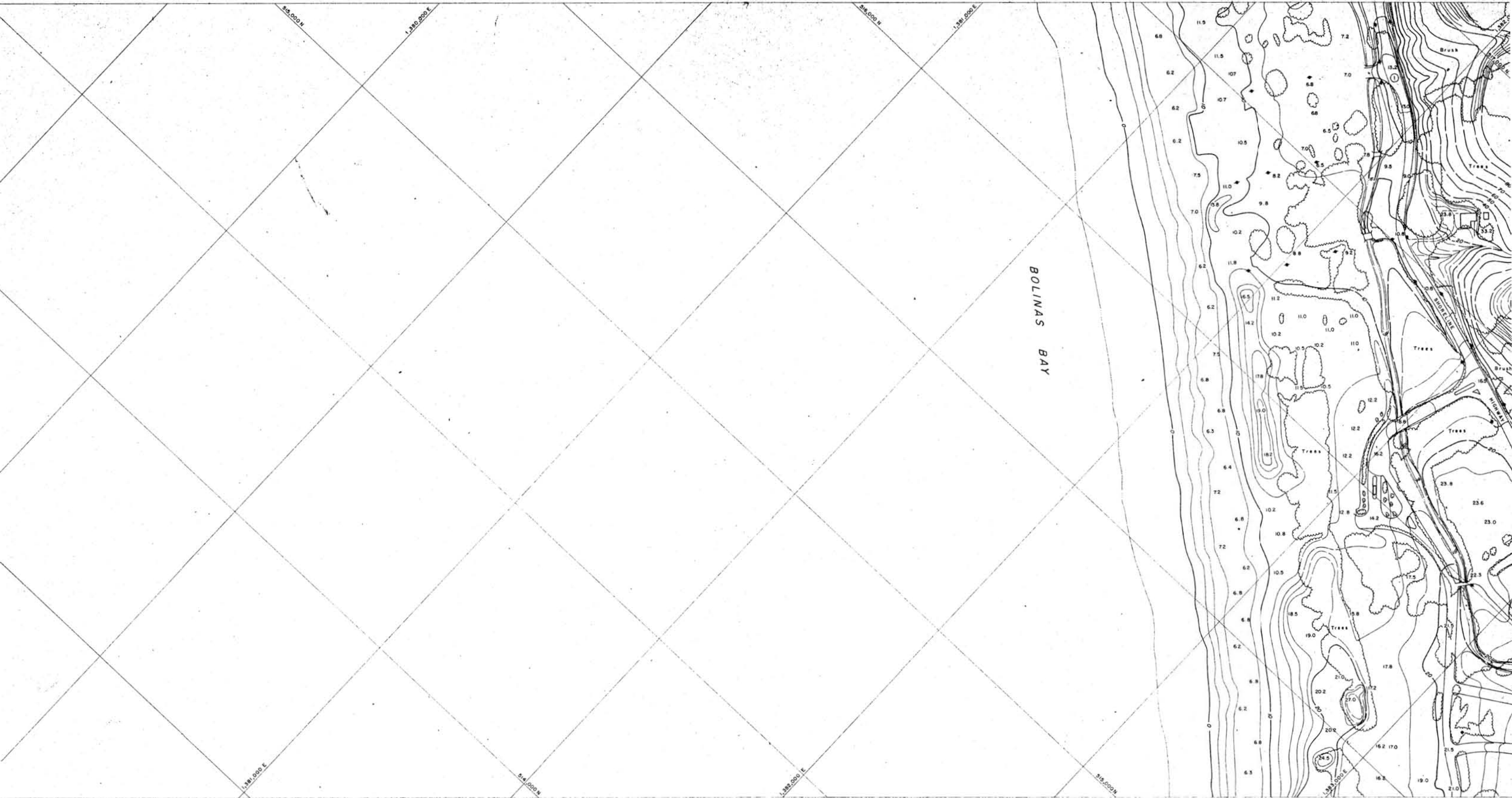
	Spot Elevation
	Benchmark
	Spot Height
	Spot Height with Error
	Spot Height with Error and Date
	Spot Height with Error and Date and Name
	Spot Height with Error and Date and Name and Elevation
	Spot Height with Error and Date and Name and Elevation and Description
	Spot Height with Error and Date and Name and Elevation and Description and Date
	Spot Height with Error and Date and Name and Elevation and Description and Date and Name
	Spot Height with Error and Date and Name and Elevation and Description and Date and Name and Description

IN OPEN UNOBSTRUCTED AREAS, THIS MAP COMPLIES WITH NATIONAL STANDARDS FOR MAP ACCURACY.
 IN AREAS OF DENSE VEGETATION WHERE THE GROUND IS OBSCURED FROM VIEW, CONTOURS MAY DEVIATE FROM CORRECT ELEVATION BY ONE HALF THE HEIGHT OF THE COVER.



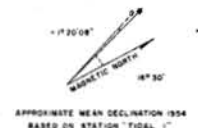
APPROXIMATE MEAN DECLINATION 1984
 BASED ON STATION "TIDAL 1"

TOPOGRAPHIC MAP OF
BOLINAS LAGOON
 FOR
COUNTY OF MARIN & BOLINAS HARBOUR
 SCALE 1"=100' CONTOUR INTERVAL 2.0'
 R. M. TOWELL CORPORATION DATE OF PHOTOGRAPHY JOB NO.
 816 HOWARD STREET, SAN FRANCISCO, CALIF. MAY 16, 1968 4-82771-0



Symbol	Description
[Symbol]	Contour Interval
[Symbol]	Spot Elevation
[Symbol]	Water
[Symbol]	Shoreline
[Symbol]	Vegetation
[Symbol]	Buildings
[Symbol]	Highways
[Symbol]	Railroads
[Symbol]	Power Lines
[Symbol]	Telephone Lines
[Symbol]	Boundaries
[Symbol]	Spot Elevation

IN OPEN UNOBSTRUCTED AREAS, THIS MAP COMPLIES WITH NATIONAL STANDARDS FOR MAP ACCURACY.
 IN AREAS OF DENSE VEGETATION WHERE THE GROUND IS OBSCURED FROM VIEW, CONTOURS MAY DEVIATE FROM CORRECT ELEVATION BY ONE HALF THE HEIGHT OF THE COVER.



TOPOGRAPHIC MAP OF
BOLINAS LAGOON
 FOR
 COUNTY OF MARIN & BOLINAS HARBOR

SCALE 1" = 100'	CONTOUR INTERVAL	
R. M. TOWILL CORPORATION 812 HOWARD STREET, SAN FRANCISCO, CALIF.	DATE OF PHOTOGRAPHY MAY 16, 1968	JOB NO. 4-62771-0

COP