



Mill Valley/Sausalito Multiuse Path Maintenance Project

23 September 2021

PREVIOUSLY COMPLETED PATH PROJECTS



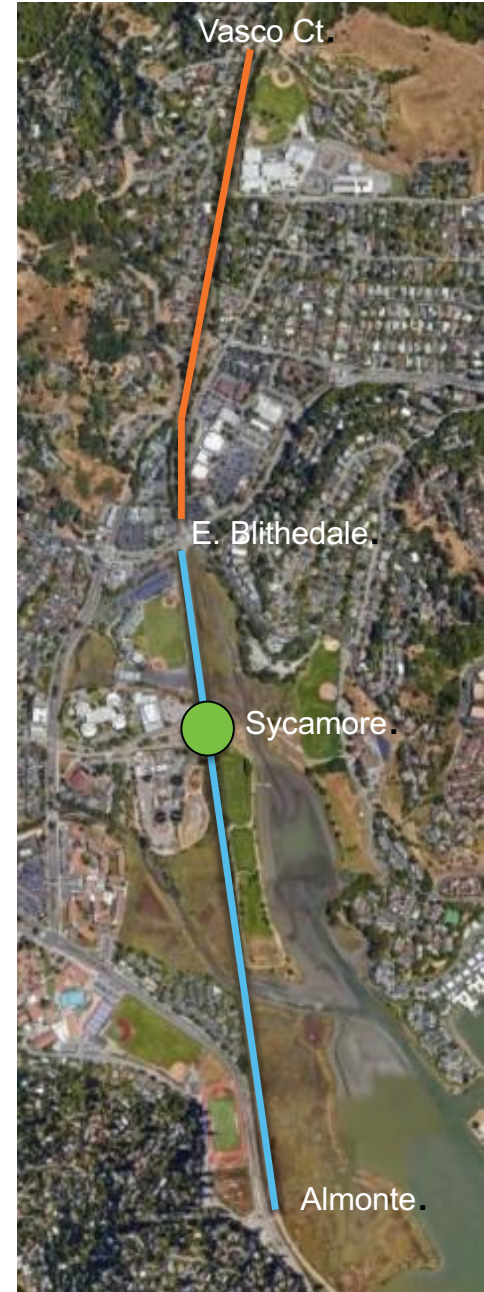
- 2018 – E. Blithedale to Vasco Court



- 2015 - Sycamore Roundabout



- 2017 – E. Blithedale to Almonte Blvd.



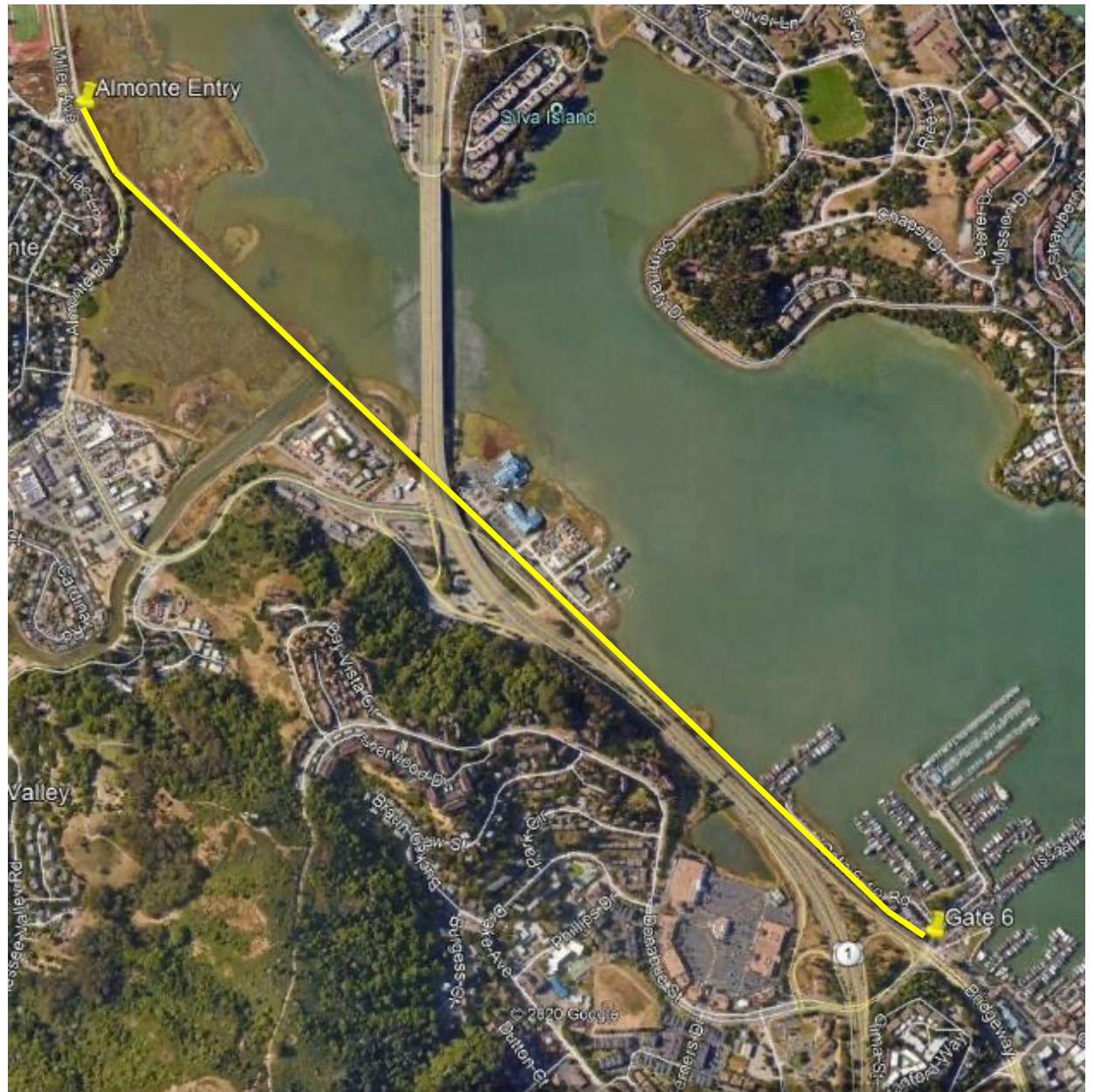
PROJECT BACKGROUND

- Class 1 multi-use pathway.
- Most heavily used recreation facility.
- 2,500 users daily average with over 5,000 on busiest days.
- Important non-motorized commuter link.
- Safe Route to School servicing several nearby schools.



PROJECT SCOPE

- The 1.4 mile south portion of path (Almonte to Gate 6) has not been repaved since 1981.



PROJECT SCOPE and STATUS

- Resurface path from Almonte Blvd. to Gate 6 Road
- Maintain existing alignment and width (10')
- Addresses short-term maintenance issues.
- Approximate 3-week construction period



PROJECT SCOPE : PAVEMENT ISSUES

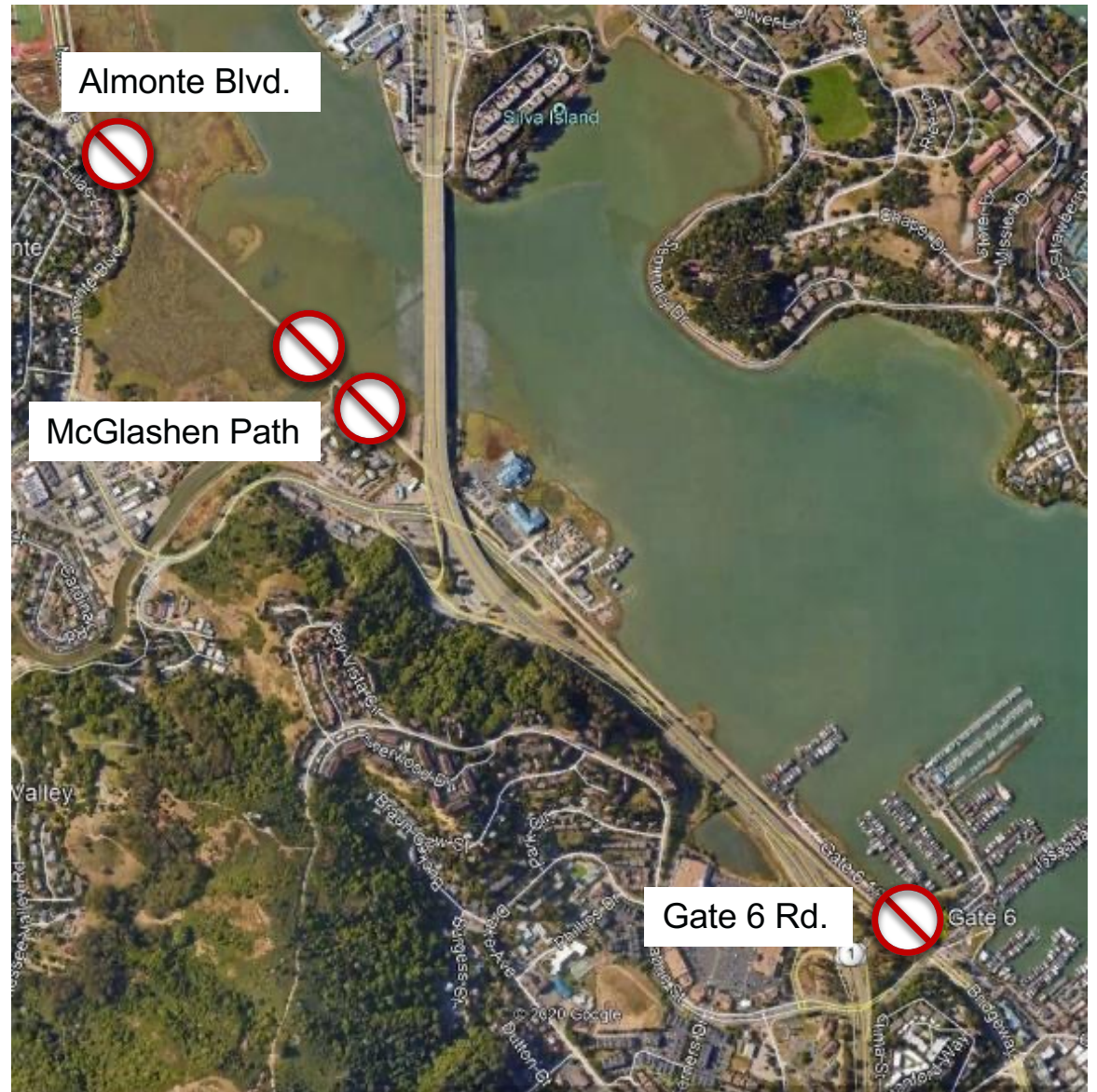


PROJECT SCOPE : MICROSURFACING



PROJECT IMPLEMENTATION AND CLOSURE

- Pathway sections will be closed during implementation
- Dependent upon tides and weather.
- Closures short.
- Approximately 24 to 48 hours per section.
- **Project start:**
October



PROJECT IMPLEMENTATION AND CLOSURE



PROJECT IMPLEMENTATION AND CLOSURE

- McGlashen will remain open during closures.



CLOSURE NOTIFICATIONS

- **How much advance notice?**
 - As soon as we are able. Weather and tide dependent.
- **How will we communicate the exact closure dates?**
 - Marin County Parks social media: Facebook, Instagram, Twitter
 - Next Door, Marin Connect
 - Area partners, including: Safe Routes to Schools, Marin County Bicycle Coalition, CalTrans
 - Direct communications with schools
 - Updated pathway signage



CLOSURE NOTIFICATIONS



CLOSURE NOTIFICATIONS



MILL VALLEY – SAUSALITO MUP

Questions?

MARIN COUNTY
PARKS
PRESERVATION • RECREATION



Thank you